

← TO LOHARU TO ROHTAK →

Curve No.	Transition In			Circular Arc				Transition Out			Limiting Speed	HIP Coordinates		Deflection Angle	Es	Lc	e(%)
	Start	End	Length	Start	End	Radius	Hand	Start	End	Length		Northing	Easting				
1				125017.6	125017.9	2000	Left				100	3181409	608630.444	00°00'36.55"	0	0.354	N/A
2				125314.2	125315.5	2000	Right				100	3181410	608927.515	00°02'22.22"	0	1.379	N/A
3				125579.2	125581.4	2000	Left				100	3181411	609192.957	00°03'41.38"	0	2.147	N/A
4				125748.9	125929.1	1550	Right				80	3181412	609451.761	06°39'49.14"	2.624	180.269	2.5
5				125954.3	125983.3	2000	Left				100	3181397	609580.824	00°49'47.06"	0.052	28.963	N/A
6	126130.6	126190.6	60	126190.6	126213.6	360	Left	126213.6	126273.6	60	80	3181374	609813.216	13°12'27.31"	2.824	22.986	7
7				126397.3	126435.6	5000	Left				100	3181402	610025.955	00°26'21.68"	0.037	38.341	N/A
8				126470.6	126557.5	1550	Left				80	3181416	610122.593	03°12'45.07"	0.609	86.907	2.5
10				126757.7	127041.6	1200	Right				80	3181483	610502.912	13°33'31.16"	8.449	283.972	2.5
11				127303.8	127316.9	5000	Left				100	3181449	610912.888	00°08'58.36"	0.004	13.05	N/A
12				127502.9	127524.5	5000	Left				100	3181432	611115.571	00°14'53.37"	0.012	21.656	N/A
13	127635.9	127695.9	60	127695.9	127702.4	360	Left	127702.4	127762.4	60	80	3181418	611300.641	10°34'49.14"	1.958	6.478	7

23-01-24	RO	S.M		
DATE	REV	BY		

CLIENT:



Ministry of Road Transport & Highways



Public Works Department(NH)
DIV. BHIWANI
Haryana

DESIGN CONSULTANT:



Design Line Consultancy Services Pvt. Ltd.
DSS- 71, HUDA Complex,
Sector- 15A, Hisar
(Haryana)-125001

APPROVED BY:	A.K	
CHECKED BY:	A.D	
DESIGNED BY:	S.M	
DRAWN BY:	S.K	
SCALE:	1:2	
DATE:	JAN - 2024	

PROJECT:

CONSTRUCTION OF 6 LANE FLYOVER AT HALUWAS CHOWK AT KM. 126+270 OF BHIWANI BYPASS ON NH-108B ON EPC BASIS IN THE STATE OF HARYANA.

TITLE: PLAN & PROFILE

DRG NO.: PWD/DLCSPL/BHIWANI/P&P/001

REV: R0


← TO LOHARU

TO ROHTAK →

Details of PVI		Grade		Length of	Type of	K Value	Curve Section		Levels		Road Level
Section	Level	In	Out	Curve	Curve		Start	End	Start	End	At PVI
125030	254.36	-0.26	0.12	60	Vally	154.5	125000	125060	254.443	254.401	254.393
125280	254.67	0.12	-0.25	60	Summit	160.5	125250	125310	254.636	254.598	254.645
125505	254.11	-0.25	-0.23	60	Vally	3720.7	125475	125535	254.185	254.04	254.111
125714.7	253.62	-0.23	2.5	120.3	Vally	44	125654.6	125774.9	253.76	255.123	254.03
126270	267.5	2.50	-1.53	394	Summit	97.7	126073	126467	262.575	264.479	265.514
126925	257.46	-1.53	-1.13	60	Vally	148.5	126895	126955	257.916	257.117	257.486
127200	254.35	-1.13	-0.14	60	Vally	60.5	127170	127230	254.689	254.308	254.424
127385	254.09	-0.14	-0.53	60	Summit	152.3	127355	127415	254.136	253.934	254.064


23-01-24	RO	S.M	FOR APPROVAL	
DATE	REV	BY	DESCRIPTION OF REVISIONS	

CLIENT:




Ministry of
Road
Transport &
Highways

CLIENT:



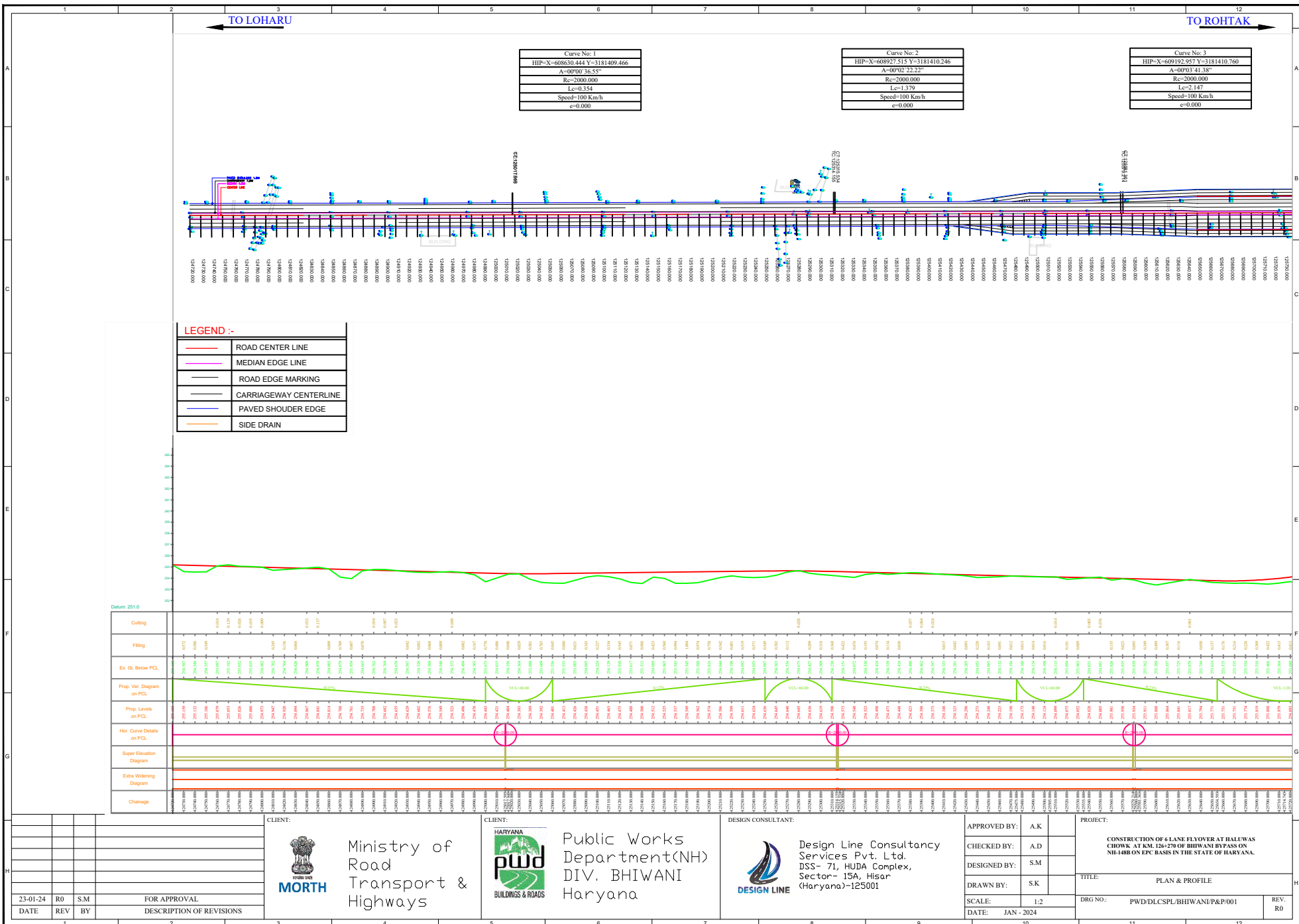
Public Works
Department(NH)
DIV. BHIWANI
Haryana

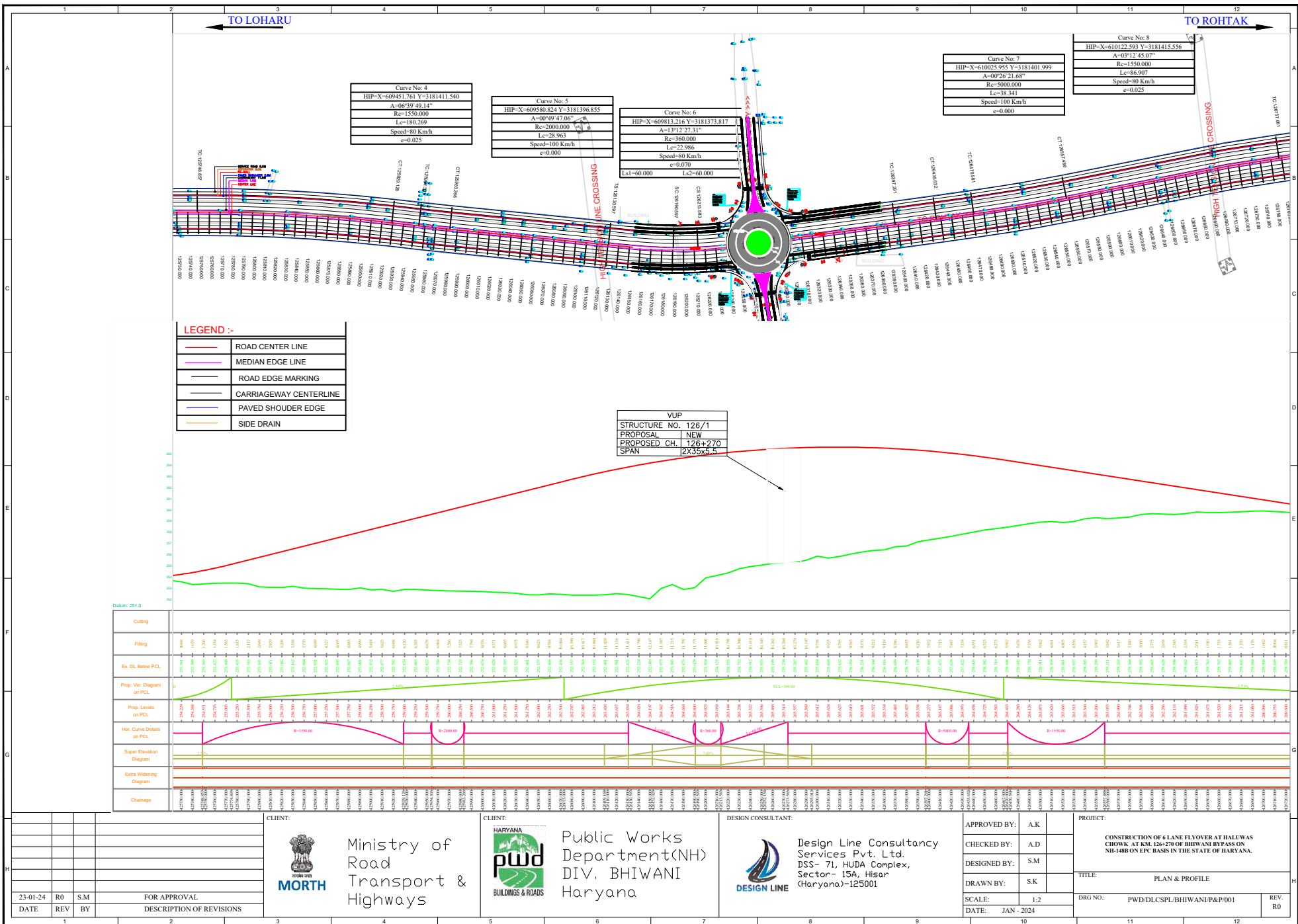
DESIGN CONSULTANT:

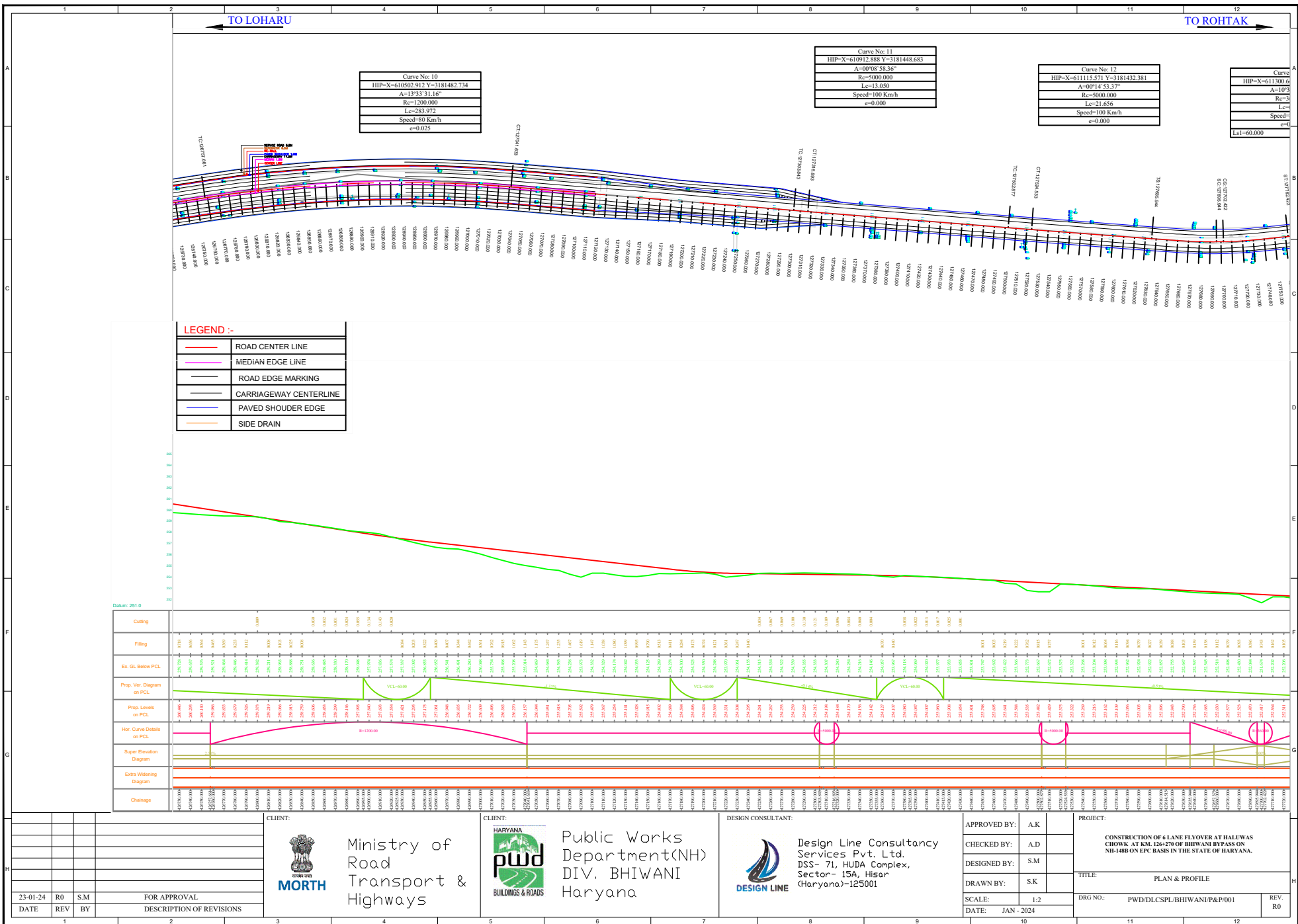


Design Line Consultancy
Services Pvt. Ltd.
DSS- 71, HUDA Complex,
Sector- 15A, Hisar
(Haryana)-125001

APPROVED BY:	A.K		PROJECT: CONSTRUCTION OF 6 LANE FLYOVER AT HALUWAS CHOWK AT KM. 126-127 OF BHIWANI BYPASS ON NH-148B ON EPC BASIS IN THE STATE OF HARYANA.
CHECKED BY:	A.D		
DESIGNED BY:	S.M		
DRAWN BY:	S.K		
SCALE:	1:2		TITLE: PLAN & PROFILE
DATE:	JAN - 2024		DRG NO.: PWD/DLCSPL/BHIWANI/P&P/001
			REV: R0

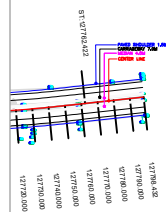










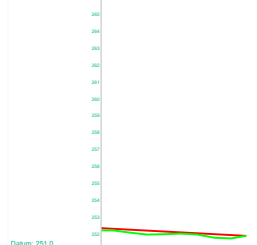




Curve No: 13
HIP=X=611300.641 Y=3181418.303
A=10°34'49.14"
Rc=360.000
Lc=6.478
Speed=80 Km/h
e=0.070
l=60.000 Ls2=60.000



LEGEND :-	
	ROAD CENTER LINE
	MEDIAN EDGE LINE
	ROAD EDGE MARKING
	CARRIAGEWAY CENTERLINE
	PAVED SHOULDER EDGE
	SIDE DRAIN



Station: 251.0		
Cutting		
Filling		
Ex. GL Below PCL		
Prop. Ver. Diagram on PCL		
Prop. Levels on PCL		
Hor. Curve Details on PCL		
Super Elevation Diagram		
Extra Widening Diagram		
Chainage		

[illegible]

Ministry of
Road
Transport &
Highways



Public Works
Department(NH)
DIV. BHIWANI
Haryana



Design Line Consultancy
Services Pvt. Ltd.
DSS- 71, HUDA Complex,
Sector- 15A, Hisar
(Haryana)-125001

APPROVED BY:	A.K	
CHECKED BY:	A.D	
DESIGNED BY:	S.M	
DRAWN BY:	S.K	
SCALE:	1:2	
DATE:	JAN - 2024	

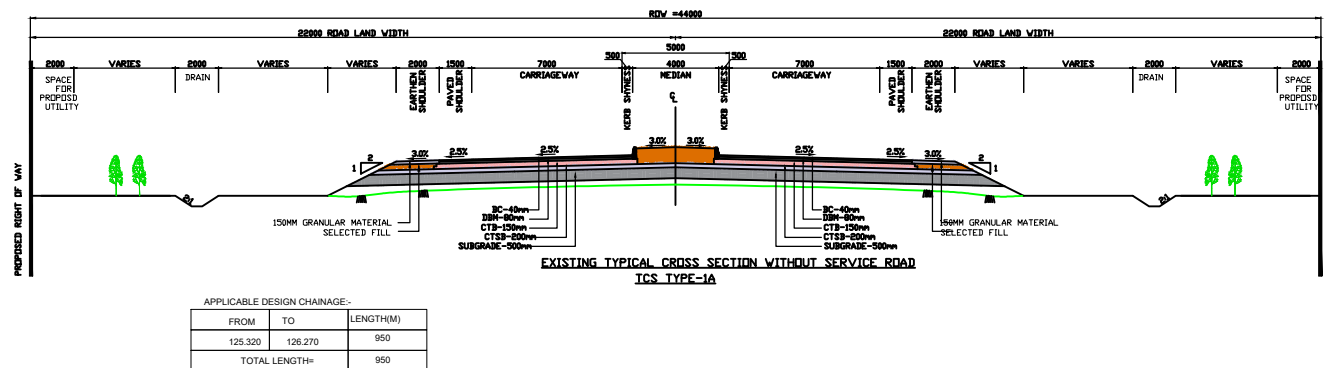
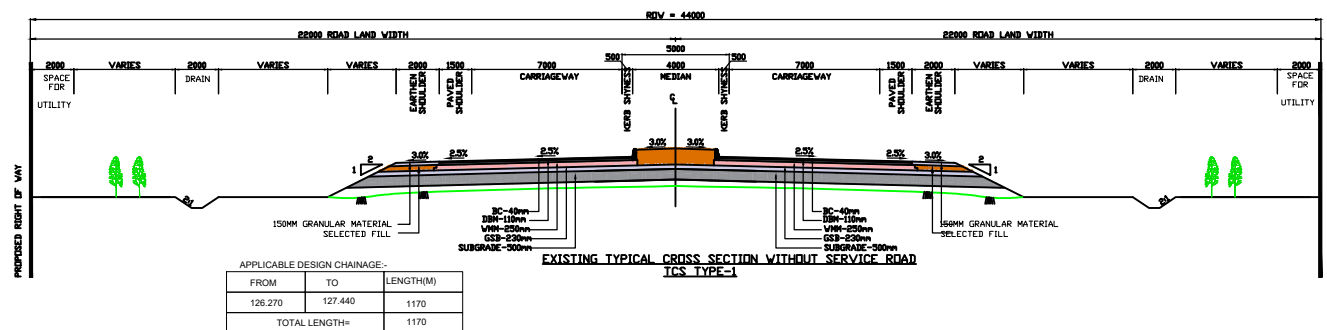
PROJECT:

CONSTRUCTION OF 6 LANE FLYOVER AT HALUWAS CHOWK AT KM. 126+270 OF BHIWANI BYPASS ON NH-148B ON EPC BASIS IN THE STATE OF HARYANA.

TITLE:	PLAN & PROFILE
--------	----------------

DRG NO.:	PWD/DLCSPL/BHIWANI/P&P/001
----------	----------------------------

REV.
R0



23-01-24	R0	S.M	FOR APPROVAL	
DATE	REV	BY	DESCRIPTION OF REVISIONS	

CLIENT:



Ministry of
Road
Transport &
Highways

CLIENT:



Public Works
Department(NH)
DIV. BHIWANI
Haryana

DESIGN CONSULTANT:



Design Line Consultancy
Services Pvt. Ltd.
DSS- 71, HUDA Complex,
Sector- 15A, Hisar
(Haryana)-125001

APPROVED BY:	A.K	
CHECKED BY:	A.D	
DESIGNED BY:	S.M	
DRAWN BY:	S.K	
SCALE:	1:2	
DATE:	JAN - 2024	

PROJECT:

CONSTRUCTION OF 6 LANE FLYOVER AT HALUWAS
CHOWK AT K.M. 126+270 OF BHIWANI BYPASS ON
NH-148B ON EPC BASIS IN THE STATE OF HARYANA.

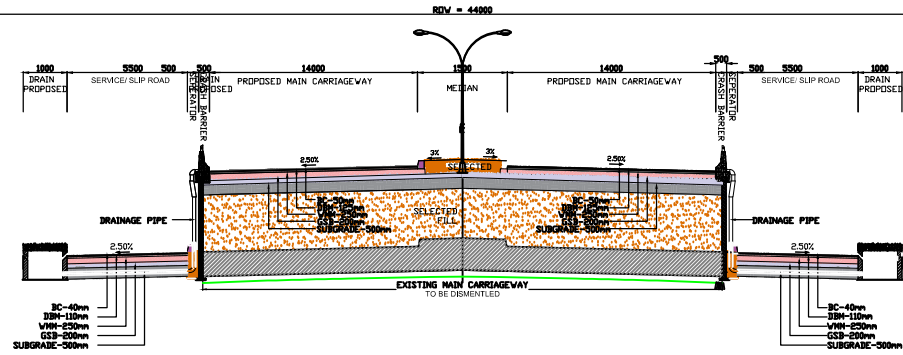
TITLE:	PLAN & PROFILE
--------	----------------

DRG NO.:	PWD/DLCSPL/BHIWANI/P&P/001
----------	----------------------------

REV.
R0

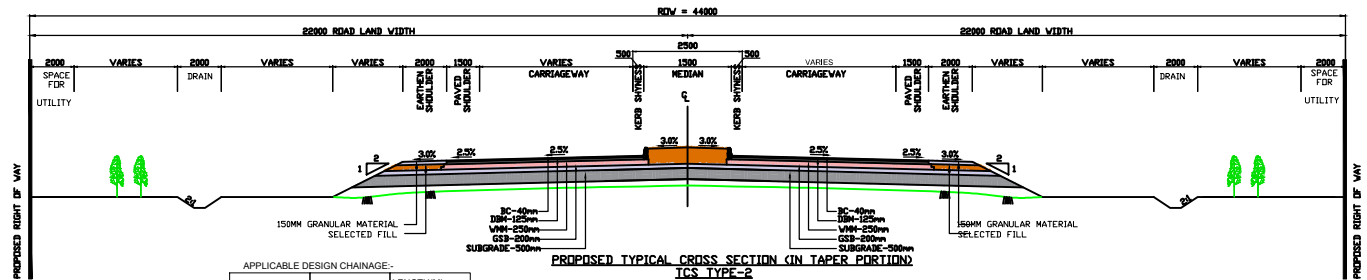
← TO LOHARU

→ TO ROHTAK



**PROPOSED TYPICAL CROSS SECTION FOR APPROACHES BOTH SIDE SERVICE ROAD
ICS TYPE-1A**

APPLICABLE DESIGN CHAINAGE:-		
FROM	TO	LENGTH(M)
125.650	127.130	1480
TOTAL LENGTH=		1480




**PROPOSED TYPICAL CROSS SECTION IN TAPER PORTION
ICS TYPE-2**

APPLICABLE DESIGN CHAINAGE:-		
FROM	TO	LENGTH(M)
125.420	125.650	230
127.130	127.340	210
TOTAL LENGTH=		440

DATE	REV	BY	FOR APPROVAL	DESCRIPTION OF REVISIONS
23-01-24	R0	S.M		

CLIENT:



Ministry of
Road
Transport &
Highways

CLIENT:



Public Works
Department(NH)
DIV. BHIWANI
Haryana

DESIGN CONSULTANT:



Design Line Consultancy
Services Pvt. Ltd.
DSS- 71, HUDA Complex,
Sector- 15A, Hisar
(Haryana)-125001

APPROVED BY:	A.K
CHECKED BY:	A.D
DESIGNED BY:	S.M
DRAWN BY:	S.K
SCALE:	1:2
DATE:	JAN - 2024

PROJECT:	
CONSTRUCTION OF 6 LANE FLYOVER AT HALUWAS CHOWK AT KM. 126-127 OF BHIWANI BYPASS ON NH-148B ON EPC BASIS IN THE STATE OF HARYANA.	
TITLE: PLAN & PROFILE	
DRG NO:	PWD/DLCSPL/BHIWANI/P&P/001
REV:	R0

