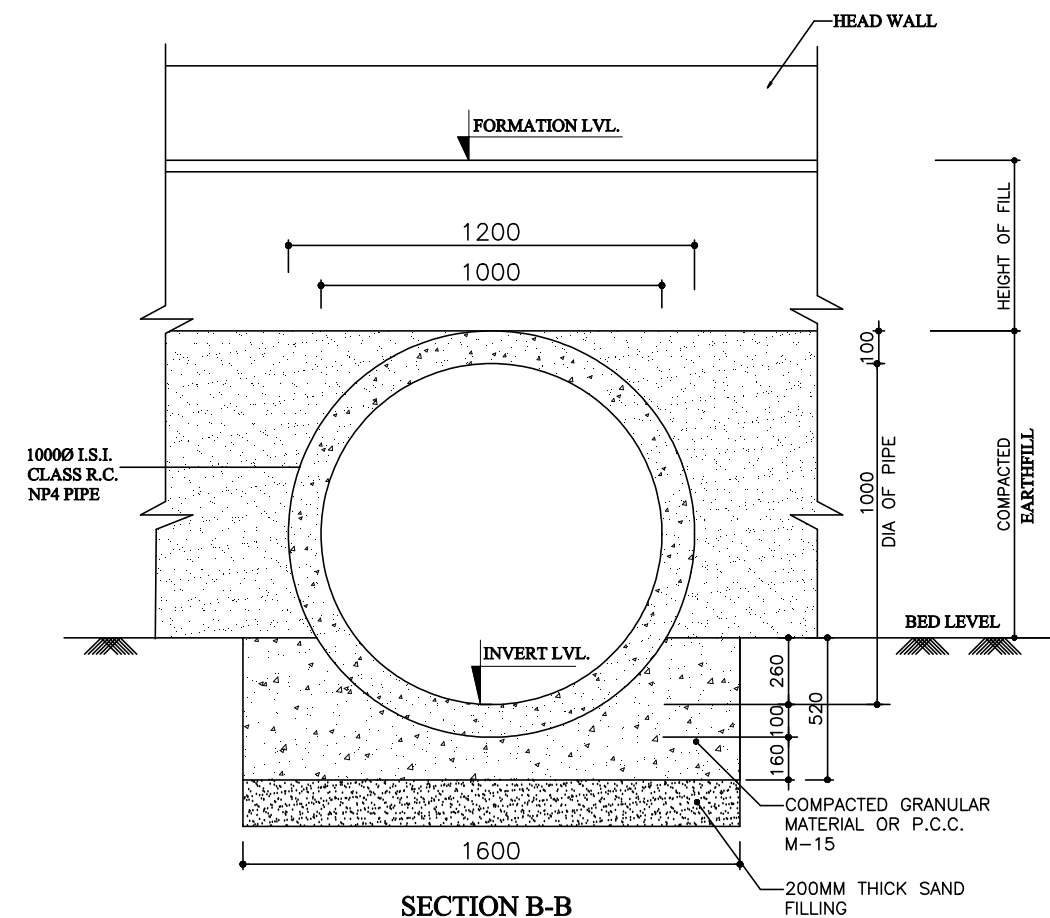
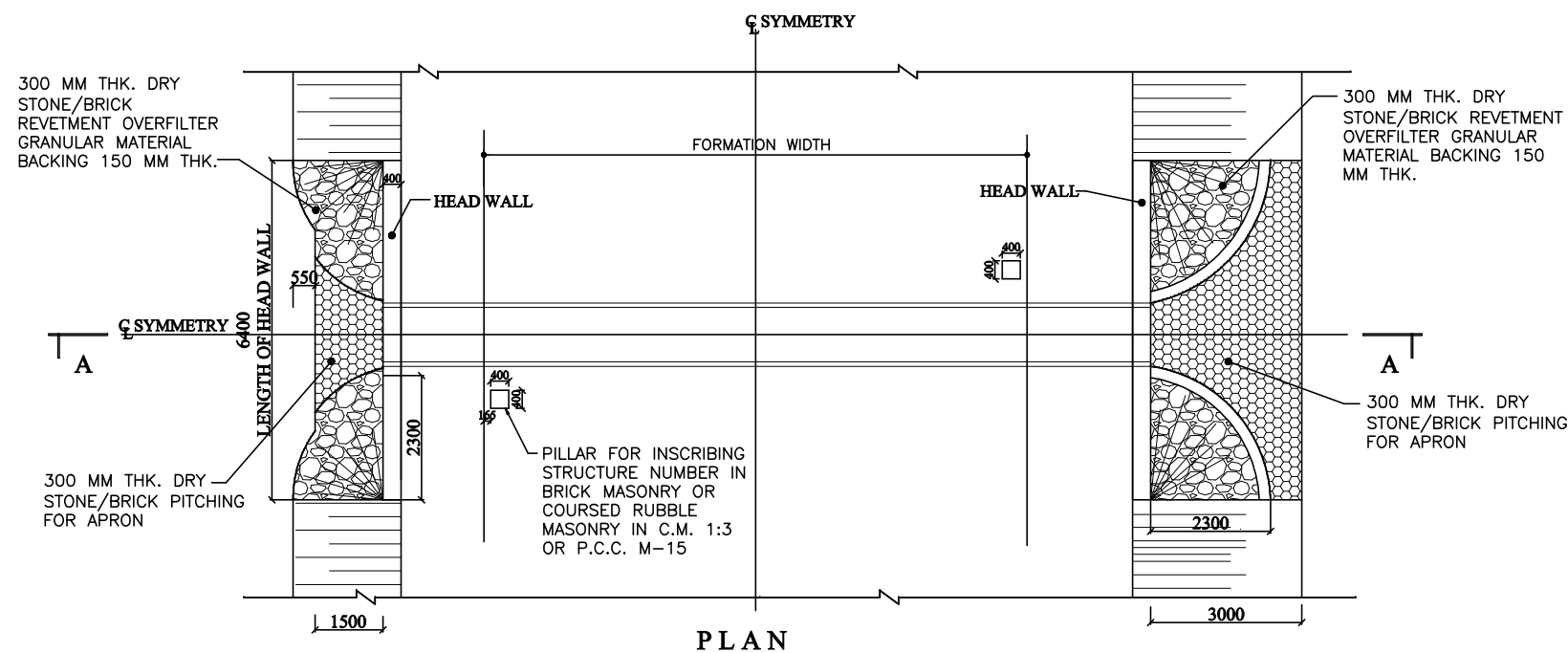


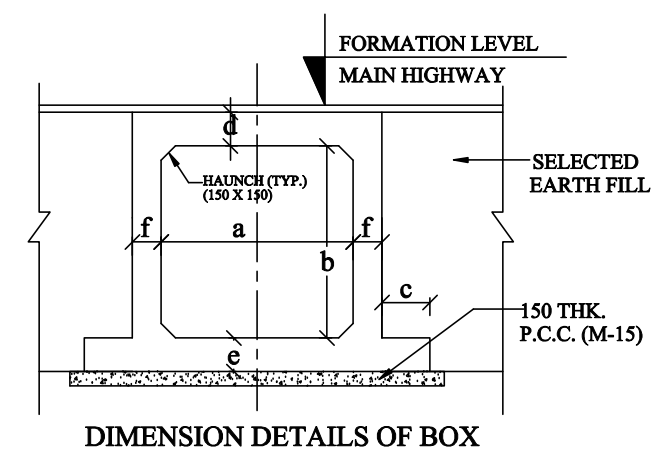
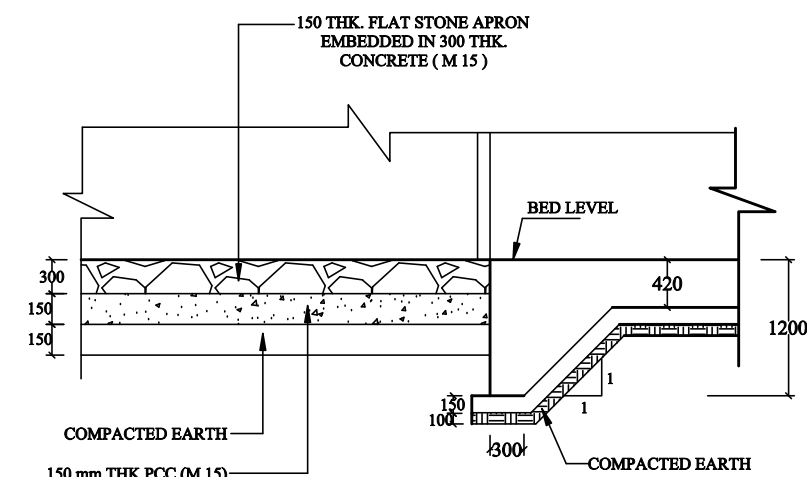
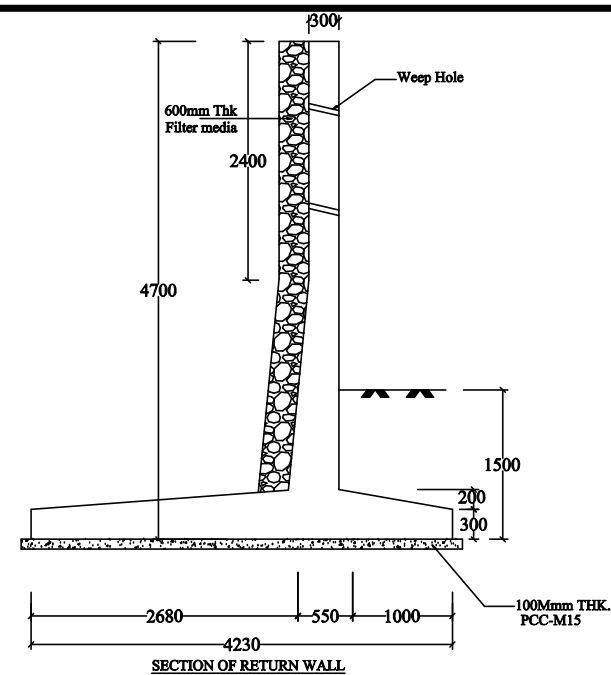
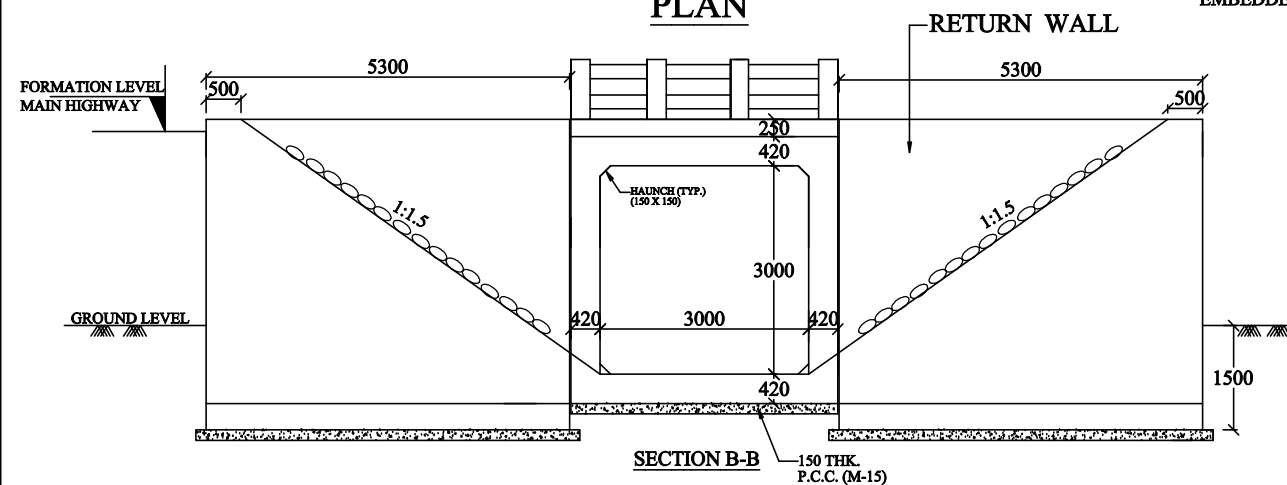
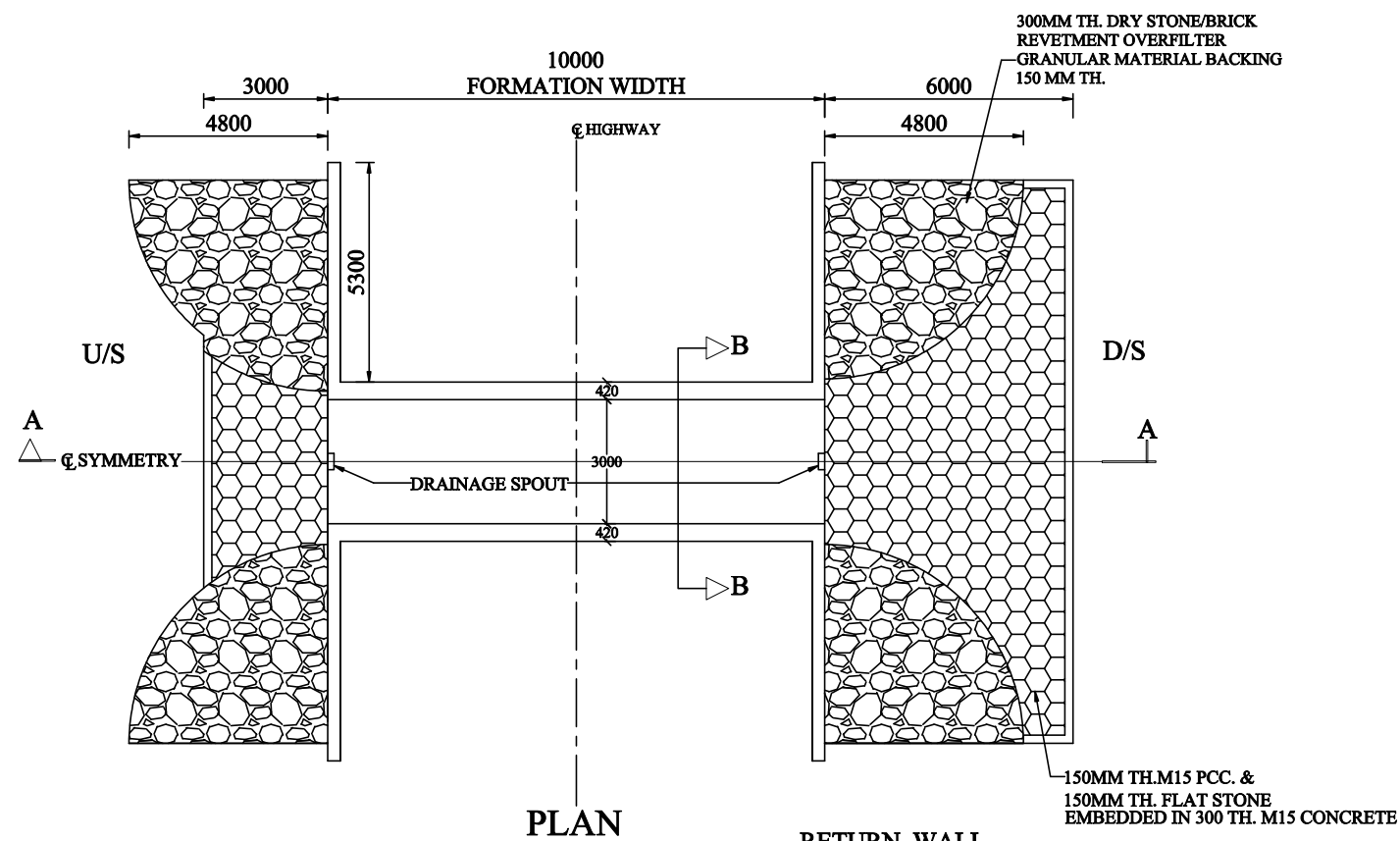
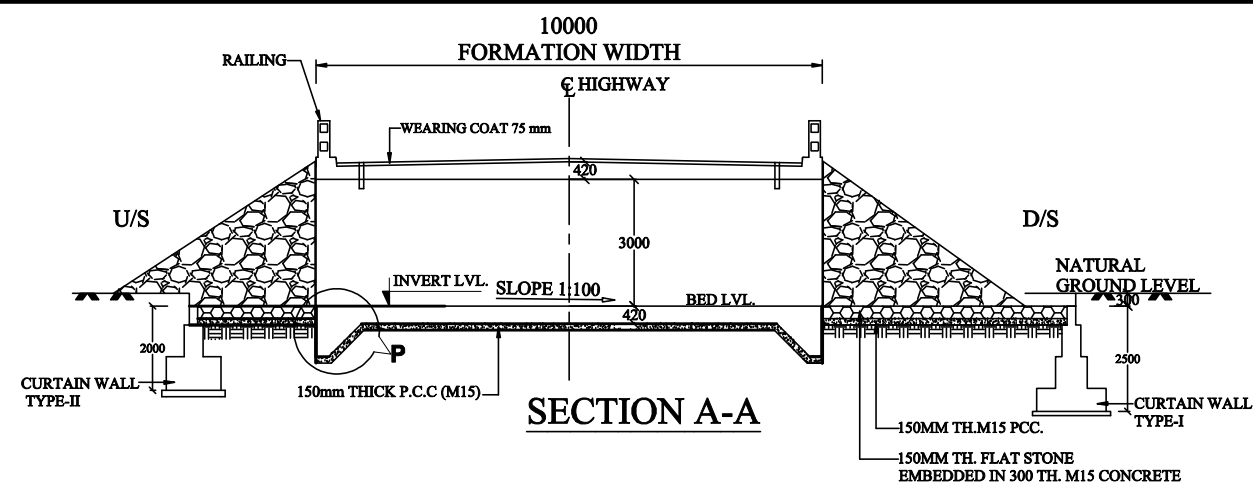


- NOTES:

1. ALL DIMENSIONS ARE IN MM & LEVELS ARE IN METER.
2. ONLY WRITTEN DIMENSIONS ARE TO BE FOLLOWED, DO NOT SCALE THE DIMENSIONS.
3. LOOSE / UNSUITABLE SOIL BELOW CULVERTS IS REPLACED WITH SUITABLE GRANULAR MATERIAL.
4. CHAINAGE / FORMATION LEVEL IS PROVIDED AS PER APPROVED PLAN & PROFILE.
5. FOR CULVERTS SKEW TO THE TRAFFIC DIRECTION LENGTH OF CULVERT SHALL BE ADJUSTED AS PER SITE CONDITION.
6. LONGITUDINAL SLOPE OF PIPE SHALL BE MIN. 1 IN 1000.
7. FIRST CLASS BEDDING CAN BE USED FOR MAXIMUM HEIGHT OF FILL OF 4.0 M.
8. THE FINISHED ROAD LEVEL SHALL BE VERIFIED WITH ALIGNMENT DRAWING & GROUND LEVEL WITH SITE CONDITIONS BEFORE EXECUTION.



			<div>DESIGN CONSULTANTS :</div> <div><div>NEWGEN TECHNOSERVICE ENGINEERS</div><div>NEWGEN TECHNO SERVICE ENGINEERS (P) LTD, PLOT NO:- GA-155, SAILASHREE VIHAR, BHUBANESWAR, ODISHA-751021</div></div>						<div>PROJECT : Construction of By-Pass road to Rayagada Town and J K Pur Town in the state of Odisha on EPC mode.</div>			<div>SCALE</div> <div>H.Scale-NTS V.Scale-NTS</div>	<div>TITLE : R.C.C PIPE CULVERT WITH SINGLE PIPE OF 1.0 METRE DIA AND FIRST CLASS BEDDING FOR HEIGHTS OF FILL VARYING FROM 0.6 M-4.0 M</div>	
Junior Engineer	Asst. Executive Engineer	Executive Engineer	Prep. By	Chk. By	Issued By	Date	Rev. No.	CLIENT :	<div></div> <div>Executive Engineer NH Division, Sunabeda Government of Odisha</div>	JOB ORDER : -	SHEET SIZE			
NH Section, Rayagada	NH Sub-Division, Rayagada	NH Division Sunabeda	D.P.	G.D.S	S.K.M	Jan-2023	R0				A3			





- NOTES:**

1. ALL DIMENSIONS ARE IN MM & LEVELS ARE IN METER.
2. ONLY WRITTEN DIMENSIONS ARE TO BE FOLLOWED, DO NOT SCALE THE DIMENSIONS.
3. LOOSE / UNSUITABLE SOIL BELOW BOX CULVERTS IS REPLACED WITH SUITABLE GRANULAR MATERIAL.
4. IN CASE DEPTH OF EARTH FILLING BETWEEN THE TOP OF THE CULVERT AND THE BOTTOM OF THE PAVEMENT CRUST IS LESS THAN 500 MM, THIS LAYERS IS REPLACED WITH GRANULAR SUB BASE.
5. CHAINAGE / FORMATION LEVEL IS PROVIDED AS PER APPROVED PLAN & PROFILE DRAWING.
6. FOR CULVERTS SKEW TO THE TRAFFIC DIRECTION LENGTH OF CULVERT SHALL BE ADJUSTED AS PER SITE CONDITION.
7. FOR REINF. DETAILS OF RETURN WALL REFER SEPARATE DRAWING.
8. IN CASES WHERE INVERT LEVEL IS HIGHER THAN GROUND LEVEL AT ENDS OF CULVERT OR WHERE UNSUITABLE SOIL IS TO BE REPLACED BY GRANULAR MATERIAL, PROVIDE ADEQUATE CUT OFF WALLS AT ENDS OF CULVERT TO PREVENT SCOUR/EROSION.

IN CASE ALLOWABLE SOIL BEARING CAPACITY IS LESS THAN
ACTUAL BEARING PRESSURE THE SOIL SHOULD BE STABILIZED
TO ACHIEVE SAME.

TABLE SHOWING SALIENT DIMENSIONS

BOX/ TYPE	WIDTH a (mm)	HEIGHT b (mm)	THICKNESS c (mm)	THICKNESS d (mm)	THICKNESS e (mm)	THICKNESS f (mm)	NET BEARING CAPACITY T/M ²
1/33/0	3000	3000	900	420	420	420	10.50

			DESIGN CONSULTANTS : <div> NEWGEN TECHNOSERVICE ENGINEERS</div> NEWGEN TECHNO SERVICE ENGINEERS (P) LTD, PLOT NO:- GA-155, SAILASHREEVIHAR, BHUBANESWAR, ODISHA-751021					PROJECT : Construction of By-Pass road to Rayagada Town and J K Pur Town in the state of Odisha on EPC mode.				SCALE		TITLE : 1/33/0 BOX CULVERT	
Junior Engineer	Asst. Executive Engineer	Executive Engineer	Prep. By Chk. By Issued By Date Rev. No.					CLIENT : <div></div> Executive Engineer NH Division, Sunabeda Government of Odisha	H.Scale-NTS V.Scale-NTS	JOB ORDER : -	SHEET SIZE				
NH Section, Rayagada	NH Sub-Division, Rayagada	NH Division Sunabeda	D.P. G.D.S S.K.M Jan-2023 R0								A3				

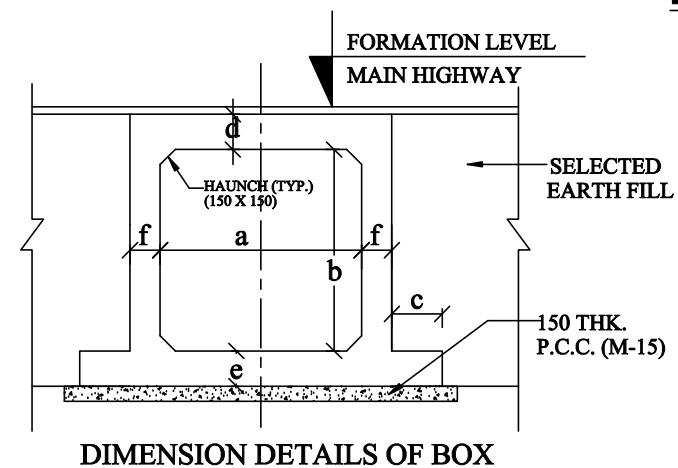
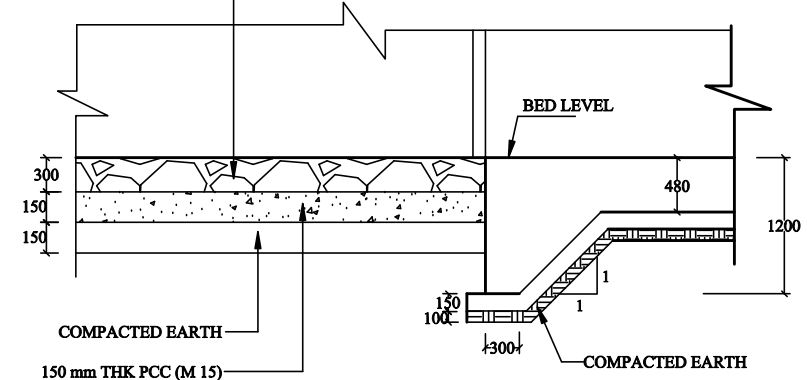
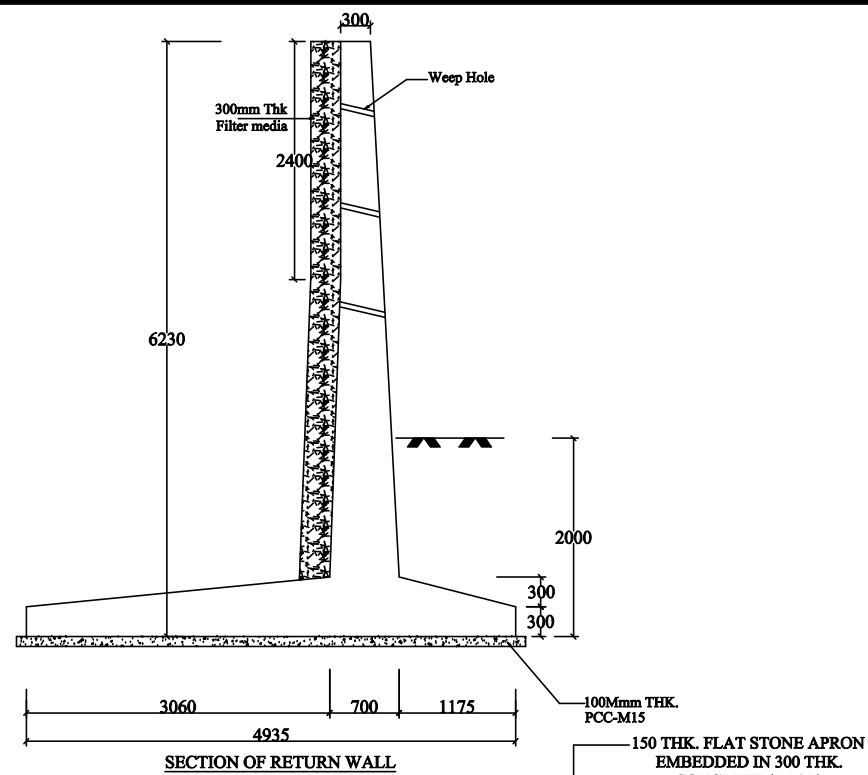
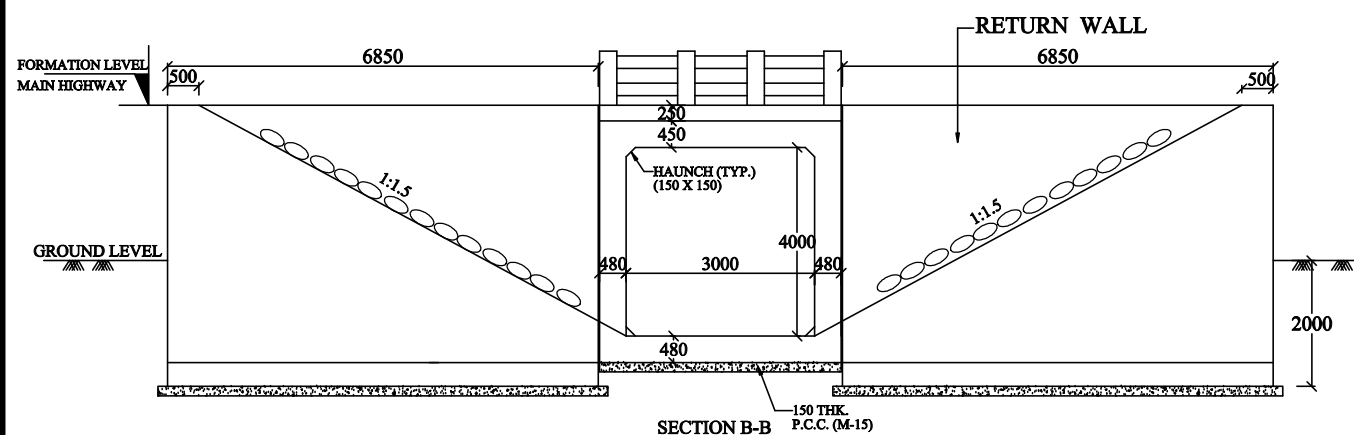
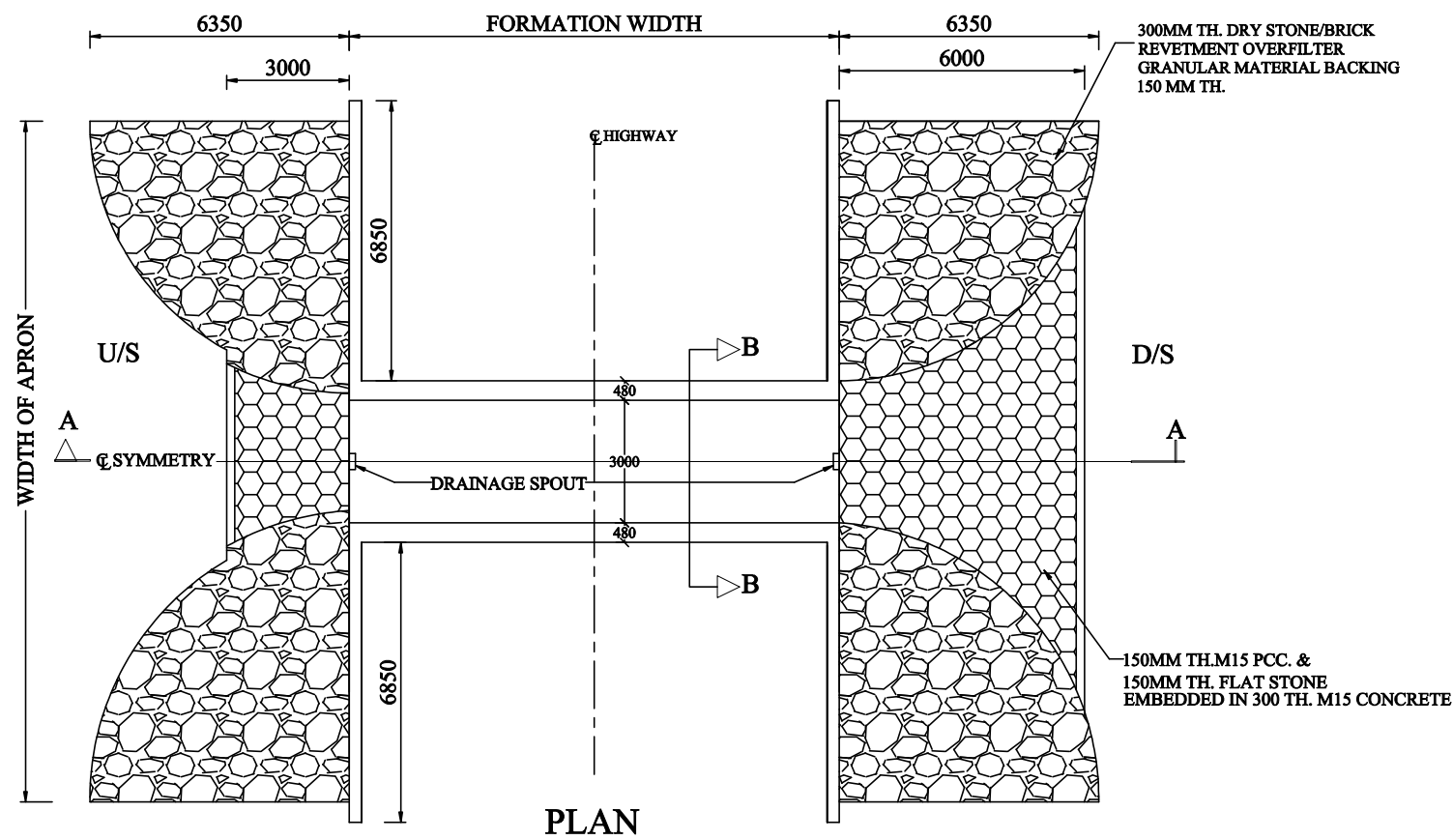
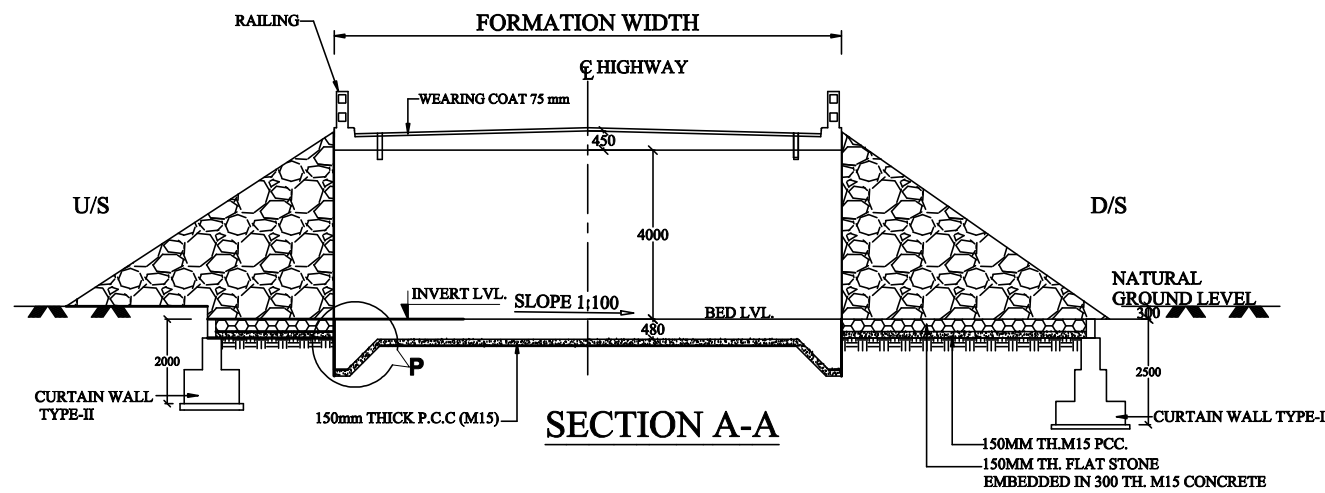




TABLE SHOWING SALIENT DIMENSIONS

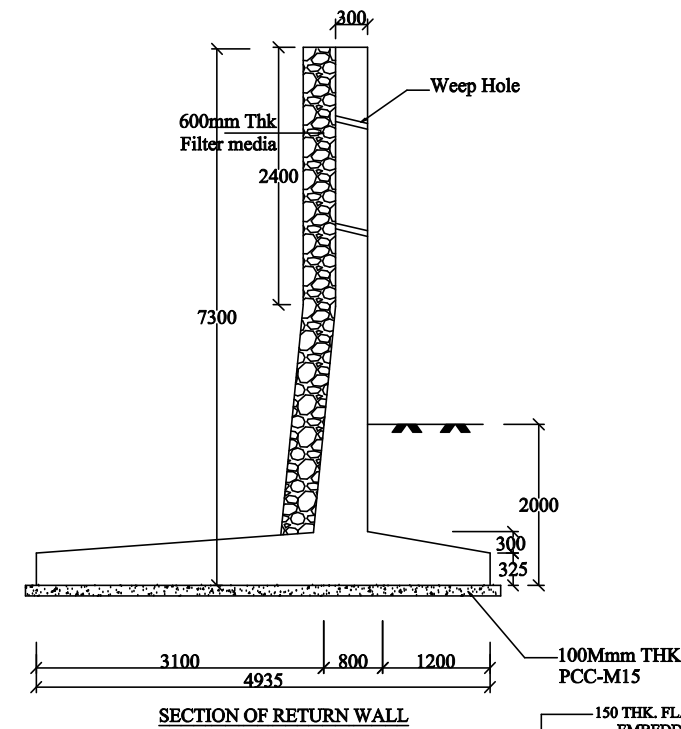
BOX/ TYPE	WIDTH a (mm)	HEIGHT b (mm)	THICKNESS c (mm)	THICKNESS d (mm)	THICKNESS e (mm)	THICKNESS f (mm)	NET BEARING CAPACITY T/M ²
1/34/0	3000	4000	1700	450	480	480	11.37

NOTES:

- ALL DIMENSIONS ARE IN MM & LEVELS ARE IN METER.
- ONLY WRITTEN DIMENSIONS ARE TO BE FOLLOWED, DO NOT SCALE THE DIMENSIONS.
- LOOSE / UNSUITABLE SOIL BELOW BOX CULVERTS IS REPLACED WITH SUITABLE GRANULAR MATERIAL.
- IN CASE DEPTH OF EARTH FILLING BETWEEN THE TOP OF THE CULVERT AND THE BOTTOM OF THE PAVEMENT CRUST IS LESS THAN 500 MM, THIS LAYERS IS REPLACED WITH GRANULAR SUB BASE.
- CHAINAGE / FORMATION LEVEL IS PROVIDED AS PER APPROVED PLAN & PROFILE DRAWING.
- FOR CULVERTS SKEW TO THE TRAFFIC DIRECTION LENGTH OF CULVERT SHALL BE ADJUSTED AS PER SITE CONDITION.
- FOR REINF. DETAILS OF RETURN WALL REFER SEPARATE DRAWING.
- IN CASES WHERE INVERT LEVEL IS HIGHER THAN GROUND LEVEL AT ENDS OF CULVERT OR WHERE UNSUITABLE SOIL IS TO BE REPLACED BY GRANULAR MATERIAL, PROVIDE ADEQUATE CUT OFF WALLS AT ENDS OF CULVERT TO PREVENT SCOUR/EROSION.

IN CASE ALLOWABLE SOIL BEARING CAPACITY IS LESS THAN ACTUAL BEARING PRESSURE THE SOIL SHOULD BE STABILIZED TO ACHIEVE SAME.

			DESIGN CONSULTANTS : <div>NEWGEN TECHNOSERVICE ENGINEERS</div> NEWGEN TECHNO SERVICE ENGINEERS (P) LTD, PLOT NO:- GA-155, SAILASHREEVIHAR, BHUBANESWAR, ODISHA-751021					PROJECT : Construction of By-Pass road to Rayagada Town and J K Pur Town in the state of Odisha on EPC mode.					SCALE		TITLE : 1/34/0 BOX CULVERT	
Junior Engineer	Asst. Executive Engineer	Executive Engineer	Prep. By	Chk. By	Issued By	Date	Rev. No.	CLIENT : <div></div>	Executive Engineer NH Division, Sunabeda Government of Odisha					H.Scale-NTS V.Scale-NTS	JOB ORDER : -	SHEET SIZE
NH Section, Rayagada	NH Sub-Division, Rayagada	NH Division Sunabeda	D.P.	G.D.S	S.K.M	Jan-2023	R0									A3



- [illegible]

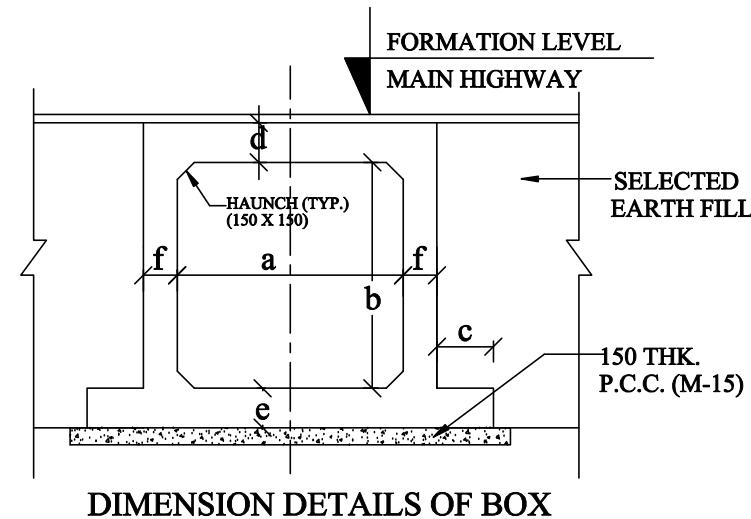
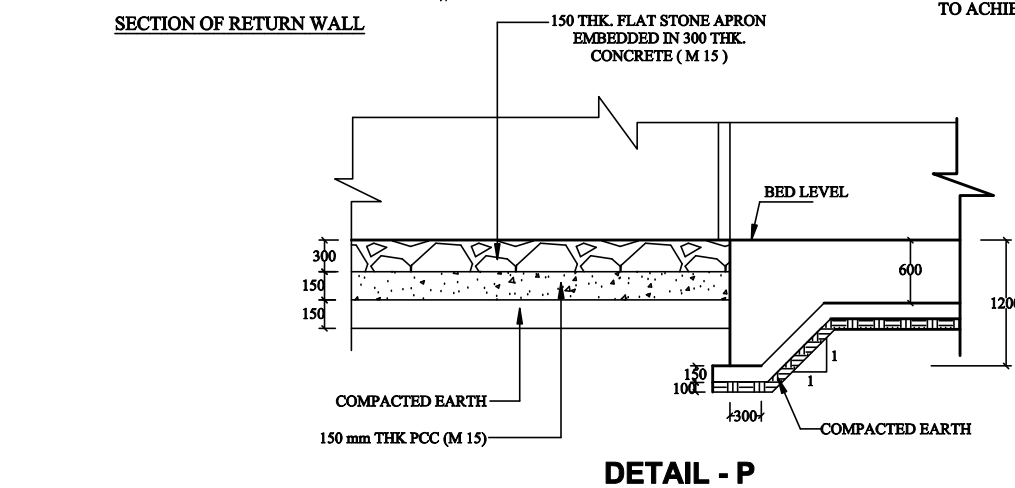
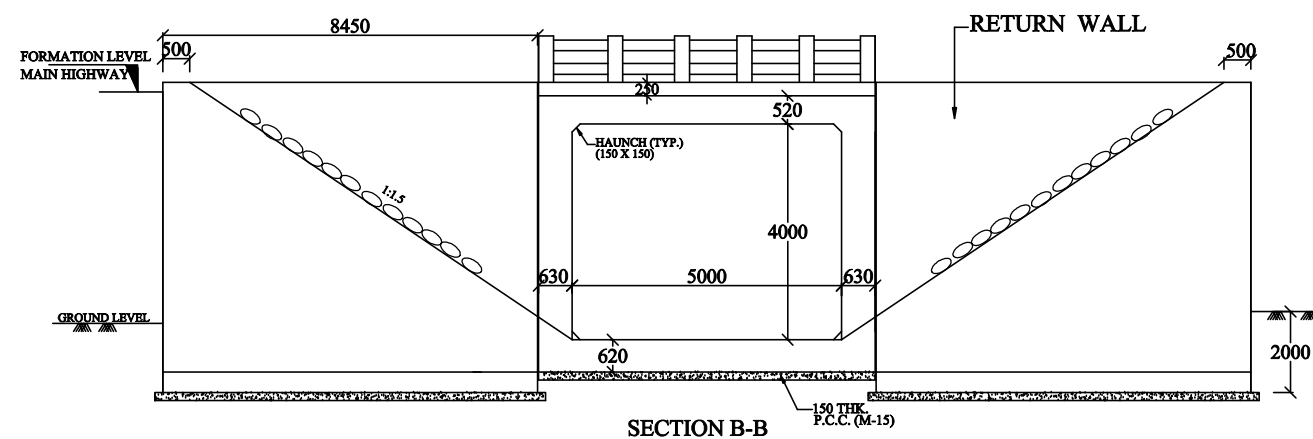


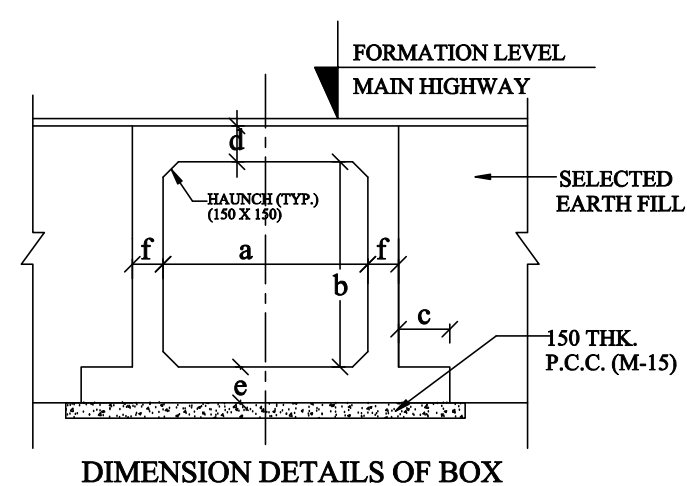
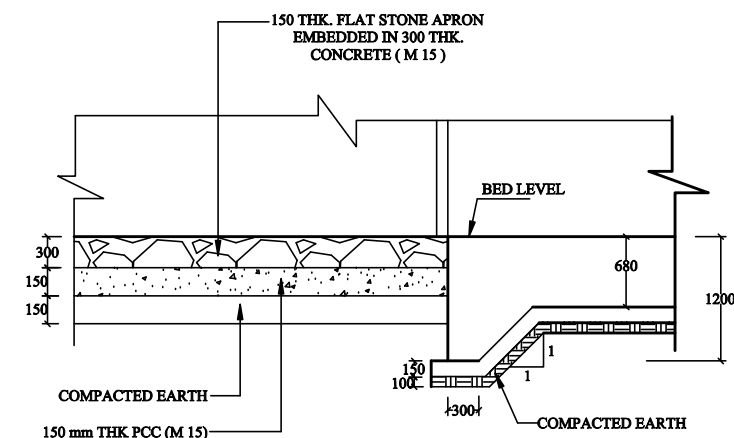
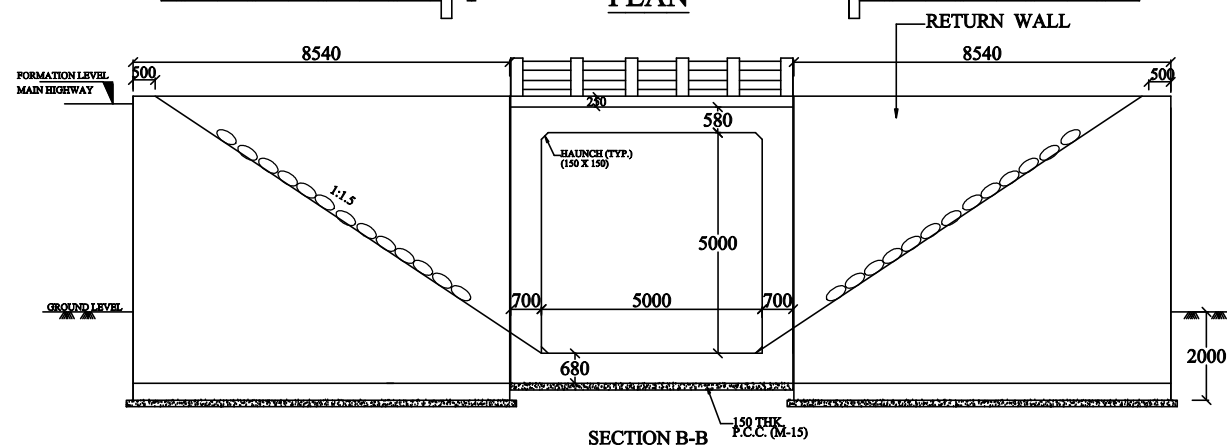
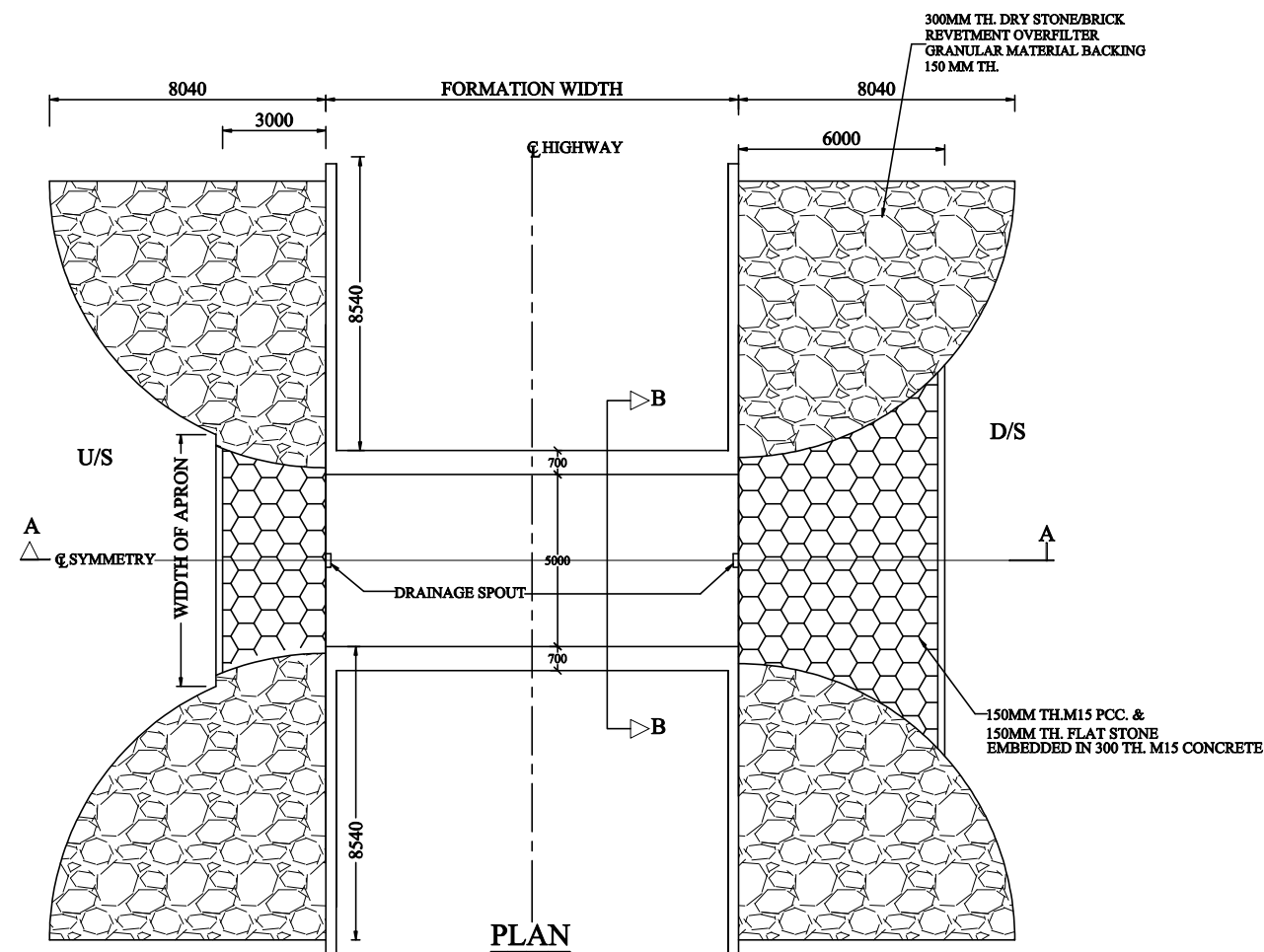
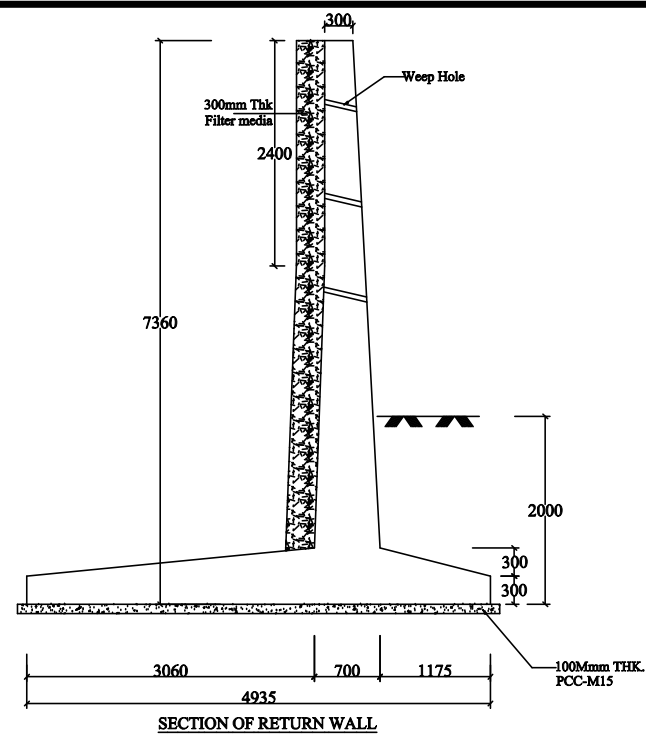
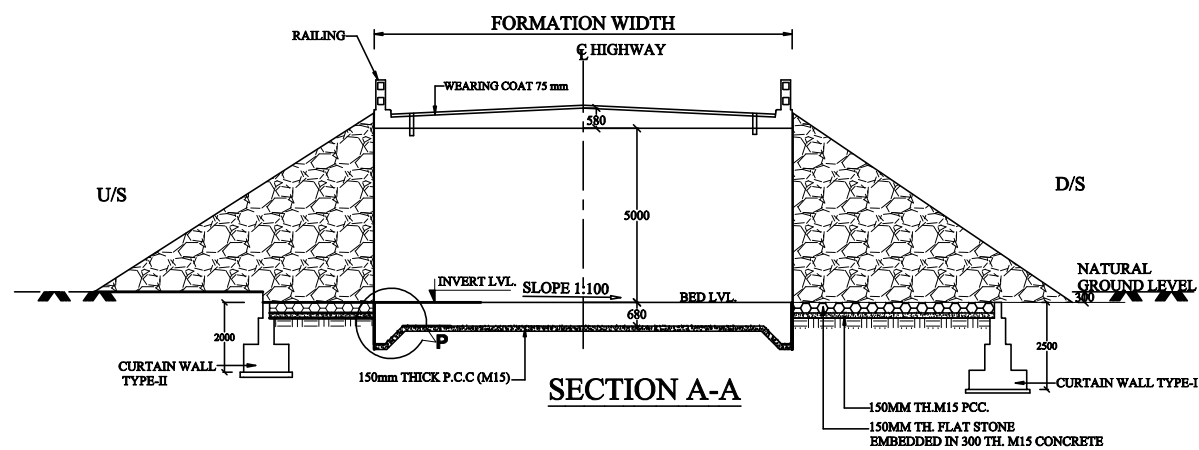


TABLE SHOWING SALIENT DIMENSIONS

BOX/ TYPE	WIDTH a (mm)	HEIGHT b (mm)	THICKNESS c (mm)	THICKNESS d (mm)	THICKNESS e (mm)	THICKNESS f (mm)	NET BEARING CAPACITY T/M ²
1/54/0	5000	4000	1900	520	620	630	10.66

			<div>DESIGN CONSULTANTS :</div> <div><div>NEWGEN TECHNOSERVICE ENGINEERS</div><div>NEWGEN TECHNO SERVICE ENGINEERS (P) LTD, PLOT NO:- GA-155, SAILASHREE VIHAR, BHUBANESWAR, ODISHA-751021</div></div>					<div>PROJECT : Construction of By-Pass road to Rayagada Town and J K Pur Town in the state of Odisha on EPC mode.</div>			SCALE		TITLE : 1/54/0 BOX CULVERT	
Junior Engineer	Asst. Executive Engineer	Executive Engineer						<div>CLIENT :</div> <div>Executive Engineer NH Division, Sunabeda Government of Odisha</div>	H.Scale-NTS V.Scale-NTS	JOB ORDER : -	SHEET SIZE			
NH Section, Rayagada	NH Sub-Division, Rayagada	NH Division Sunabeda									A3			
			Prep. By	Chk. By	Issued By	Date	Rev. No.							
			D.P.	G.D.S	S.K.M	Jan-2023	R0							



- NOTES:**

1. ALL DIMENSIONS ARE IN MM & LEVELS ARE IN METER.
2. ONLY WRITTEN DIMENSIONS ARE TO BE FOLLOWED, DO NOT SCALE THE DIMENSIONS.
3. LOOSE / UNSUITABLE SOIL BELOW BOX CULVERTS IS REPLACED WITH SUITABLE GRANULAR MATERIAL.
4. IN CASE DEPTH OF EARTH FILLING BETWEEN THE TOP OF THE CULVERT AND THE BOTTOM OF THE PAVEMENT CRUST IS LESS THAN 500 MM, THIS LAYERS IS REPLACED WITH GRANULAR SUB BASE.
5. CHAINAGE / FORMATION LEVEL IS PROVIDED AS PER APPROVED PLAN & PROFILE DRAWING.
6. FOR CULVERTS SKEW TO THE TRAFFIC DIRECTION LENGTH OF CULVERT SHALL BE ADJUSTED AS PER SITE CONDITION.
7. FOR REINF. DETAILS OF RETURN WALL REFER SEPARATE DRAWING.
8. IN CASES WHERE INVERT LEVEL IS HIGHER THAN GROUND LEVEL AT ENDS OF CULVERT OR WHERE UNSUITABLE SOIL IS TO BE REPLACED BY GRANULAR MATERIAL, PROVIDE ADEQUATE CUT OFF WALLS AT ENDS OF CULVERT TO PREVENT SCOUR/EROSION.



IN CASE ALLOWABLE SOIL BEARING CAPACITY IS LESS THAN
ACTUAL BEARING PRESSURE THE SOIL SHOULD BE STABILIZED
TO ACHIEVE SAME.

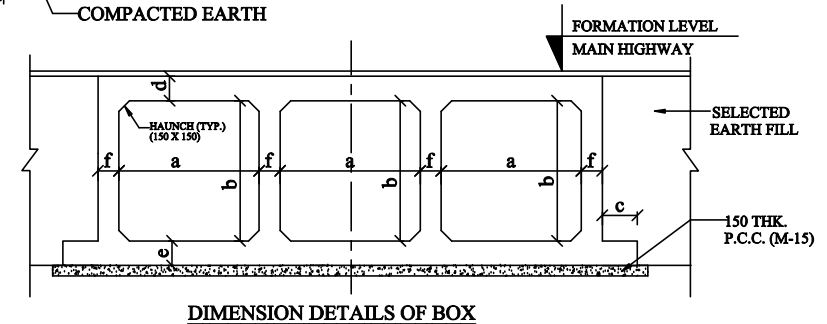
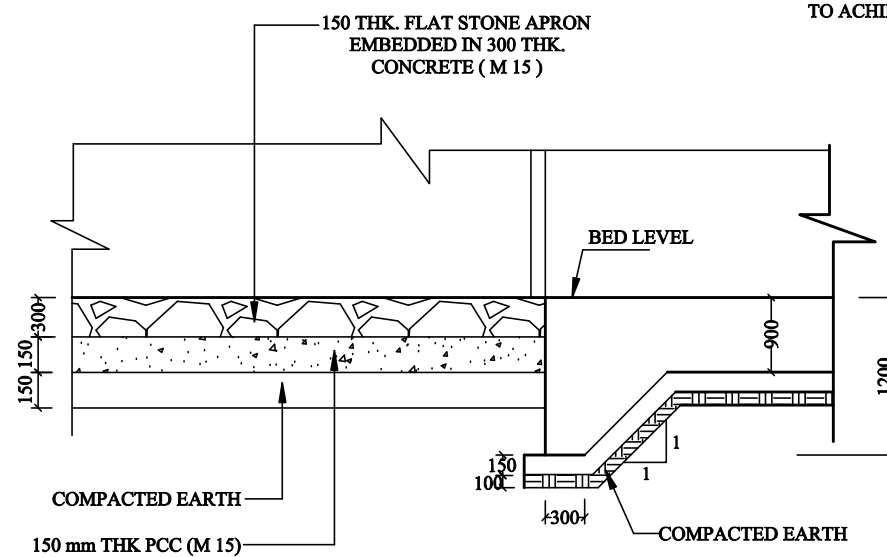
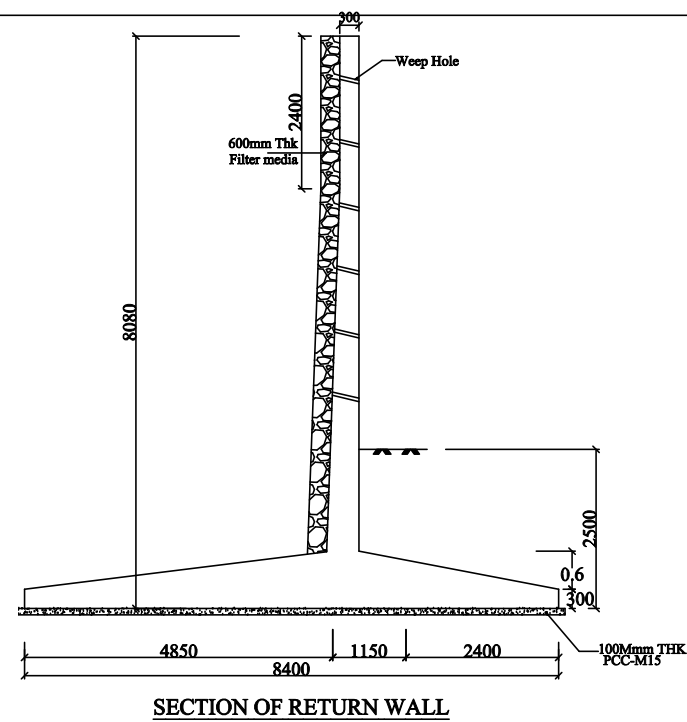
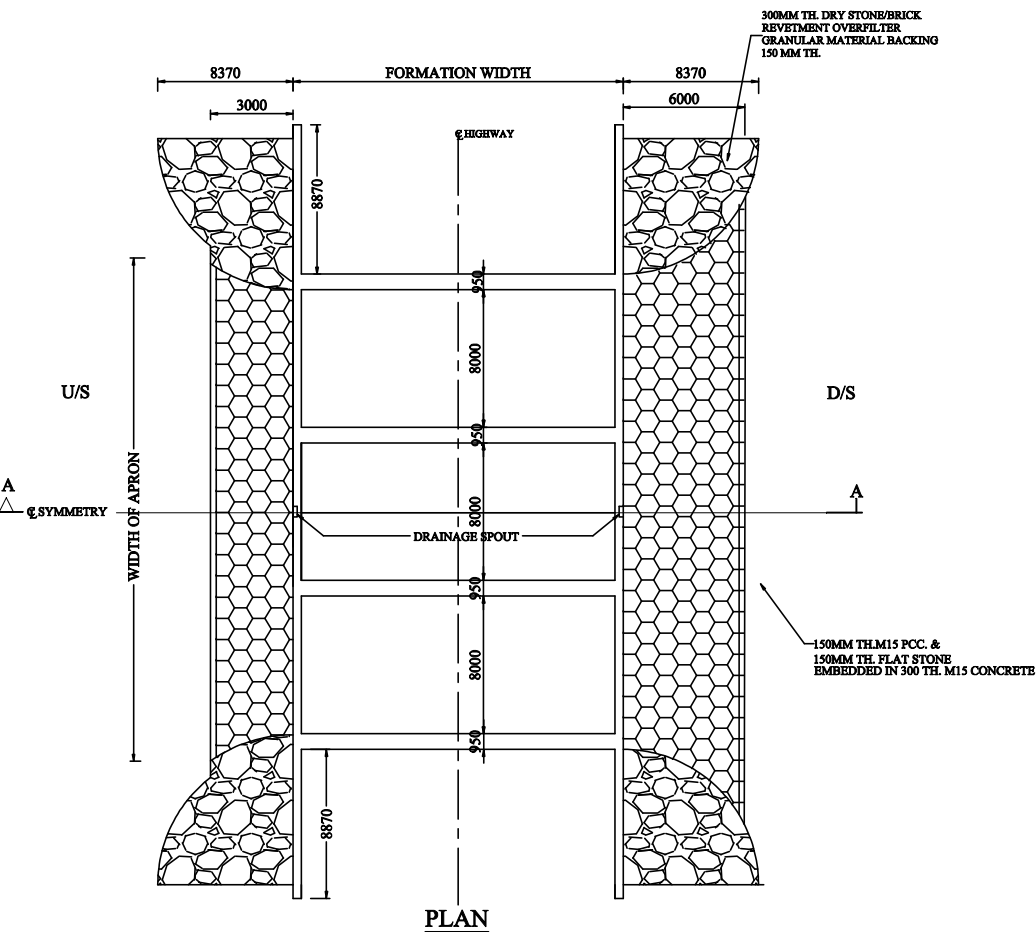
DETAIL - P

DIMENSION DETAILS OF BOX

TABLE SHOWING SALIENT DIMENSIONS

BOX/ TYPE	WIDTH a (mm)	HEIGHT b (mm)	THICKNESS c (mm)	THICKNESS d (mm)	THICKNESS e (mm)	THICKNESS f (mm)	NET BEARING CAPACITY T/M ²
1/55/0	5000	5000	1500	580	680	700	12.40

			DESIGN CONSULTANTS : <div>NEWGEN TECHNOSERVICE ENGINEERS</div> NEWGEN TECHNO SERVICE ENGINEERS (P) LTD, PLOT NO:- GA-155, SAILASHREE VIHAR, BHUBANESWAR, ODISHA-751021					PROJECT : Construction of By-Pass road to Rayagada Town and J K Pur Town in the state of Odisha on EPC mode.					SCALE		TITLE : 1/55/0 BOX CULVERT			
Junior Engineer	Asst. Executive Engineer	Executive Engineer						CLIENT : <div></div> Executive Engineer NH Division, Sunabeda Government of Odisha					H.Scale-NTS V.Scale-NTS		JOB ORDER : -		SHEET SIZE	
NH Section, Rayagada	NH Sub-Division, Rayagada	NH Division Sunabeda	Prep. By	Chk. By	Issued By	Date	Rev. No.								A3			
			D.P.	G.D.S	S.K.M	Jan-2023	R0											





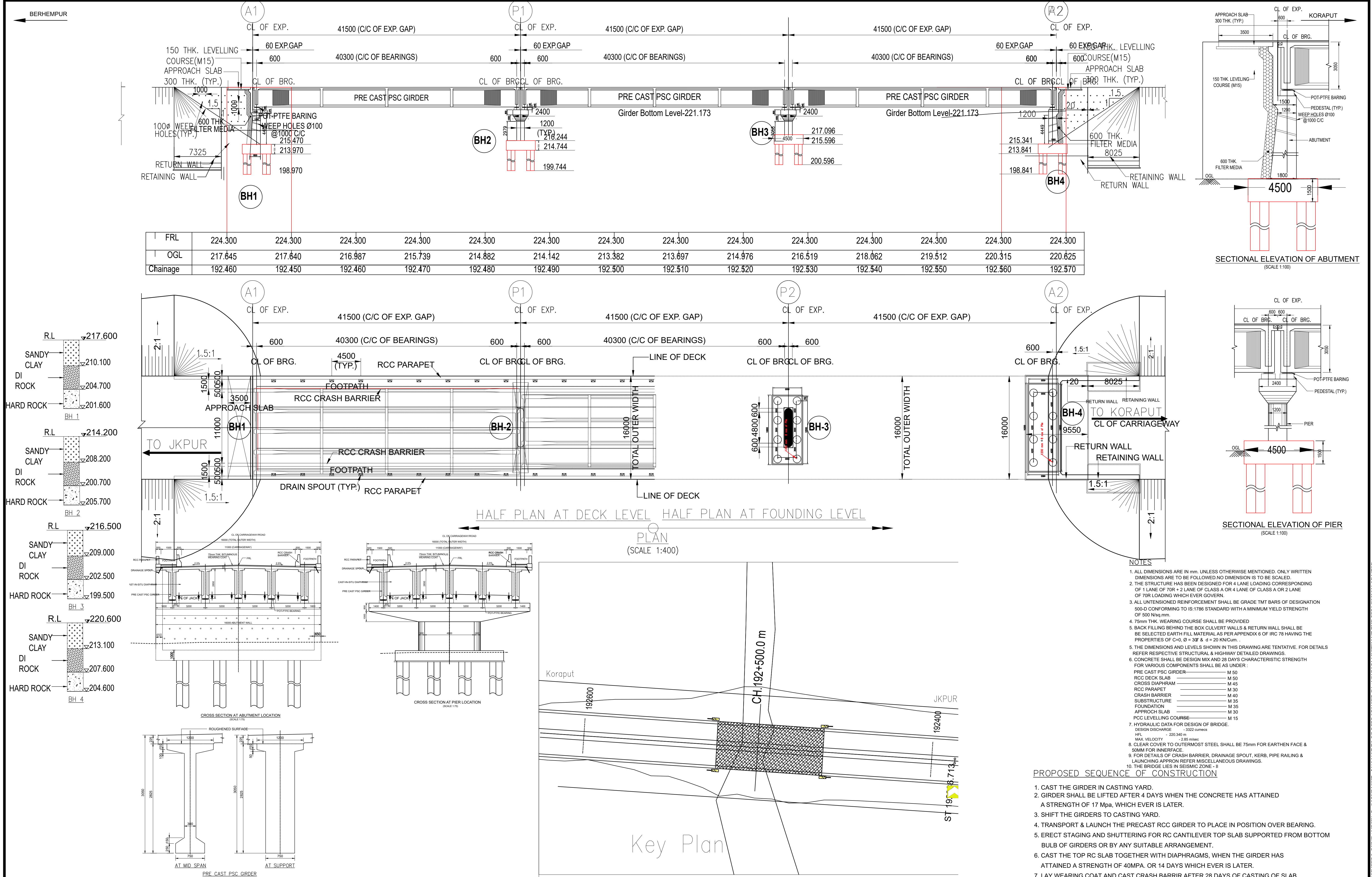
1. ALL DIMENSIONS ARE IN MM & LEVELS ARE IN METER.
2. ONLY WRITTEN DIMENSIONS ARE TO BE FOLLOWED, DO NOT SCALE THE DIMENSIONS.
3. LOOSE / UNSUITABLE SOIL BELOW BOX CULVERTS IS REPLACED WITH SUITABLE GRANULAR MATERIAL.
4. IN CASE DEPTH OF EARTH FILLING BETWEEN THE TOP OF THE CULVERT AND THE BOTTOM OF THE PAVEMENT CRUST IS LESS THAN 500 MM, THIS LAYERS IS REPLACED WITH GRANULAR SUB BASE.
5. CHAINAGE / FORMATION LEVEL IS PROVIDED AS PER APPROVED PLAN & PROFILE DRAWING.
6. FOR CULVERTS SKEW TO THE TRAFFIC DIRECTION LENGTH OF CULVERT SHALL BE ADJUSTED AS PER SITE CONDITION.
7. FOR REINF. DETAILS OF RETURN WALL REFER SEPARATE DRAWING.
8. IN CASES WHERE INVERT LEVEL IS HIGHER THAN GROUND LEVEL AT ENDS OF CULVERT OR WHERE UNSUITABLE SOIL IS TO BE REPLACED BY GRANULAR MATERIAL, PROVIDE ADEQUATE CUT OFF WALLS AT ENDS OF CULVERT TO PREVENT SCOUR/EROSION.

IN CASE ALLOWABLE SOIL BEARING CAPACITY IS LESS THAN ACTUAL BEARING PRESSURE THE SOIL SHOULD BE STABILIZED TO ACHIEVE SAME.

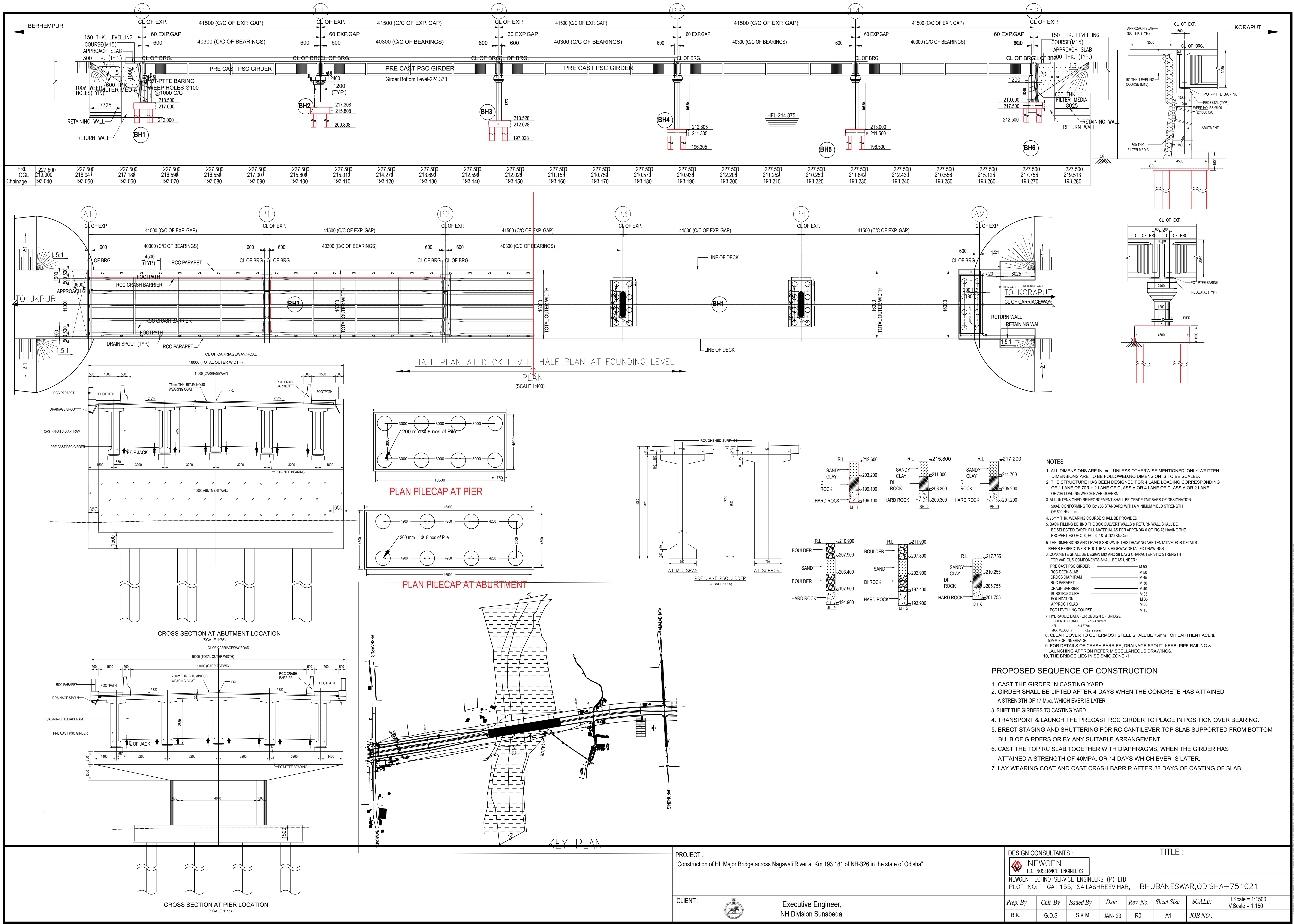
TABLE SHOWING SALIENT DIMENSIONS

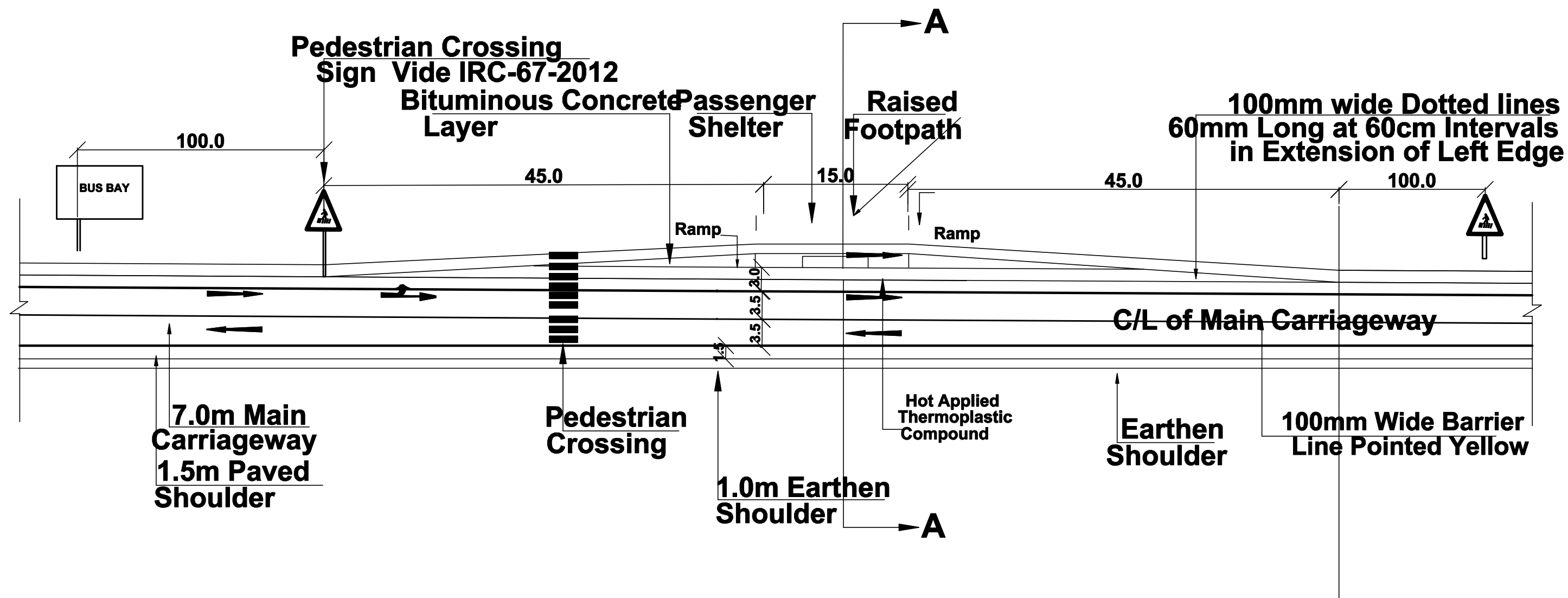
BOX/ TYPE	WIDTH a (mm)	HEIGHT b (mm)	THICKNESS c (mm)	THICKNESS d (mm)	THICKNESS e (mm)	THICKNESS f (mm)	NET BEARING CAPACITY T/M ²
3/85/0	8000	5000	300	850	950	950	11.37

			<div>DESIGN CONSULTANTS :</div> <div><div><div>NEWGEN TECHNOSERVICE ENGINEERS</div></div><div>NEWGEN TECHNO SERVICE ENGINEERS (P) LTD, PLOT NO:- GA-155, SAILASHREE VIHAR, BHUBANESWAR, ODISHA-751021</div></div>					<div>PROJECT : Construction of By-Pass road to Rayagada Town and J K Pur Town in the state of Odisha on EPC mode.</div>					SCALE		TITLE : 3/85/0 BOX CULVERT			
Junior Engineer	Asst. Executive Engineer	Executive Engineer						<div>CLIENT :</div> <div><div></div><div>Executive Engineer NH Division, Sunabeda Government of Odisha</div></div>					H.Scale-NTS V.Scale-NTS		JOB ORDER : -		SHEET SIZE	
NH Section, Rayagada	NH Sub-Division, Rayagada	NH Division Sunabeda	Prep. By	Chk. By	Issued By	Date	Rev. No.								A3			
			D.P.	G.D.S	S.K.M	Jan-2023	R0											





PROJECT : "Construction of HL Major Bridge across Sitagurha Nadi at Km 192.500 of NH-326 in the state of Odisha"		DESIGN CONSULTANTS : NEWGEN TECHNO SERVICE ENGINEERS (P) LTD, PLOT NO:- GA-155, SAILASHREEVIHAR, BHUBANESWAR, ODISHA-751021		TITLE :	
CLIENT :	Executive Engineer, NH Division Sunabeda	Prep. By	Chk. By	Issued By	Date
		B.K.P	G.D.S	S.K.M	JAN-23
		Rev. No	R0	Sheet Size	A1
		SCALE:	H.Scale = 1:1500 V.Scale = 1:150	JOB NO:	

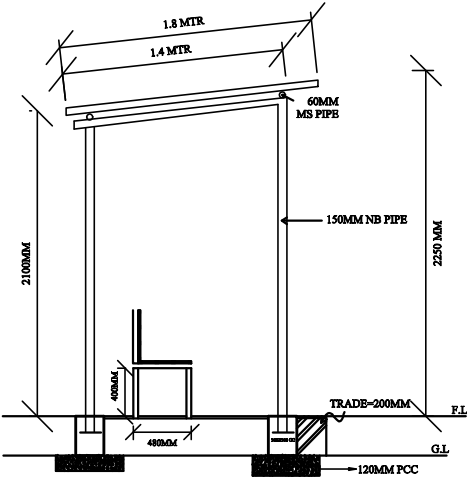
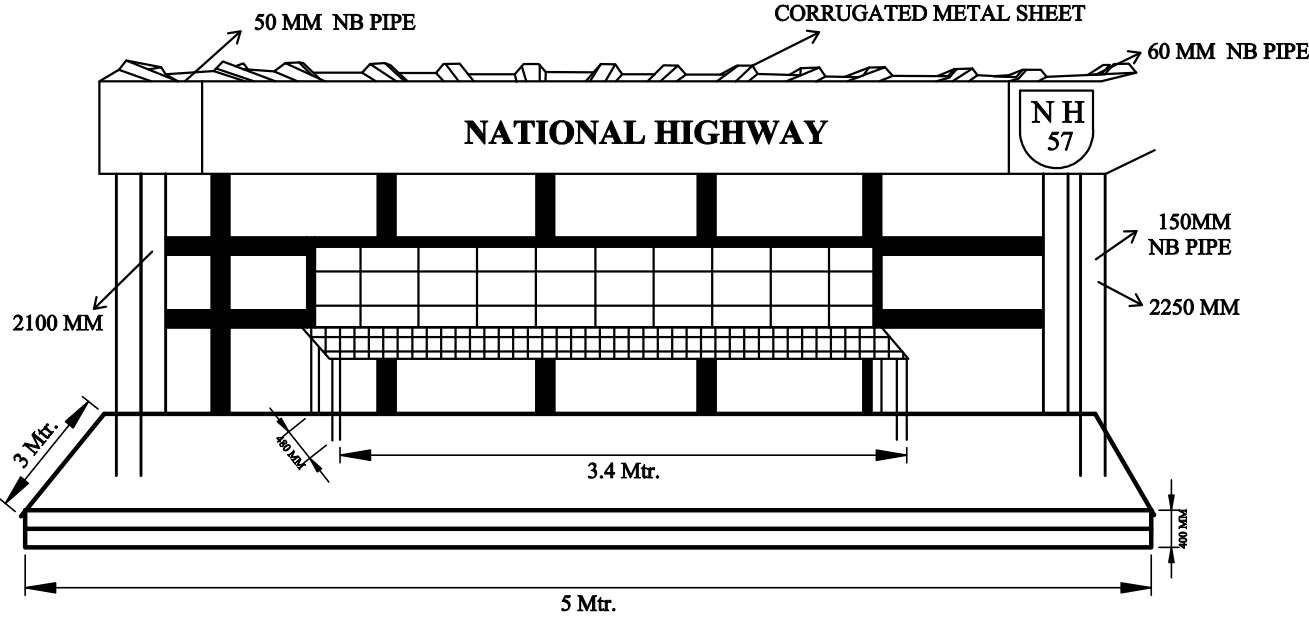
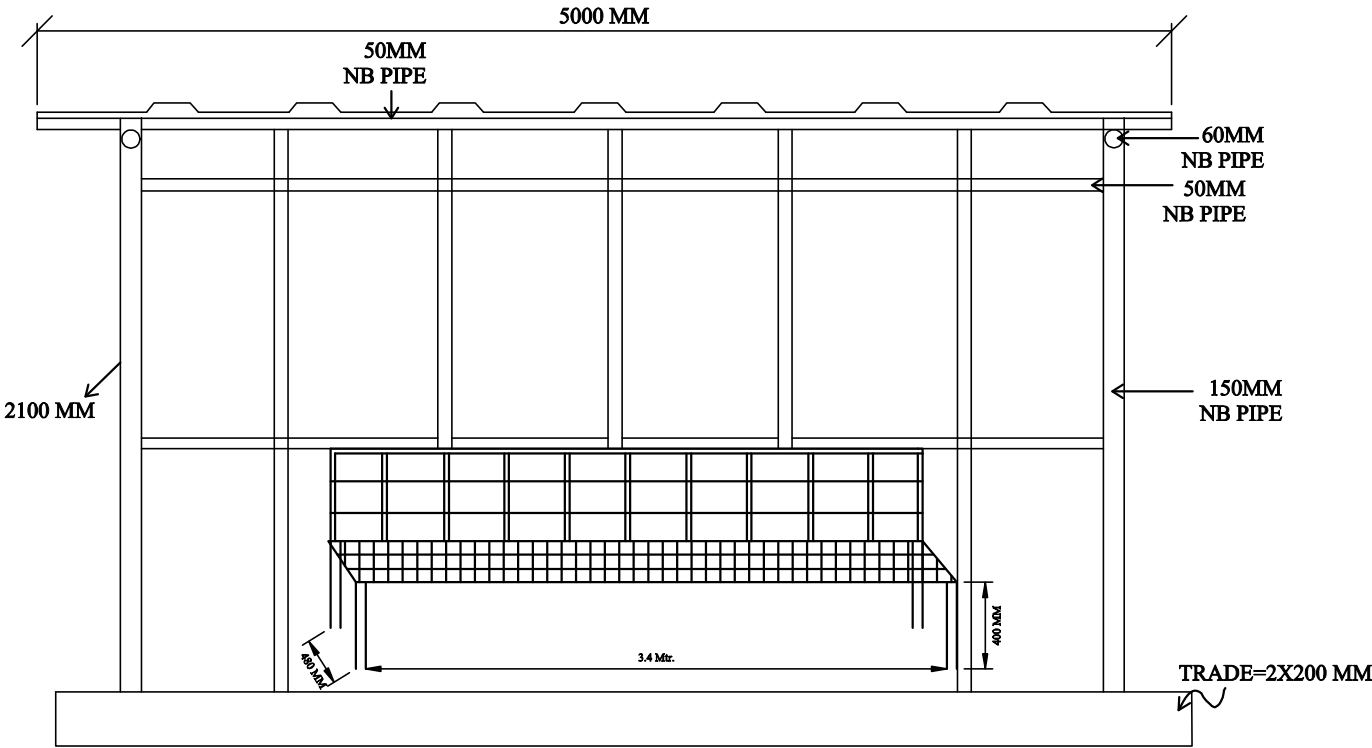






PLAN OF Bus Bay

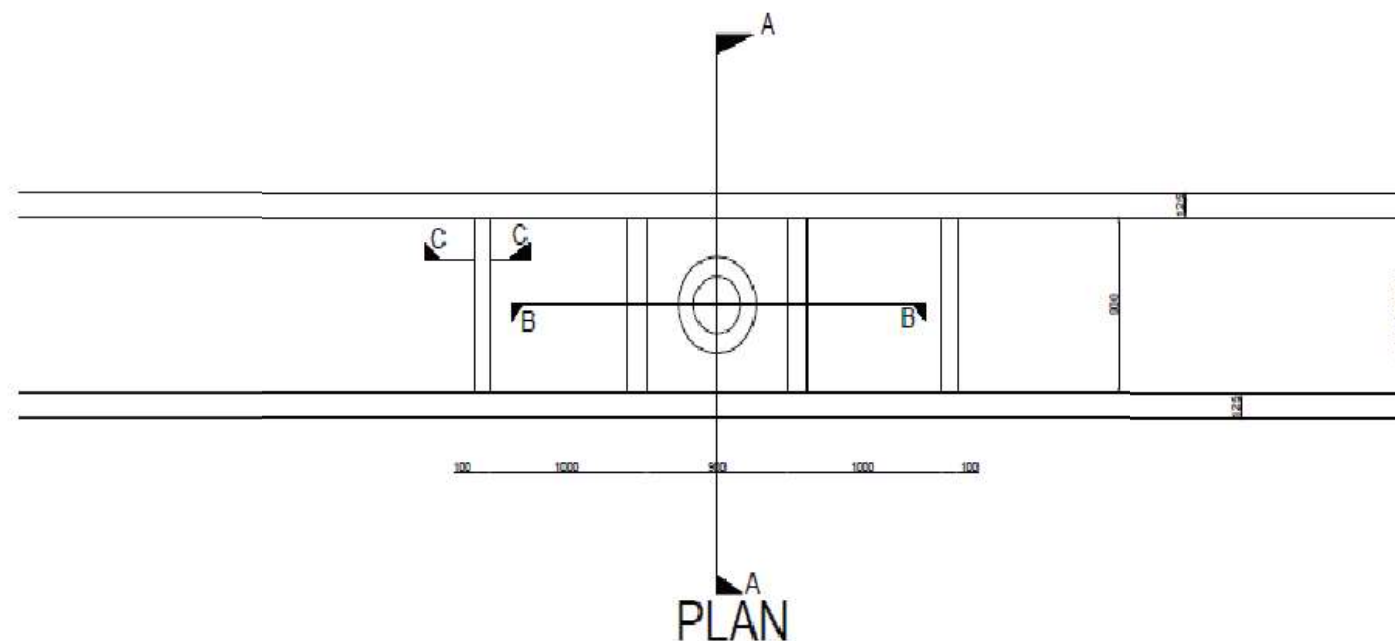
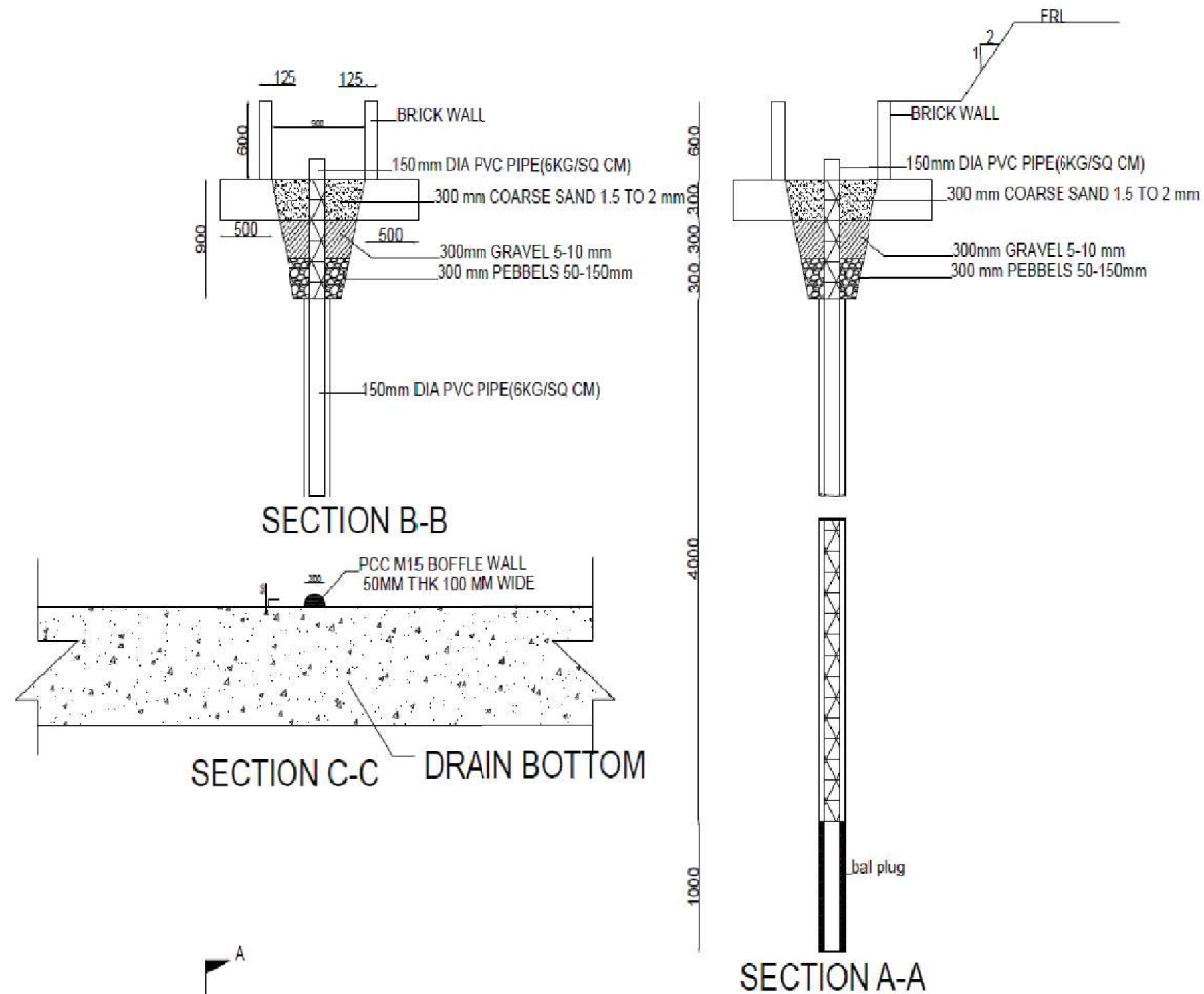
			DESIGN CONSULTANTS : <div>NEWGEN TECHNOSERVICE ENGINEERS</div> NEWGEN TECHNO SERVICE ENGINEERS (P) LTD, PLOT NO:- GA-155, SAILASHREEVIHAR, BHUBANESWAR, ODISHA-751021					PROJECT : Construction of By-Pass road to Rayagada Town and J K Pur Town in the state of Odisha on EPC mode.					SCALE		TITLE : BUS BAY DRAWINGS	
Junior Engineer	Asst. Executive Engineer	Executive Engineer	Prep. By	Chk. By	Issued By	Date	Rev. No.	CLIENT : <div></div> Executive Engineer NH Division, Sunabeda Government of Odisha						H.Scale-NTS V.Scale-NTS	JOB ORDER : -	SHEET SIZE A3
NH Section, Rayagada	NH Sub-Division, Rayagada	NH Division Sunabeda	D.P.	G.D.S	S.K.M	Jan-2023	R0									

BUS SHELTER DRAWING



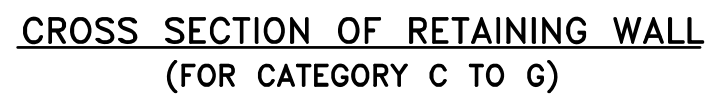
		DESIGN CONSULTANTS : <div> NEWGEN TECHNOSERVICE ENGINEERS</div> NEWGEN TECHNO SERVICE ENGINEERS (P) LTD, PLOT NO:- GA-155, SAILASHREE VIHAR, BHUBANESWAR, ODISHA-751021					PROJECT : Construction of By-Pass road to Rayagada Town and J K Pur Town in the state of Odisha on EPC mode.					SCALE		TITLE : BUS SHELTER	
Junior Engineer	Asst. Executive Engineer	Executive Engineer			<div>CLIENT : </div> <div>Executive Engineer NH Division, Sunabeda Government of Odisha</div>					H.Scale-NTS V.Scale-NTS		JOB ORDER : -		SHEET SIZE	
NH Section, Rayagada	NH Sub-Division, Rayagada	NH Division Sunabeda												A3	
		Prep. By	Chk. By	Issued By	Date	Rev. No.									
		D.P.	G.D.S	S.K.M	Jan-2023	R0									

WATER HARVESTING STRUCTURE



note:- ALL DIMENSIONS ARE
IN MM

2. THE EXACT DISTANCE
SHALL BE DECIDED AS PER
SITE CONDITION.



CATEGORY	H _{MAX}	W	h1	h2	h3	h4	b1	b2	b3
A	2000	2000	300	—	1700	1000	1300	300	400
B	3000	2650	300	—	2700	1000	1750	300	600
C	4000	3150	300	150	2400	1500	2040	410	700
D	5000	4230	300	200	2400	1500	2680	550	1000
E	6000	4935	300	300	2400	2000	3060	700	1175
F	7000	5100	300	325	2400	2000	3100	800	1200
G	9000	8400	300	600	2400	2500	4850	1150	2400