
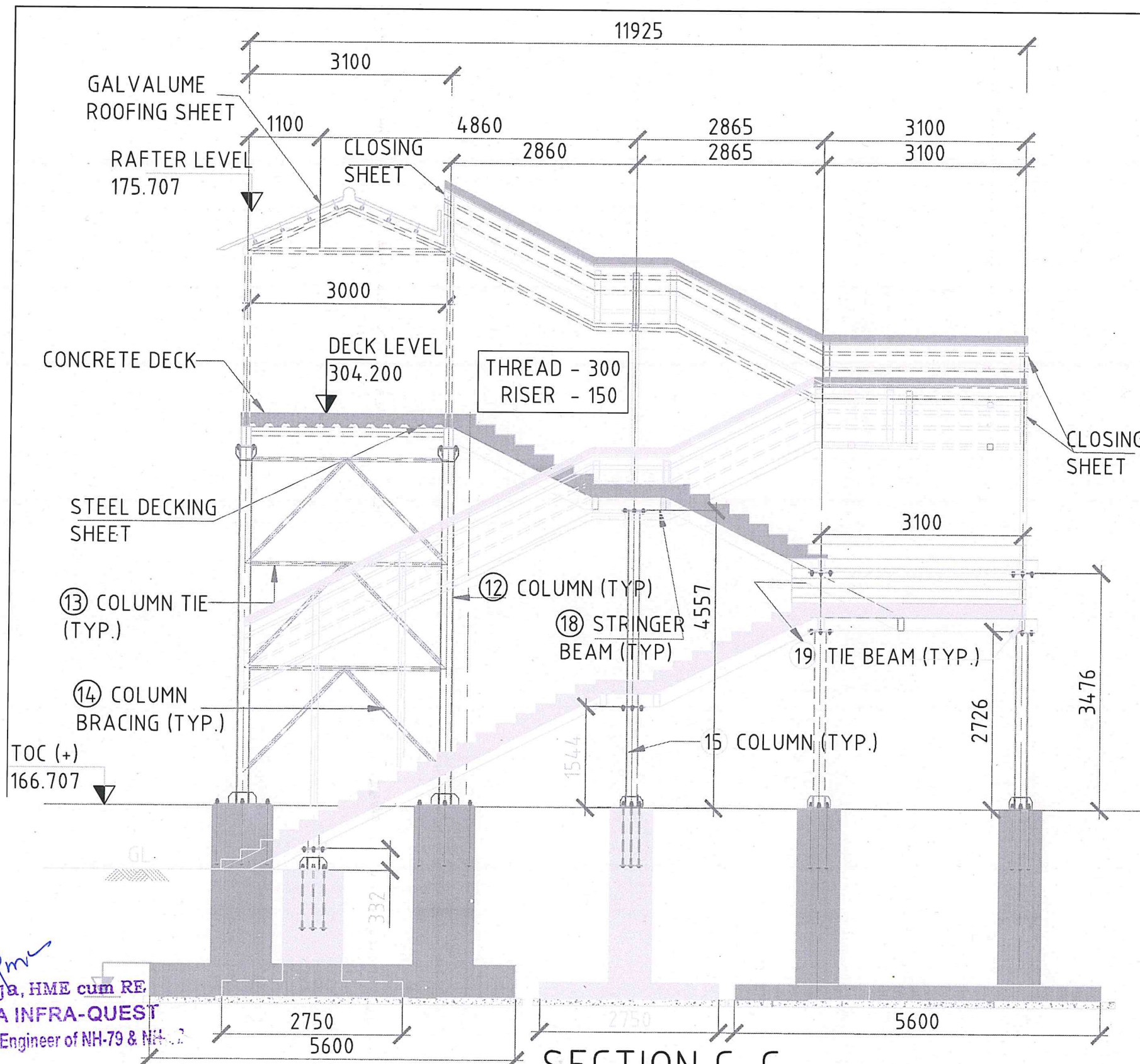


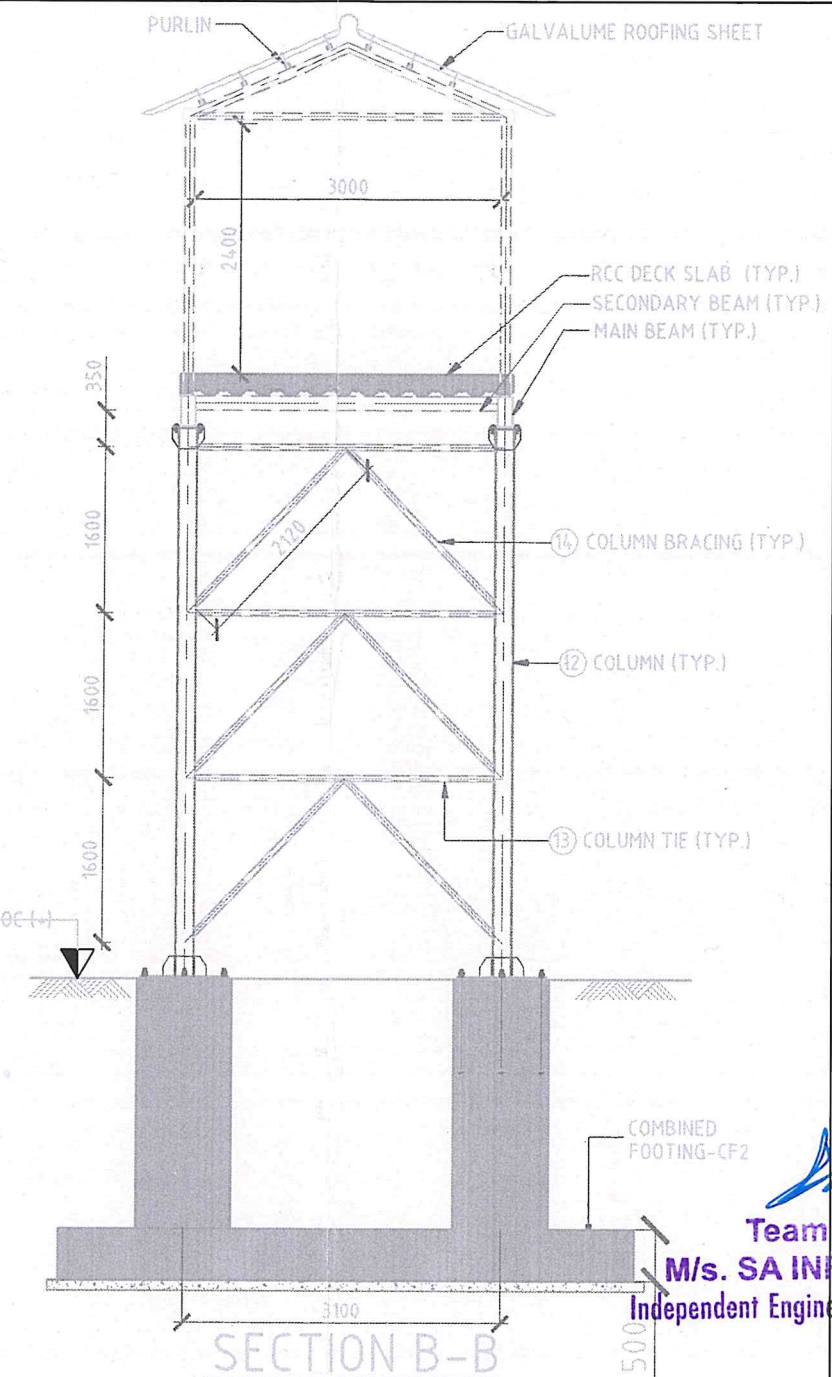
Team Leader
M/s. SA INFRA - QUEST
Independent Engineer of NH-79 & NH-32

N.Raja, HME cum RE
M/s. SA INFRA-QUEST
Independent Engineer of NH-79 & NH-32

CLIENT:  NATIONAL HIGHWAY AUTHORITY OF INDIA G-5 & G-6 DWARAKA NEW DELHI	CONCESSIONAIRE: SU TOLL ROAD PRIVATE LTD REGD OFF: H BLOCK, 1ST FLOOR, DHIRUBHAI AMBANI KNOWLEDGE CITY, NEVI MIMBAI - 400710.	INDEPENDANT ENGINEER: SA INFRASTRUCTURES CONSULTANT PVT. LTD IN ASSOCIATION WITH QUEST ENGINEERS & CONSULTANTS PVT. LTD. 1101B: 11Floor, Tower A-II, Ansal Corporate Park, Plot No:7A/1, Sector-142, Noida - 201 301, India	PROJECT: 4/6 LANE OF SALEM - ULUNDURPET SECTION FROM KM 6+313 TO KM 136+670.516 OF NH-79 BAR SCALE : 0 1 2 3 4 5 6 7 8 9 10 -1:100 0 2 4 6 8 10 12 14 16 18 20 -1:50	PLAN & ELEVATION OF FOB TITLE:- FOB at Km. 70+200	APPROVED BY:	Drawing No: SU/NH-68/FOB/01
---	---	--	---	--	---------------------	---



SECTION C-C
(SCALE 1:125)




SECTION B-B

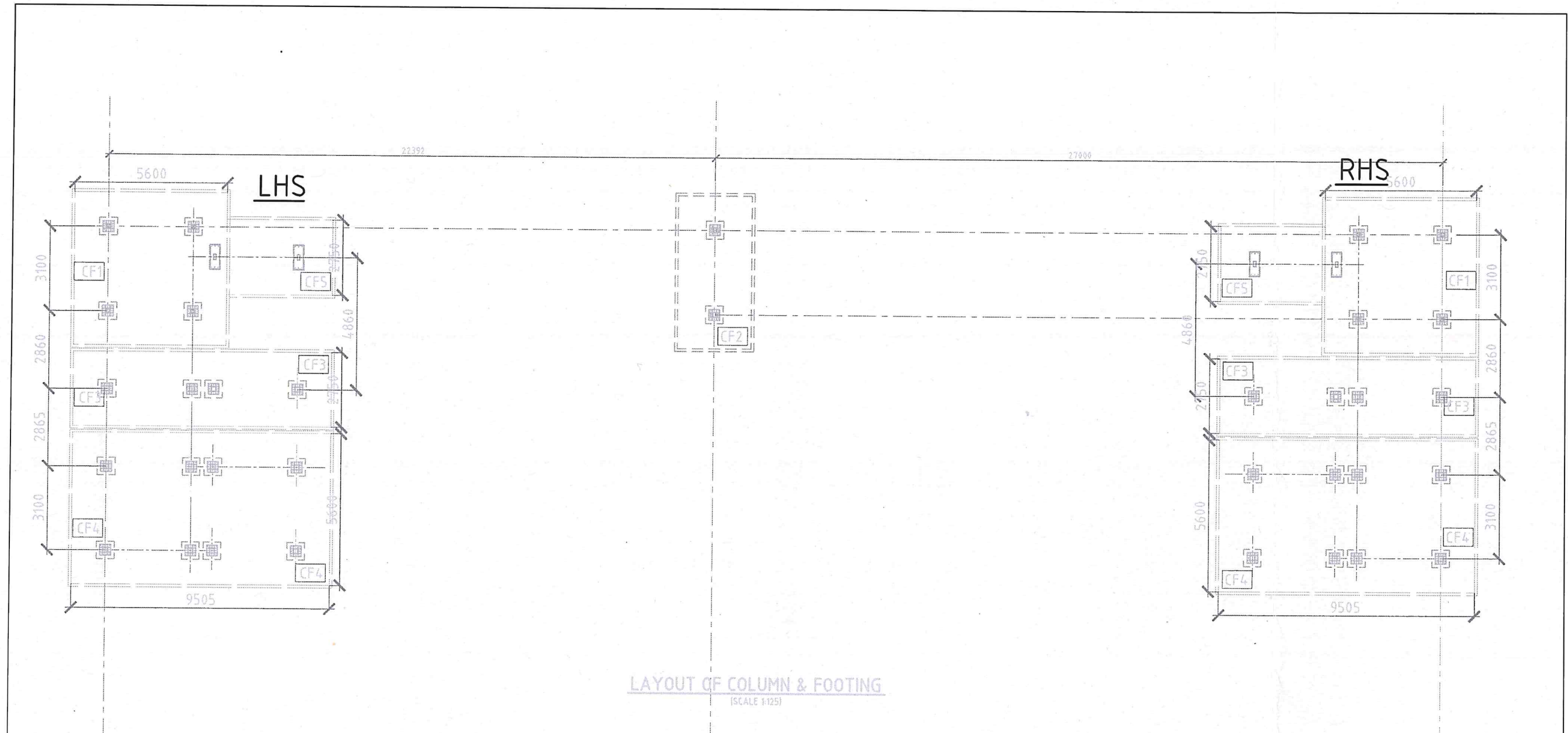
NOTES:

1. ALL DIMENSIONS ARE IN MILLIMETRES
2. ALL WELDS ARE 8mm FILLET WELD UNLESS OTHERWISE SPECIFIED
3. THE CUT LENGTH OF MEMBERS AND THE NOS. REQUIRED SHALL BE DETERMINED AT SITE BY FULL SCALE LAYOUT
4. GRADE OF ALL STRUCTURAL STEEL SHALL CONFORM TO I.S.2062-2010
5. ALL BOLTS & PINS ARE OF 8.8 GRADE UNLESS OTHERWISE SPECIFIED
6. CONCRETE GRADE SHALL BE M30
7. GRADE OF STRUCTURAL STEEL :YST 310.
8. GRADE OF STEEL : Fe550.
9. ALL STRUCTURAL STEEL MEMBERS SHOULD BE TREATED WITH PRIMER AND ANTI-CORROSIVE PAINTS/COATING AS PER APPLICABLE SPECIFICATION
10. FOUNDING LEVEL SHALL BE MINIMUM 3m FROM FRL.
11. SBC AT SITE CONSIDERED IS 20T/M²

Team Leader
M/s. SA INFRA - QUEST
Independent Engineer of NH-79 & NH-32

N. Raja, HME cum RE
M/s. SA INFRA-QUEST
Independent Engineer of NH-79 & NH-32

CLIENT:  NATIONAL HIGHWAY AUTHORITY OF INDIA G-5 & G-6 DWARAKA NEW DELHI	CONCESSIONAIRE: SU TOLL ROAD PRIVATE LTD REGD OFF: H BLOCK, 1ST FLOOR, DHIRUBHAI AMBANI KNOWLEDGE CITY, NEVI MIMBAI - 400710.	INDEPENDANT ENGINEER: SA INFRASTRUCTURE CONSULTANT PVT. LTD BY ASSOCIATION WITH QUEST ENGINEERS & CONSULTANTS PVT. LTD. 1101B: 11Floor, Tower A-II, Ansal Corporate Park, Plot No:7A/1, Sector-142, Noida - 201 301, India.	PROJECT: 46 LANING OF SALEM - ULUNDURPET SECTION FROM KM 0+313 TO KM 136+670.516 OF NH-79 BAR SCALE : 0 1 2 3 4 5 6 7 8 9 10 1:100 0 2 4 6 8 10 12 14 16 18 20 1:50	FOB - STAIR DETAILS TITLE:- FOB at Km. 70+200	APPROVED BY: 	Drawing No: SU/NH-68/FOB/02
---	---	--	---	---	-------------------------------------	---




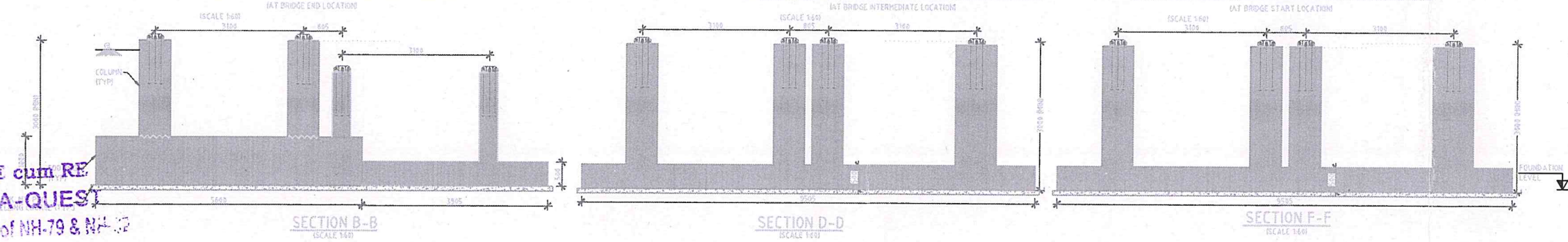
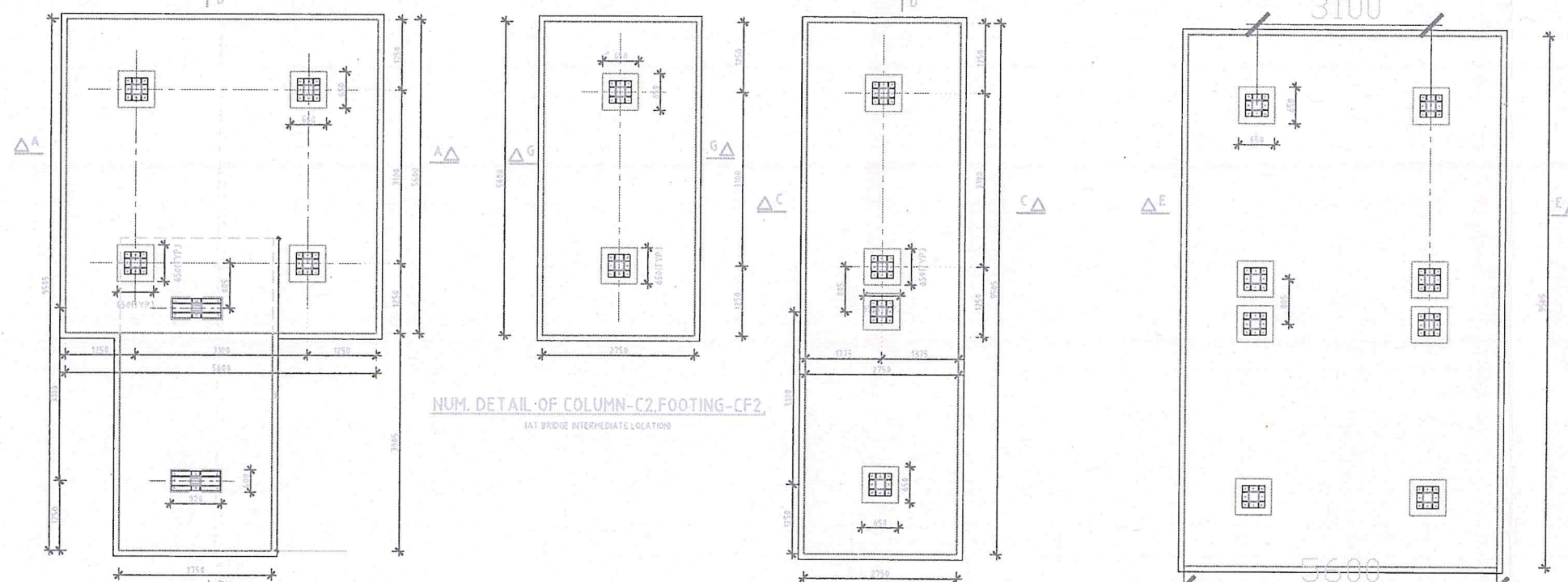
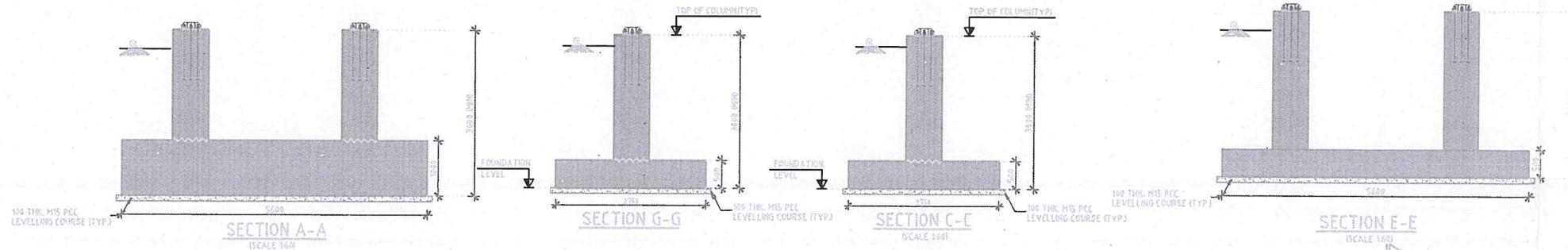
LAYOUT OF COLUMN & FOOTING
(SCALE 1:125)

LAYOUT OF FOOTING DETAIL			
FOOTING TYPE	FOOTING SIZE (L)	FOOTING SIZE (B)	MINIMUM FOUNDING LEVEL (m)
CF1	5600	5600	(-1)162.385
CF2 / CF3 / CF4	5600	2750	(-1)162.385

Ppm
N. Raja, HME cum RE.
M/s. SA INFRA-QUEST
Independent Engineer of NH-79 & NH-32

[Signature]
Team Leader
M/s. SA INFRA - QUEST
Independent Engineer of NH-79 & NH-32

CLIENT:  NATIONAL HIGHWAY AUTHORITY OF INDIA G-5 & G-6 DWARAKA NEW DELHI	CONCESSIONAIRE: SU TOLL ROAD PRIVATE LTD REGD OFF: H BLOCK, 1ST FLOOR, DHIRABHAI, AMBANI KNOWLEDGE CITY, NEVI MIMBAI - 400710.	INDEPENDANT ENGINEER: SA INFRASTRUCTURE CONSULTANT PVT. LTD BY ASSOCIATION WITH QUEST ENGINEERS & CONSULTANTS PVT LTD. 1101B: 11Floor, Tower A-II, Ansal Corporate Park, Plot No:7A/1, Sector-142, Noida - 201 301, India	PROJECT: 4/6 LANE OF SALEM - ULUNDURPET SECTION FROM KM 0+313 TO KM 136+470.516 OF NH-79 BAR SCALE : 0 1 2 3 4 5 6 7 8 9 10 0 2 4 6 8 10 12 14 16 18 20 -1:100 -1:50	FOB - FOOTING LAYOUT TITLE:- FOB at Km. 70+200	APPROVED BY:	Drawing No: SU/NE-68/FOB/03
---	--	---	--	---	--------------	-----------------------------




LEGEND:
C1 TO C4 - COLUMN
CF1 TO CF4 - COMBINED FOOTING

- NOTES:-**
1. ALL DIMENSIONS ARE IN MILLIMETERS AND LEVELS IN METERS UNLESS OTHERWISE SPECIFIED.
 2. ONLY WRITTEN DIMENSIONS SHALL BE FOLLOWED.
 3. GRADE OF CONCRETE FOR COLUMN & FOUNDATION IS M30.
 4. MINIMUM CLEAR COVER TO OUTER MOST REINFORCEMENT IN COLUMN IS 50mm AND FOUNDATION IS 75mm.
 5. REINFORCEMENT SHALL BE OF GRADE Fe550 CONFORMING TO IS 1786.

Team Leader
M/s. SA INFRA - QUEST
Independent Engineer of NH-79 & NH-32

N. Raja, HME cum RE
M/s. SA INFRA-QUEST
Independent Engineer of NH-79 & NH-32

CLIENT:  NATIONAL HIGHWAY AUTHORITY OF INDIA G-5 & G-6 DWARAKA NEW DELHI	CONCESSIONAIRE: SU TOLL ROAD PRIVATE LTD REGD OFF: H BLOCK, 1ST FLOOR, DHIRAU BHAI, AMBANI KNOWLEDGE CITY, NEVI MIMBAI - 400710.	INDEPENDANT ENGINEER: SA INFRASTRUCTURE CONSULTANT PVT. LTD <small>IN ASSOCIATION WITH</small> QUEST ENGINEERS & CONSULTANTS PVT LTD. 1101B: 111Floor, Tower A-II, Ansal Corporate Park, Plot No:7A/1, Sector-142, Noida - 201 301, India	PROJECT: 4/6 LANING OF SALEM - ULUNDURPET SECTION FROM KM 0+313 TO KM 136+670.516 OF NH-79 BAR SCALE : 0 1 2 3 4 5 6 7 8 9 10 -1:100 0 2 4 6 8 10 12 14 16 18 20 -1:50	FOB - FOUNDATION DETAILS TITLE- FOB at Km. 70+200	APPROVED BY:	Drawing No: SUNH-68/FOB/04
---	--	--	---	--	---------------------	-----------------------------------

SCHEDULE OF REINFORCEMENT

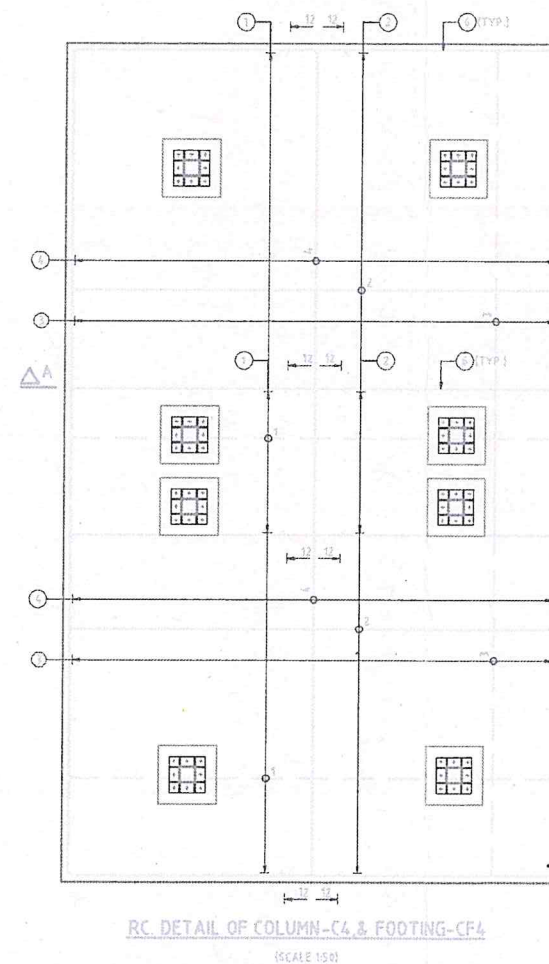
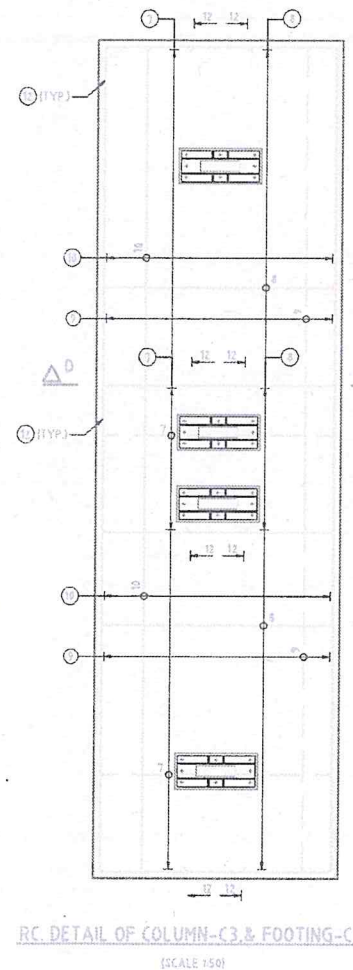
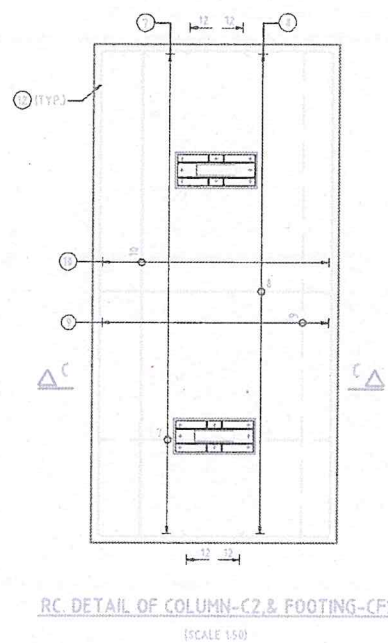
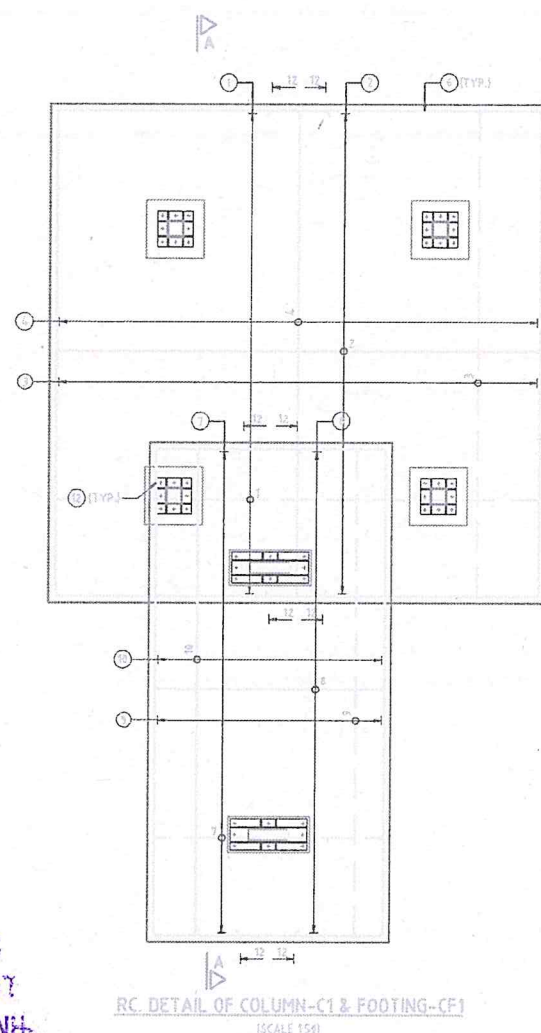
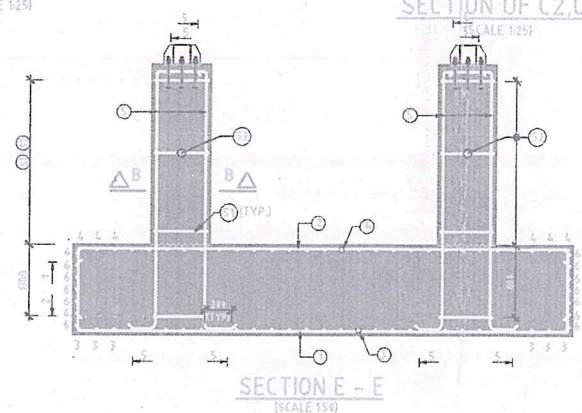
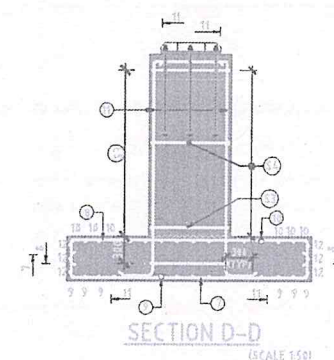
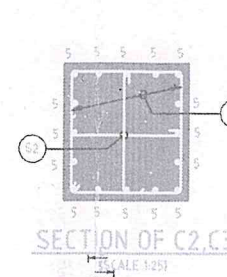
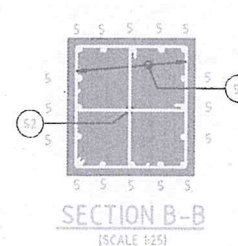
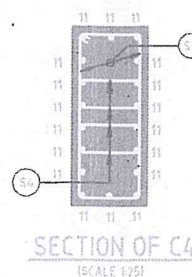
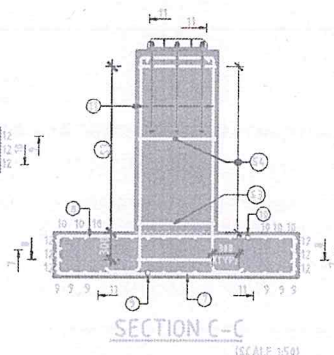
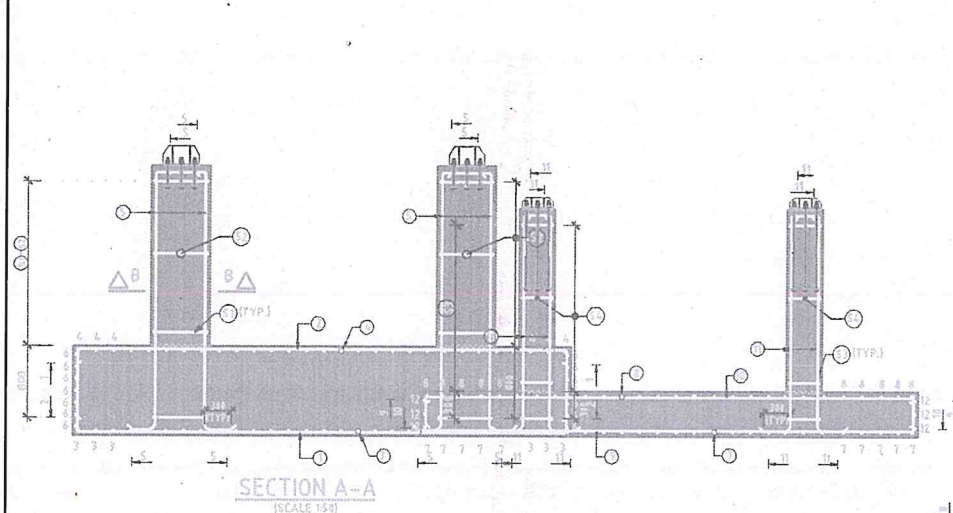
BAR MARK	TYPE & DIA	SHAPE & DIMENSION
○	Y16 AT 150	300 5450 375
○	Y12 AT 150	375 5450 375
○	Y16 AT 150	375 5450 375
○	Y12 AT 150	375 5450 375
○	Y25	500
○	Y18 AT 150	515 2725
○	Y24 AT 125	240 2600 270
○	Y12 AT 150	260 2600 270
○	Y24 AT 125	240 5450 270
○	Y12 AT 150	260 5450 270
○	Y20	300
○	Y18 AT 150	515 1900
○	Y12 AT 150	515 570
○	Y12 AT 150	570
○	Y12 AT 150	320 840
○	Y12 AT 150	840

LEGEND:

———	TOP REINFORCEMENT
———	BOTTOM REINFORCEMENT
———	CONSTRUCTION JOINT


NOTES:

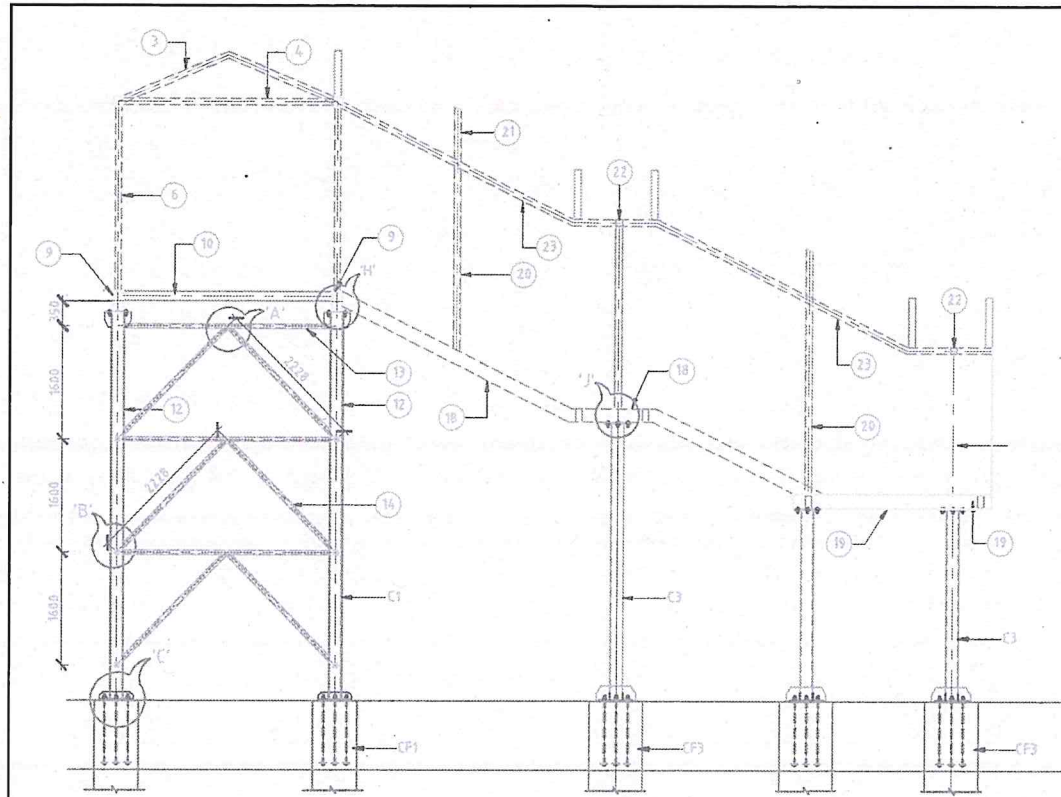
1. ALL DIMENSIONS ARE IN MILLIMETER AND LEVELS ARE IN METRE.
2. ONLY WRITTEN DIMENSION TO BE FOLLOWED.
3. CLEAR COVER TO REINFORCEMENT.
 - A. COLUMN= 50mm
 - B. FOOTING= 75mm
4. REINFORCEMENT SHALL BE OF GRADE Fe550 CONFORMING TO IS 1786
5. DEVELOPMENT LENGTH SHALL BE 44φ
6. LAP LENGTH SHALL BE 1.4x DEVELOPMENT LENGTH



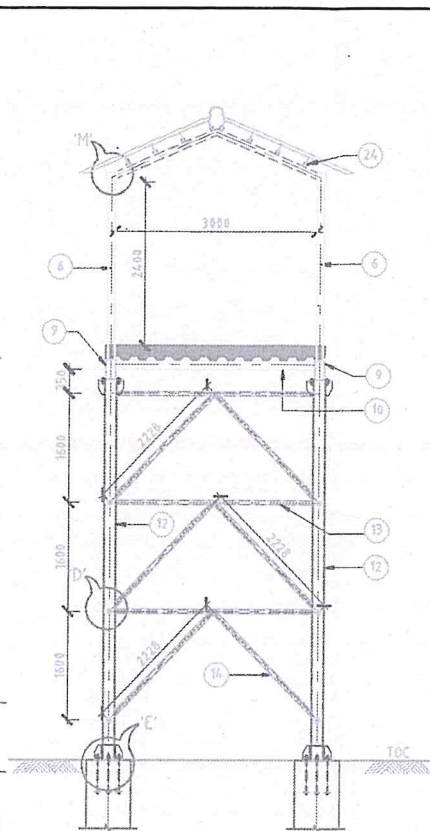
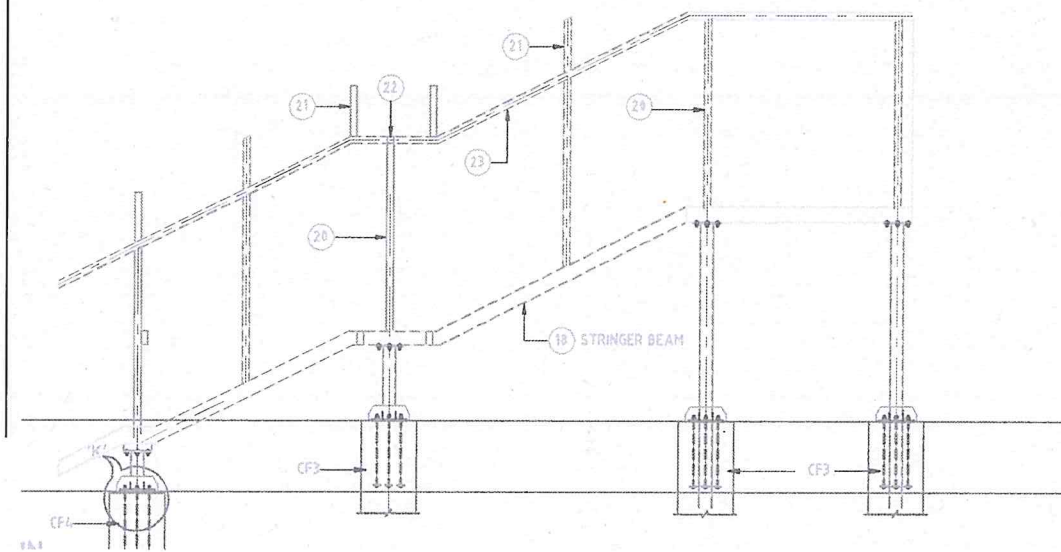
N.Raja, HME cum RE
M/s. SA INFRA-QUEST
Independent Engineer of NH-79 & NH-32

Team Leader
M/s. SA INFRA - QUEST
Independent Engineer of NH-79 & NH-32

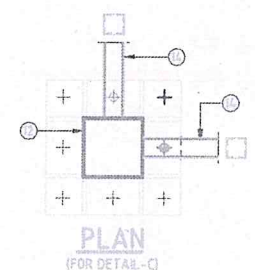
CLIENT:  NATIONAL HIGHWAY AUTHORITY OF INDIA G-5 & G-6 DWARAKA NEW DELHI	CONCESSIONAIRE: SU TOLL ROAD PRIVATE LTD REGD OFF: H BLOCK, 1ST FLOOR, DHIRAU BHAI, AMBANI KNOWLEDGE CITY, NEVI MIMBAI - 400710.	INDEPENDANT ENGINEER: SA INFRASTRUCTURE CONSULTANT PVT. LTD IN ASSOCIATION WITH QUEST ENGINEERS & CONSULTANTS PVT LTD. 1101B: 11Floor, Tower A-II, Ansal Corporate Park, Plot No:7A/1, Sector-142, Noida - 201 301, India	PROJECT: 4/6 LANE OF SALEM - ULUNDURPET SECTION FROM KM 0+313 TO KM 136+070.516 OF NH-79 BAR SCALE : 0 1 2 3 4 5 6 7 8 9 10 0 2 4 6 8 10 12 14 16 18 20 -1:100 -1:50	FOB - FOUNDATION RFT TITLE- FOB at Km. 70+200	APPROVED BY:	Drawing No: SUNH-68/FOB/05
---	--	--	---	--	---------------------	-----------------------------------



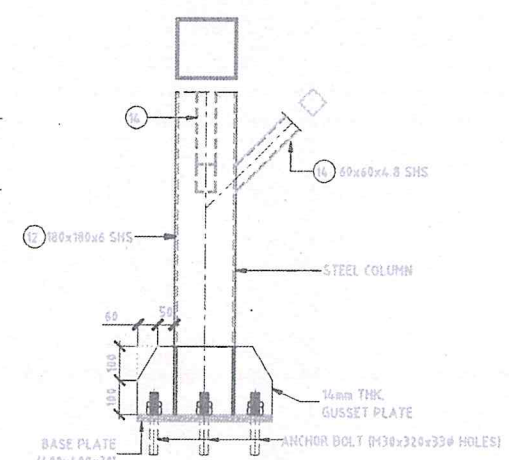
ELEVATION OF STRINGER BEAM & COLUMN
(SCALE 1:75)



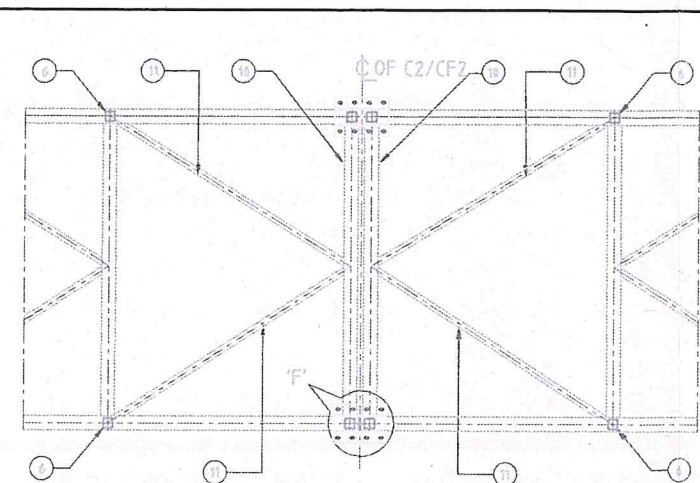
DETAIL AT COLUMN-C2
(SCALE 1:75)



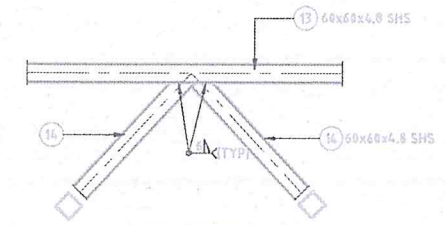
PLAN
(FOR DETAIL-C)



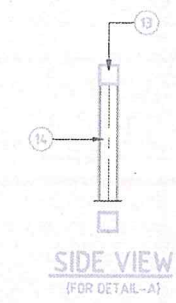
ELEVATION DETAIL-C
(SCALE 1:50)



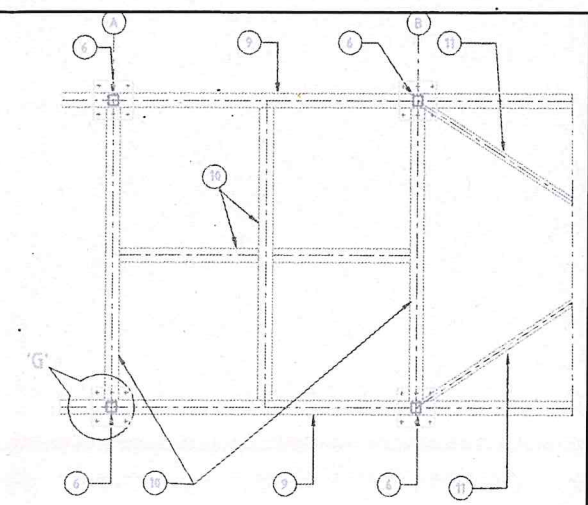
PLAN OF BOTTOM TRUSS ABOVE C2/CF2
(SCALE 1:50)



ELEVATION DETAIL-A
(SCALE 1:50)



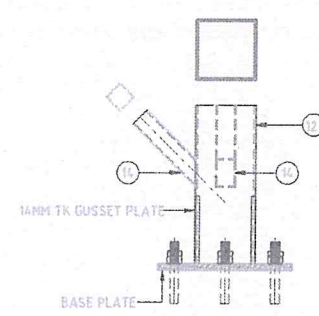
SIDE VIEW
(FOR DETAIL-A)



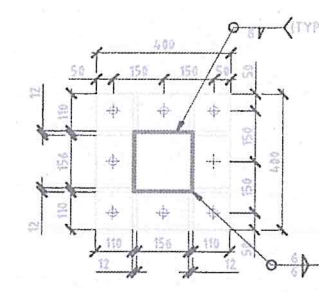
PLAN OF BOTTOM TRUSS ABOVE C1/CF1
(STRINGER BEAM NOT SHOWN FOR CLARITY)
(SCALE 1:50)

NOTES:

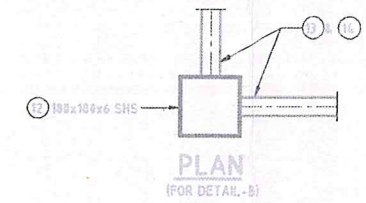
1. ALL DIMENSIONS ARE IN MM AND LEVELS ARE IN METERS.
2. ONLY WRITTEN DIMENSIONS SHALL BE FOLLOWED.
3. THE CUT LENGTH, SHAPE AND SIZE OF THE MEMBER AND GUSSET PLATE ARE TO BE VERIFIED BY FULL SCALE LAYOUT AT FABRICATION YARD.
4. ALL WELDS ARE 8mm FILLET WELD UNLESS OTHERWISE SPECIFIED.
5. BOLTED CONNECTION OF STRUCTURAL JOINT USING HIGH STRENGTH BEARING TYPE AND FRICTION GRIP TYPE BOLTS SHALL COMPLY WITH REQUIREMENT OF IS:4000.
6. IN MAKING SITE JOINTS BOLTS SHOULD BE DIPPED IN THICK RED LEAD PAINT BEFORE INSERTION IN THE HOLES.
7. NECESSARY JIGS AND FIXTURES SHOULD BE USED FOR WELDING VARIOUS MEMBERS OF FOOT-OVER-BRIDGE TO AVOID DISTORTION AS PER SPECIFICATION IS:9595.
8. ALL OPEN ENDS OF HOLLOW SECTIONS AFTER FABRICATION, IF ANY, SHOULD BE SEALED TO PREVENT CORROSION OF INTERNAL SURFACES BY WELDING A 6mm THK PLATE.
9. ALL STRUCTURAL STEEL SECTIONS SHALL BE HOT ROLLED SECTION (HRS) AND COMPLY WITH FOLLOWING REQUIREMENT:
i) SHS & RHS - GRADE YS1 310 CONFORMING TO IS 4923:1997
10. FABRICATION AND ERECTION SHALL BE FOLLOWED AS PER IS 800:1984.
11. PAINTING OF ALL STRUCTURAL STEEL SHALL CONFORM TO IS: 5905-1989 AS MENTIONED IN GENERAL NOTES.
12. ALL STRUCTURAL STEEL MEMBERS SHOULD BE TREATED WITH PRIMER AND ANTI-CORROSIVE PAINTS/COATING AS PER APPLICABLE SPECIFICATION.
13. IN ACCORDANCE WITH CLAUSE 6.2.2 OF IS 816:1969, THE SIZE OF FILLET WELD SHALL NOT BE LESS THAN 3mm.



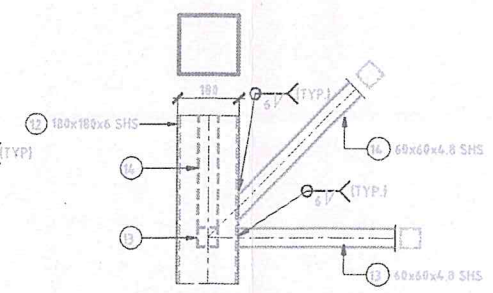
SIDE VIEW
(FOR DETAIL-C)



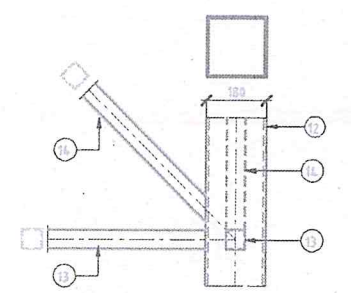
DETAIL OF BASE PLATE
(FOR DETAIL-C)



PLAN
(FOR DETAIL-B)




ELEVATION DETAIL-B
(SCALE 1:50)

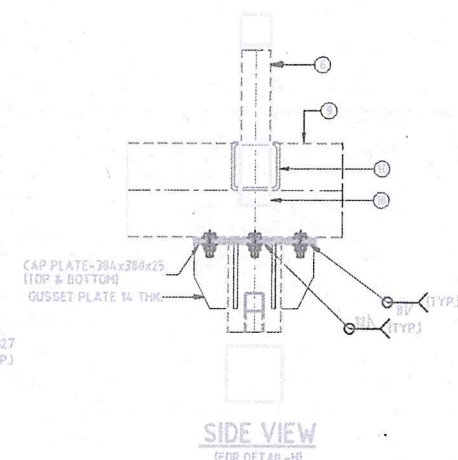
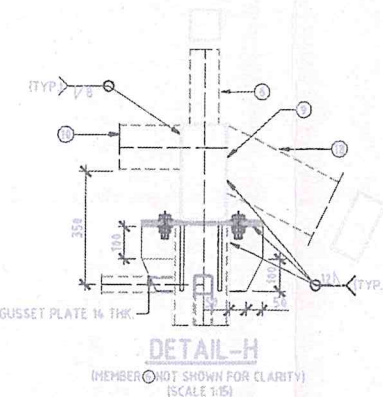
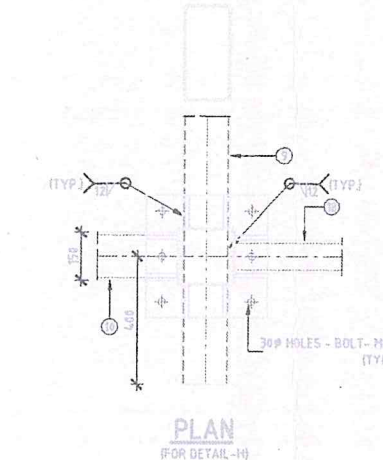
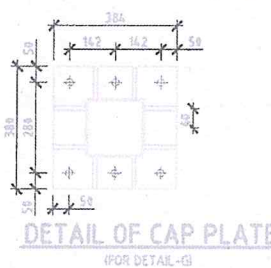
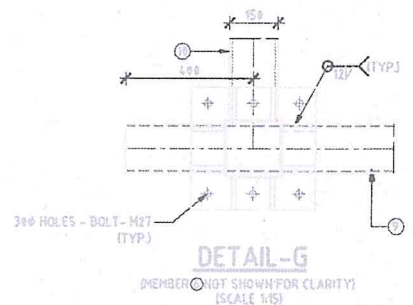
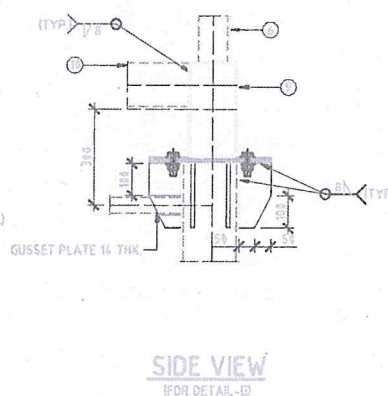
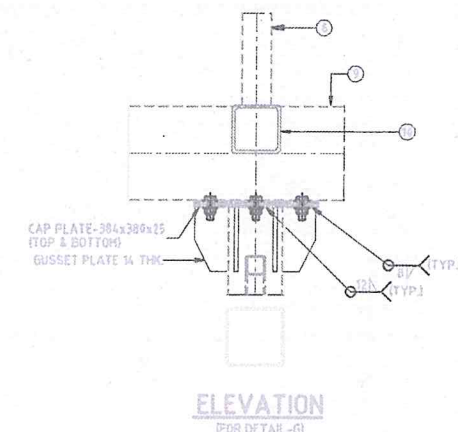
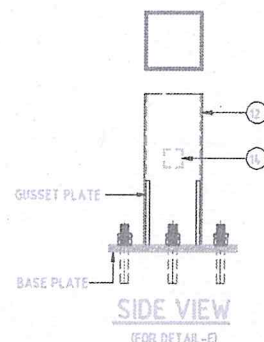
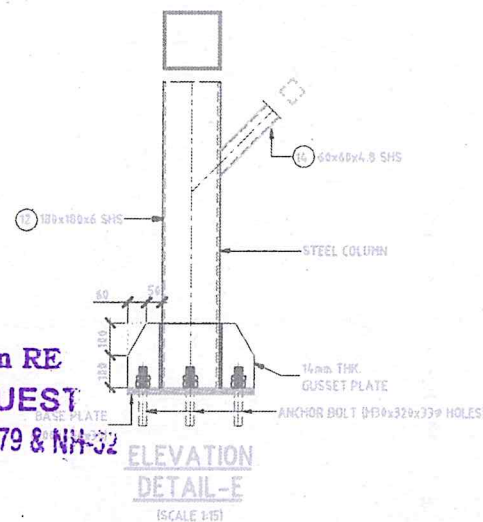
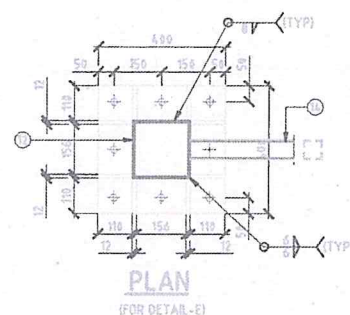
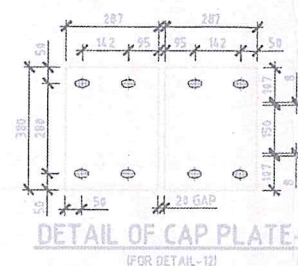
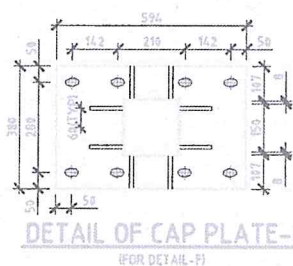
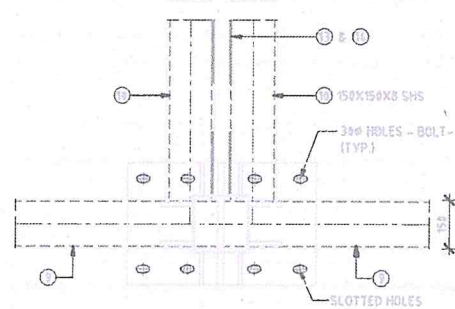
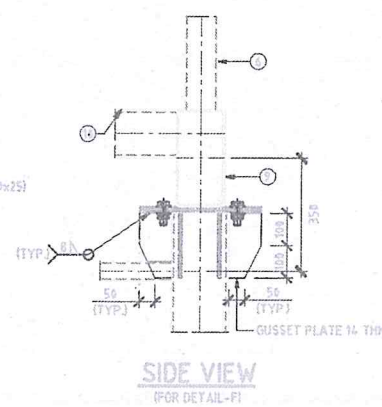
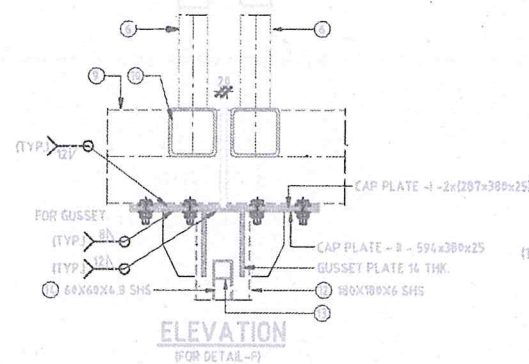
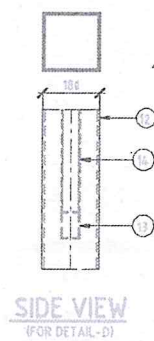
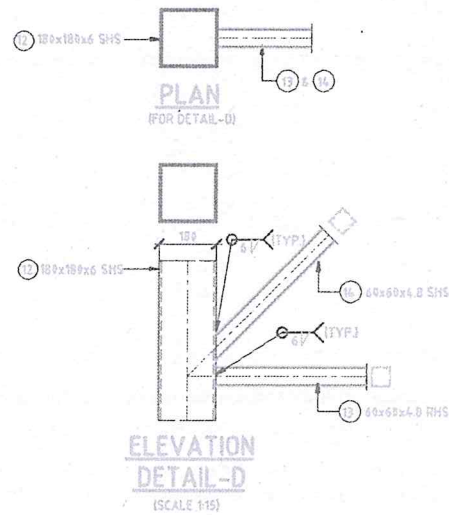


SIDE VIEW
(FOR DETAIL-B)



N. Raja, HME cum RE
M/s. SA INFRA-QUEST
Independent Engineer of NH-79 & NH-32

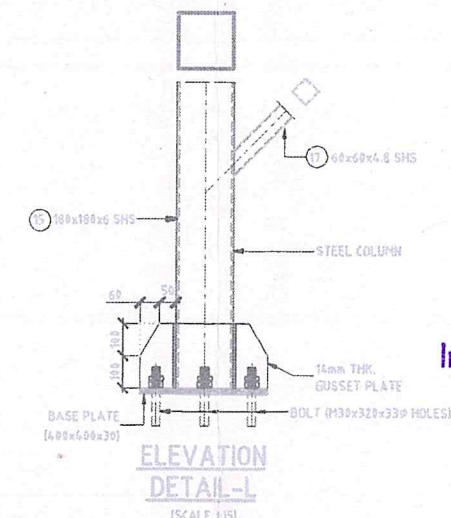
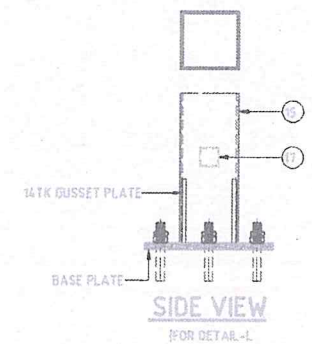
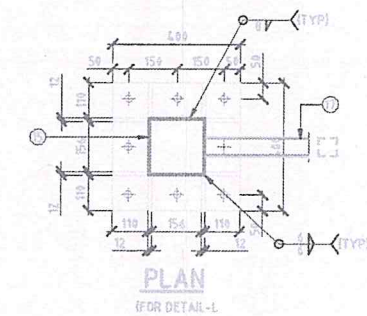
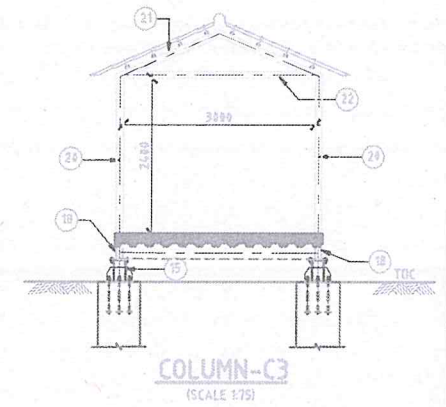
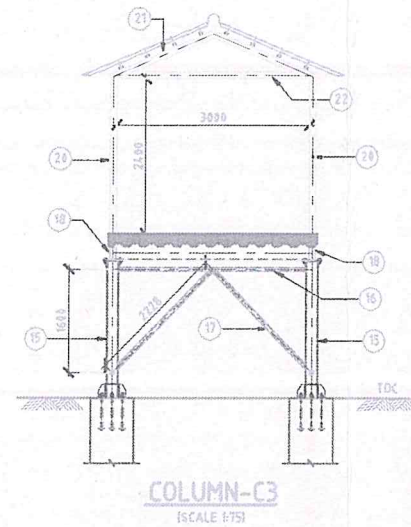
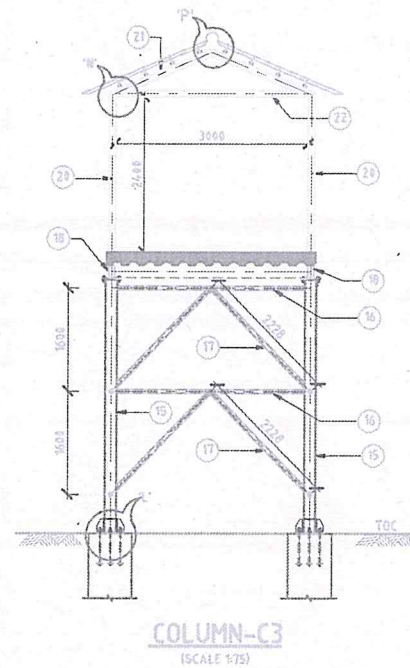
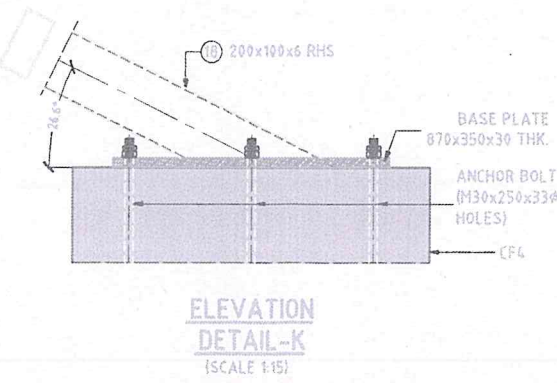
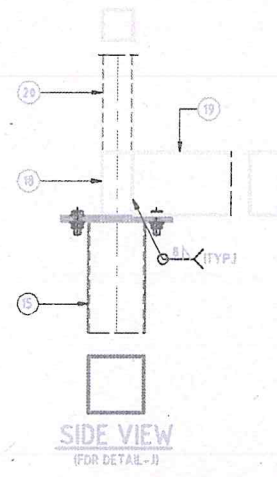
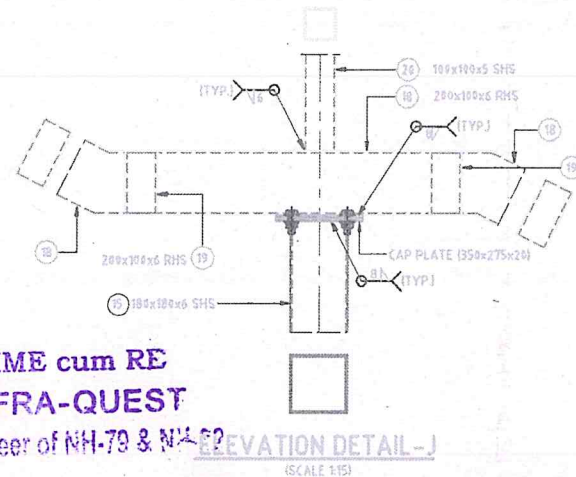
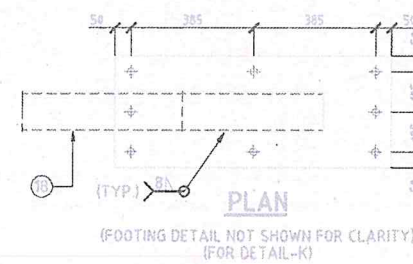
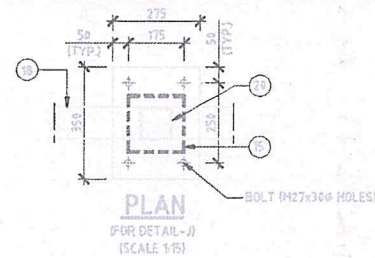
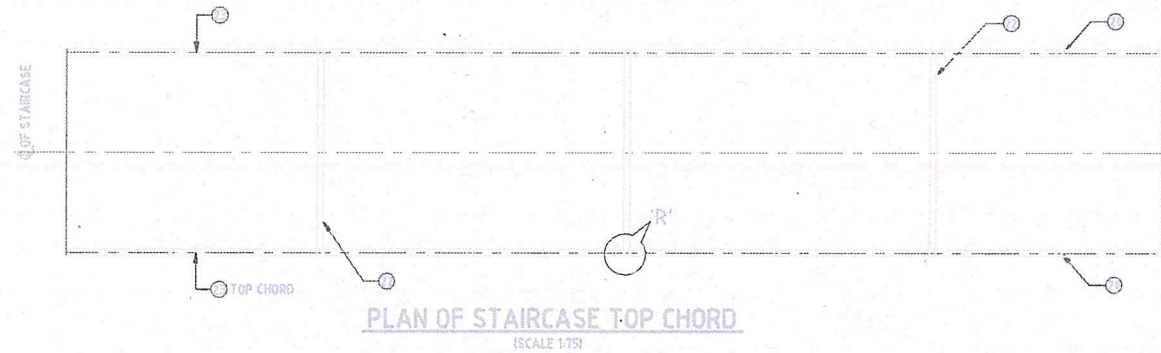
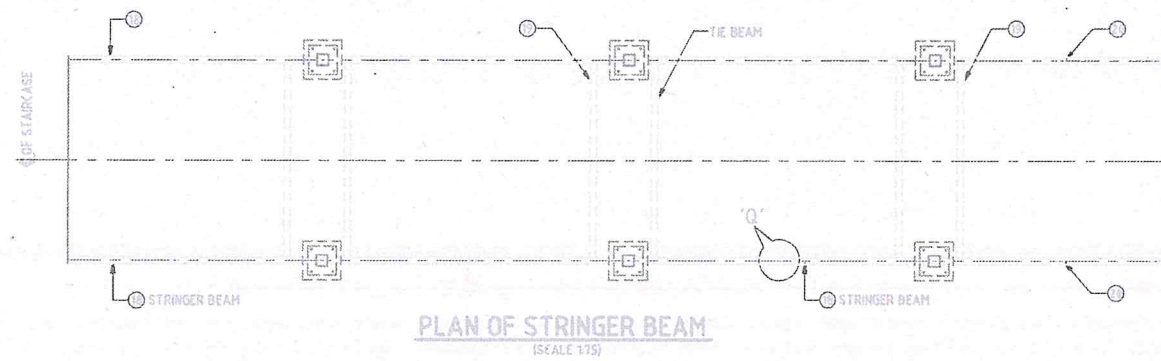
Team Leader
M/s. SA INFRA - QUEST
Independent Engineer of NH-79 & NH-32

CLIENT:  NATIONAL HIGHWAY AUTHORITY OF INDIA G-5 & G-6 DWARAKA NEW DELHI	CONCESSIONAIRE: SU TOLL ROAD PRIVATE LTD REGD OFF: H BLOCK, 1ST FLOOR, DHIRABHAI AMBANI KNOWLEDGE CITY, NEVI MIMBAI - 400710.	INDEPENDANT ENGINEER: SA INFRASTRUCTURE CONSULTANT PVT. LTD IN ASSOCIATION WITH QUEST ENGINEERS & CONSULTANTS PVT LTD. 1101B: 11Floor, Tower A-II, Ansal Corporate Park, Plot No:7A/1, Sector-142, Noida - 201 301, India	PROJECT: 4/6 LANING OF SALEM - ULUNDURPET SECTION FROM KM 0+313 TO KM 136+670.516 OF NH-79 BAR SCALE : 0 1 2 3 4 5 6 7 8 9 10 -1:100 0 2 4 6 8 10 12 14 16 18 20 -1:50	FOB: ELEVATION OF STRANGER TITLE:- FOB at Km. 70+200	APPROVED BY :	Drawing No: SU/NH-68/FOB/06
---	--	--	---	---	----------------------	------------------------------------




Team Leader
M/s. SA INFRA-QUEST
Independent Engineer of NH-79 & NH-37

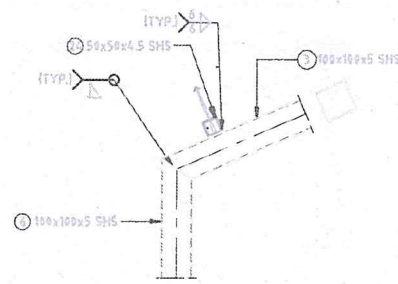
CLIENT:  NATIONAL HIGHWAY AUTHORITY OF INDIA G-5 & G-6 DWARAKA NEW DELHI	CONCESSIONAIRE: SU TOLL ROAD PRIVATE LTD REGD OFF: H BLOCK, 1ST FLOOR, DHIRUBHAI AMBANI KNOWLEDGE CITY, NEVI MIMBAI - 400710.	INDEPENDANT ENGINEER: SA INFRASTRUCTURES CONSULTANT PVT. LTD IN ASSOCIATION WITH QUEST ENGINEERS & CONSULTANTS PVT LTD. 1101B: 11Floor, Tower A-II, Aamal Corporate Park, Plot No:7A/1, Sector-142, Noida - 201 301, India	PROJECT: 4/6 LANING OF SALEM - ULUNDURPET SECTION FROM KM 0+313 TO KM 136+670.516 OF NH-79 BAR SCALE : 0 1 2 3 4 5 6 7 8 9 10 -1:100 0 2 4 6 8 10 12 14 16 18 20 -1:50	FOB: DETAILS TITLE- FOB at Km. 70+200	APPROVED BY: 	Drawing No: SU/NH-68/FOB/07
---	---	---	---	--	--	------------------------------------



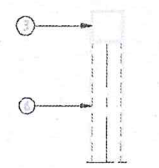
N. Raja, HME cum RE
M/s. SA INFRA-QUEST
Independent Engineer of NH-79 & NH-32

Team Leader
M/s. SA INFRA - QUEST
Independent Engineer of NH-79 & NH-32

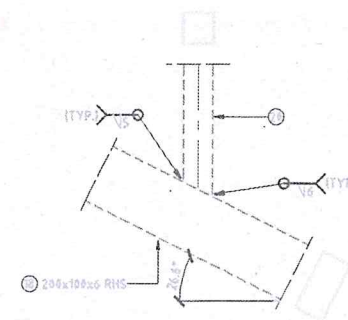
CLIENT:  NATIONAL HIGHWAY AUTHORITY OF INDIA G-5 & G-6 DWARAKA NEW DELHI	CONCESSIONAIRE: SU TOLL ROAD PRIVATE LTD REGD OFF: H BLOCK, 1ST FLOOR, DHIRAU BHAI, AMBANI KNOWLEDGE CITY, NEVI MIMBAI - 400710.	INDEPENDANT ENGINEER: SA INFRASTRUCTURES CONSULTANT PVT. LTD <small>IN ASSOCIATION WITH</small> QUEST ENGINEERS & CONSULTANTS PVT LTD. 1101B: 11Floor, Tower A-II, Amal Corporate Park, Plot No:7A/1, Sector-142, Noida - 201 301, India	PROJECT: 4/6 LANING OF SALEM - ULUNDURPET SECTION FROM KM 0+313 TO KM 136+670.516 OF NH-79 BAR SCALE : 0 1 2 3 4 5 6 7 8 9 10 -1:100 0 2 4 6 8 10 12 14 16 18 20 -1:150	FOB: DETAILS TITLE:- FOB at Km. 70+200	APPROVED BY:	Drawing No: SU/NH-68/FOB/08
---	---	---	--	---	---------------------	------------------------------------



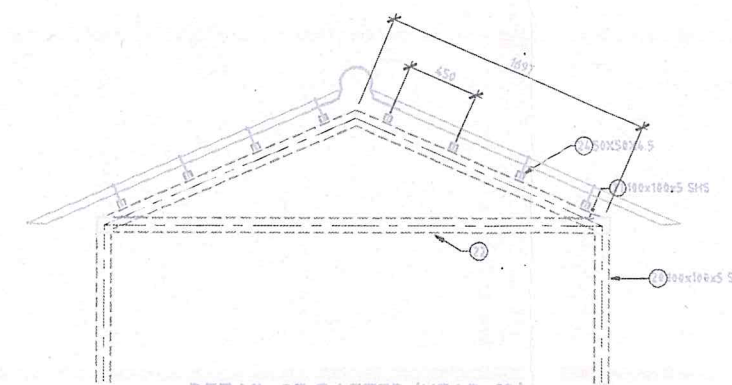
ELEVATION
DETAIL-M
(SCALE 1:15)



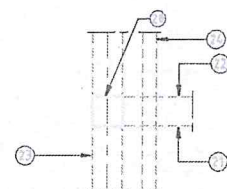
SIDE VIEW
(FOR DETAIL-M)



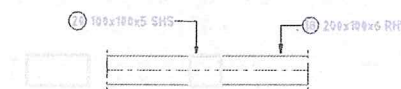
ELEVATION
(FOR DETAIL-Q)



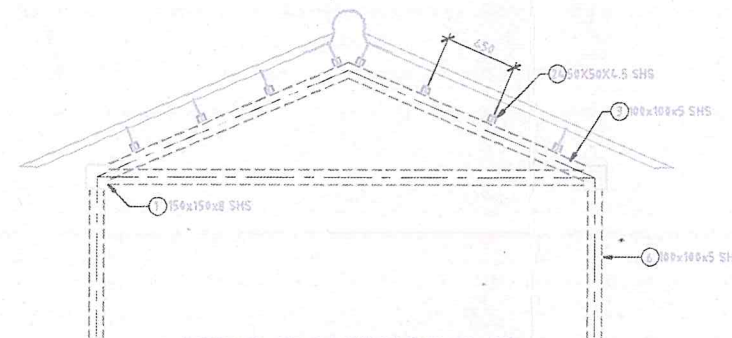
DETAIL OF RAFTER (NEAR C3)
(AT SUPPORT BRIDGE & STAIRCASE LOCATION)
(SCALE 1:30)



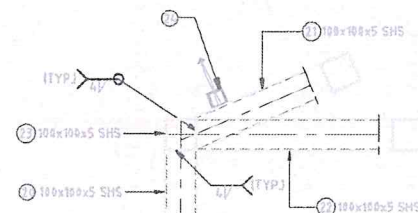
PLAN
(FOR DETAIL-N)
(SCALE 1:15)



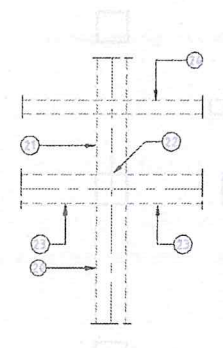
DETAIL-Q
(SCALE 1:15)



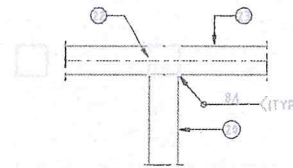
DETAIL OF RAFTER (NEAR C1)
(AT SUPPORT BRIDGE LOCATION)
(SCALE 1:30)



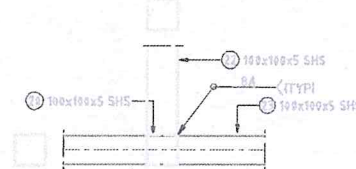
ELEVATION
DETAIL-N
(SCALE 1:15)



SIDE VIEW
(FOR DETAIL-N)



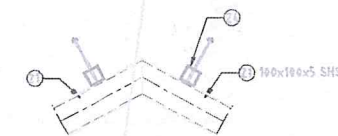
ELEVATION
(FOR DETAIL-R)



DETAIL-R
(SCALE 1:15)




PLAN
(FOR DETAIL-P)

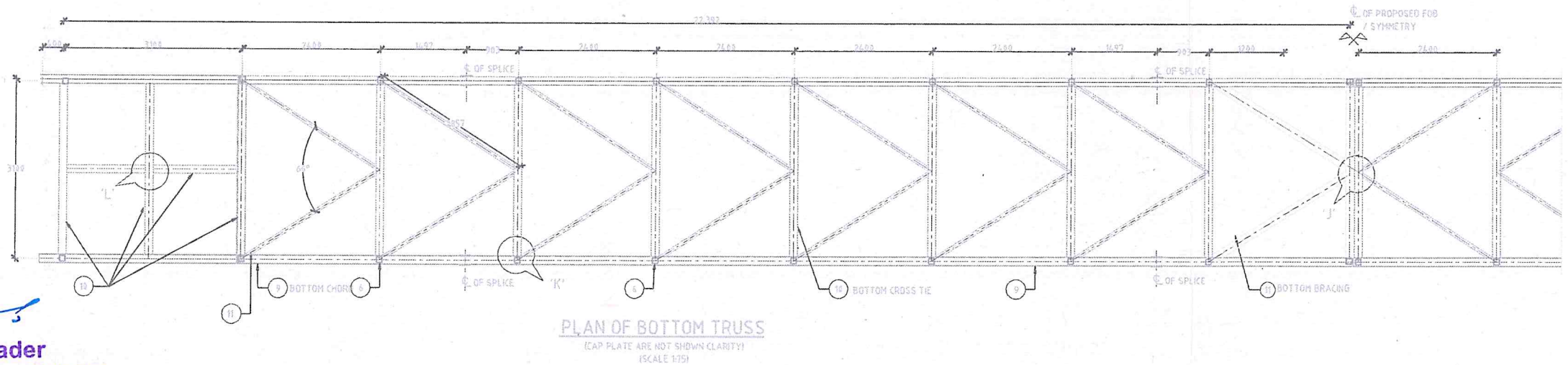
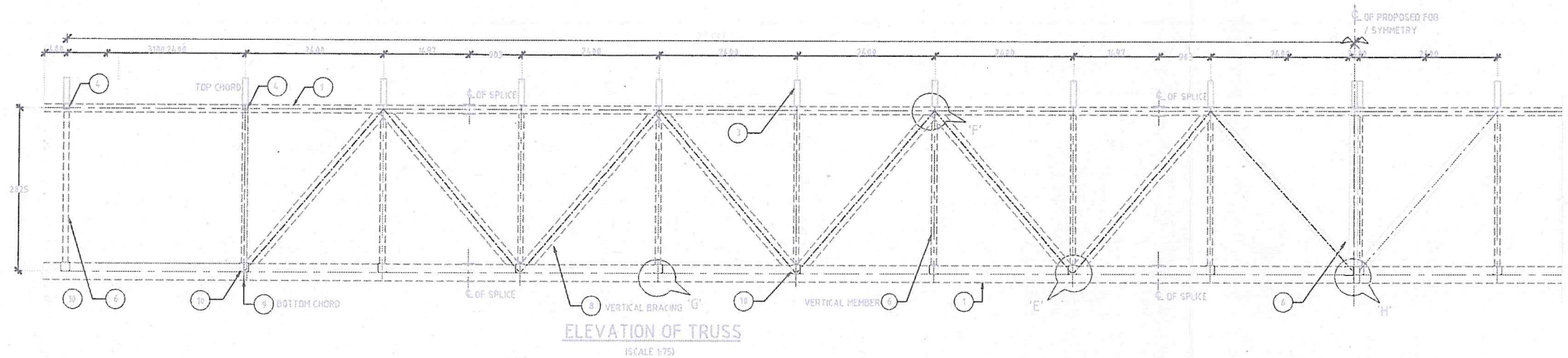
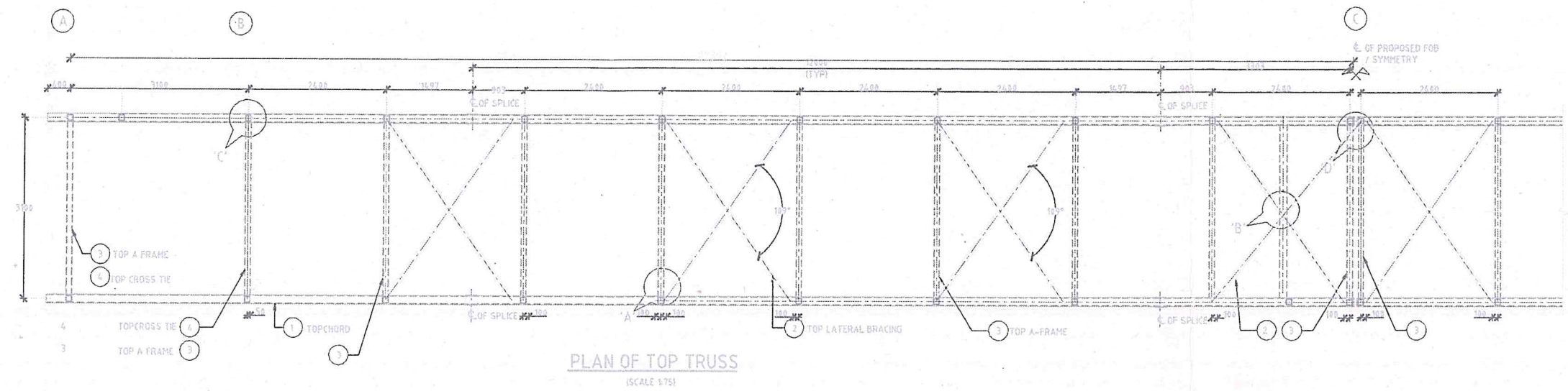


ELEVATION
DETAIL-P
(SCALE 1:15)

N.Raja, HME cum RE
M/s. SA INFRA-QUEST
Independent Engineer of NH-79 & NH-32


Team Leader
M/s. SA INFRA - QUEST
Independent Engineer of NH-79 & NH-32

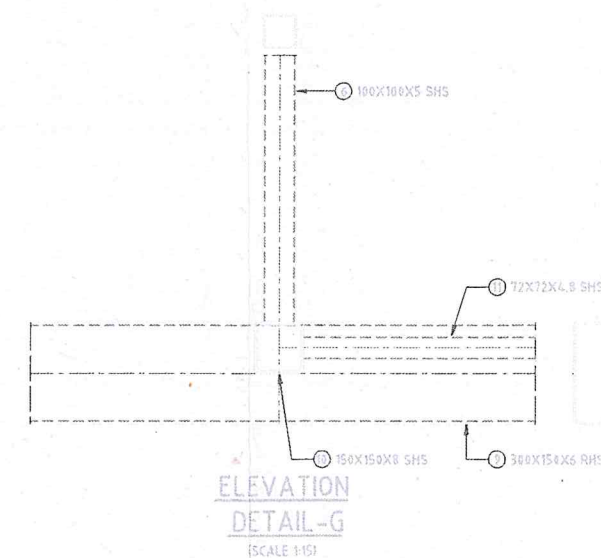
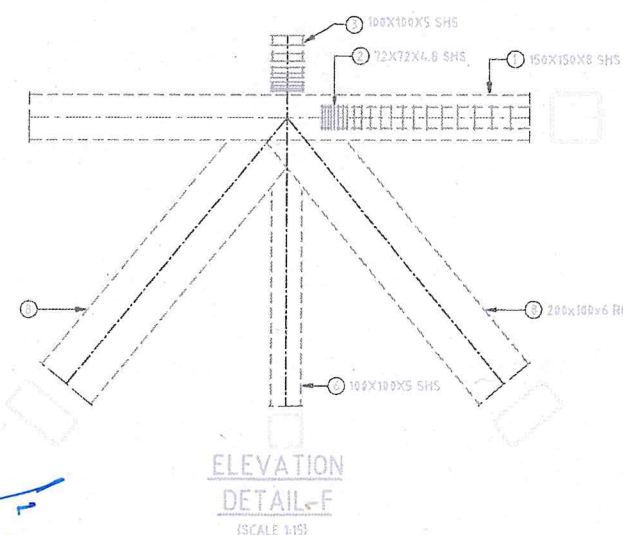
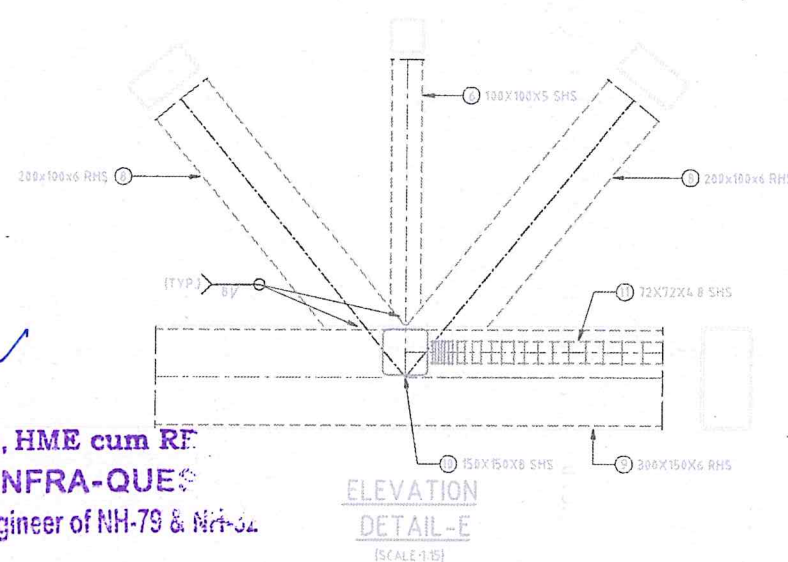
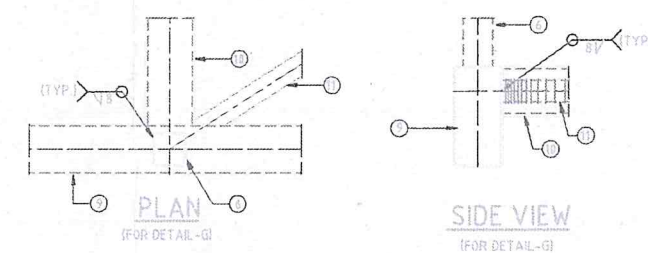
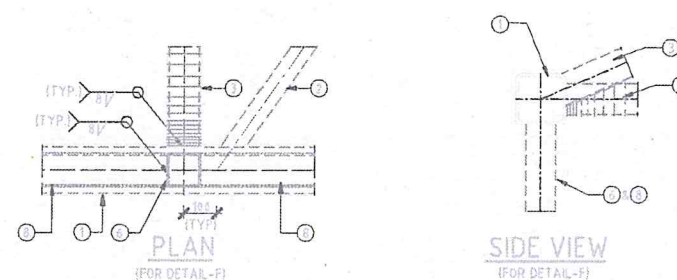
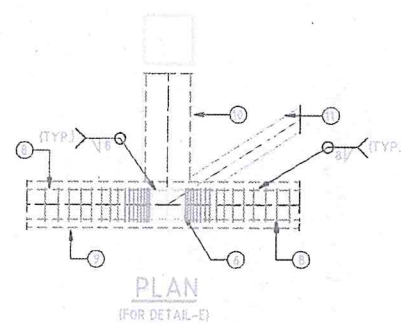
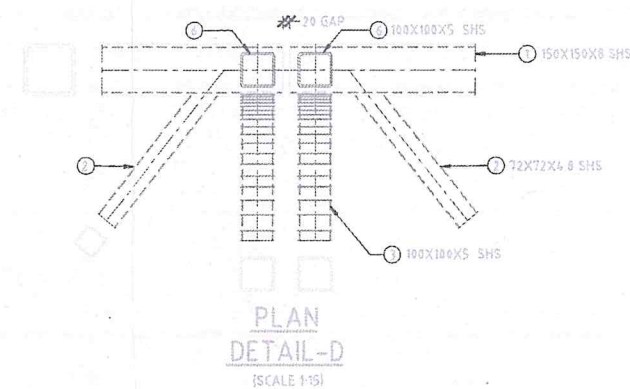
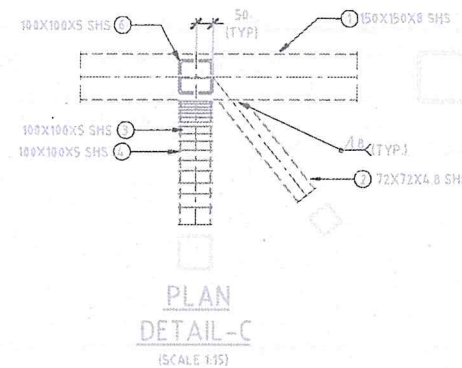
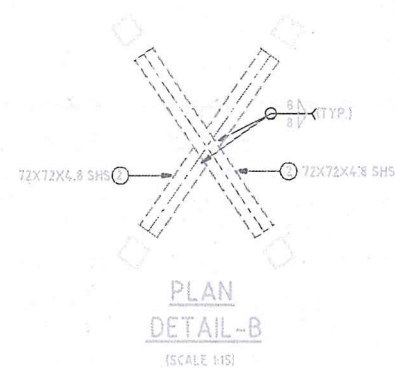
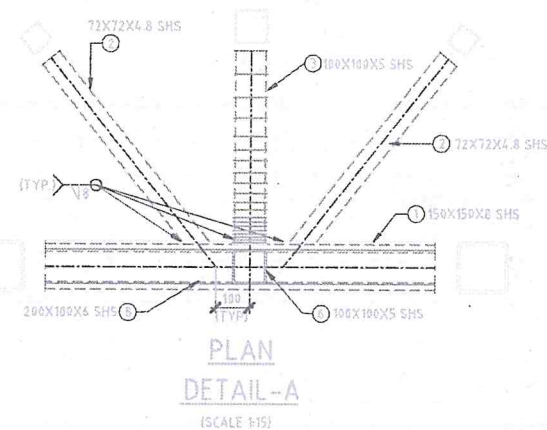
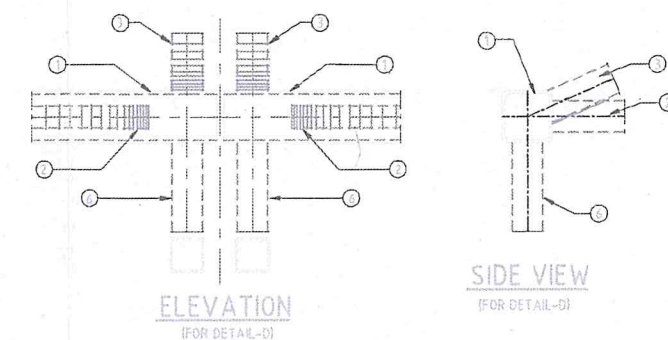
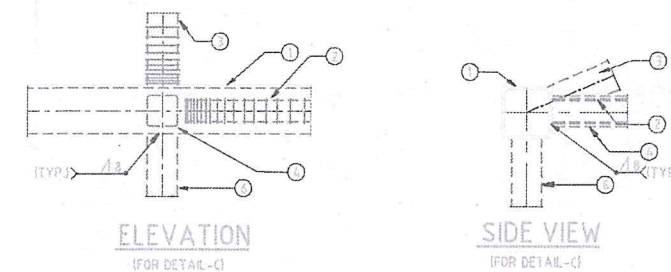
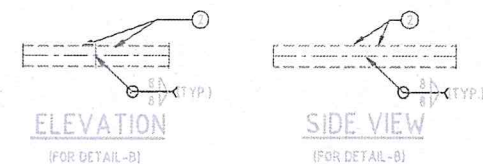
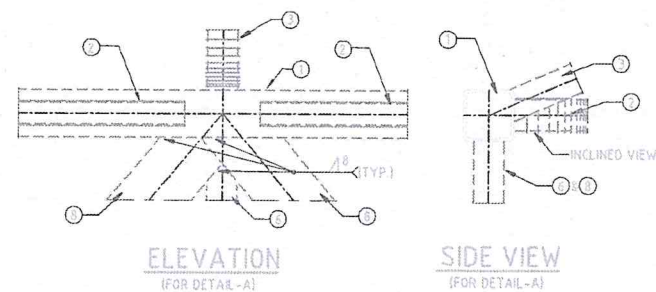
CLIENT:  NATIONAL HIGHWAY AUTHORITY OF INDIA G-5 & G-6 DWARAKA NEW DELHI	CONCESSIONAIRE: SU TOLL ROAD PRIVATE LTD REGD OFF: H BLOCK, 1ST FLOOR, DHIRABHAI AMBANI KNOWLEDGE CITY, NEVI MIMBAI - 400710.	INDEPENDANT ENGINEER: SA INFRASTRUCTURE CONSULTANT PVT. LTD IN ASSOCIATION WITH QUEST ENGINEERS & CONSULTANTS PVT LTD. 1101B: 11Floor, Tower A-II, Ansal Corporate Park, Plot No:7A/1, Sector-142, Noida - 201 301, India	PROJECT: 4/6 LANING OF SALEM - ULUNDURPET SECTION FROM KM 0+313 TO KM 136+070.516 OF NH-79 BAR SCALE : 0 1 2 3 4 5 6 7 8 9 10 -1:100 0 2 4 6 8 10 12 14 16 18 20 -1:50	FOB: DETAILS TITLE- FOB at Km. 70+200	APPROVED BY:	Drawing No: SU/NH-68/FOB/09
---	---	---	--	--	--------------	-----------------------------



N. Raja, HME cum RE
M/s. SA INFRA-QUEST
 Independent Engineer of NH-79 & NH-32


Team Leader
M/s. SA INFRA - QUEST
 Independent Engineer of NH-79 & NH-32

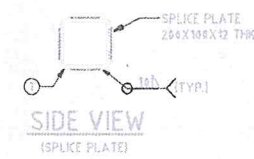
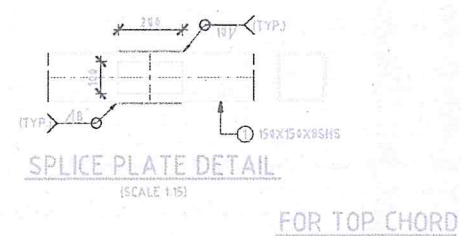
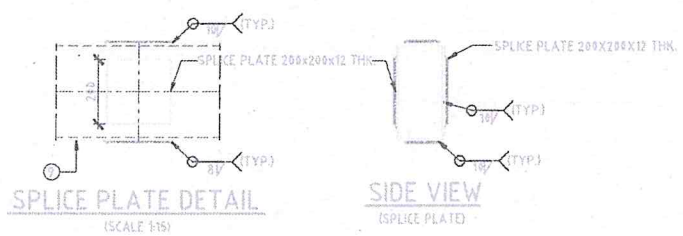
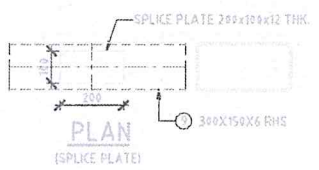
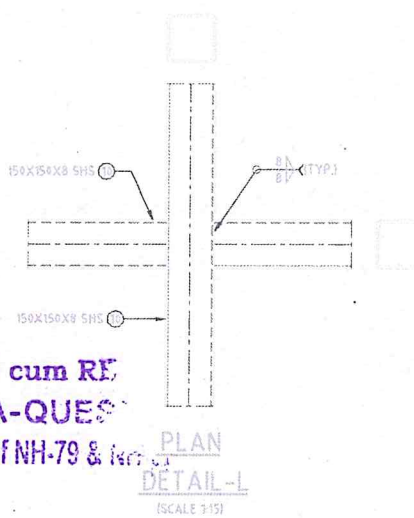
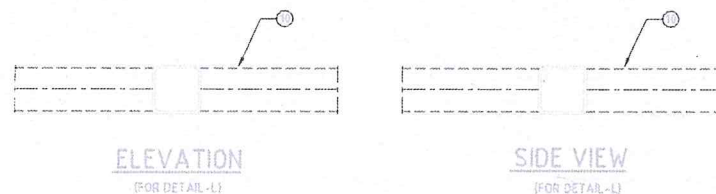
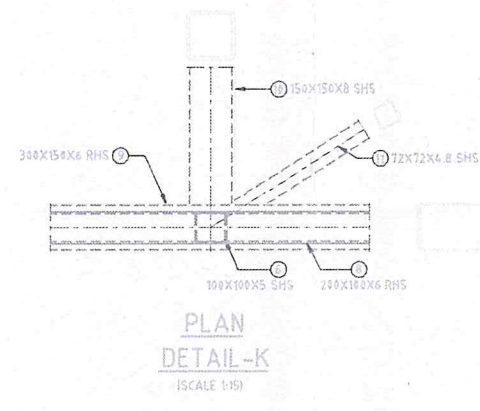
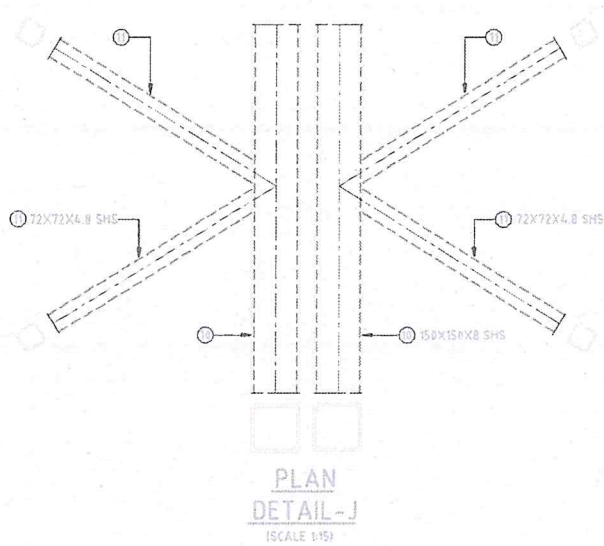
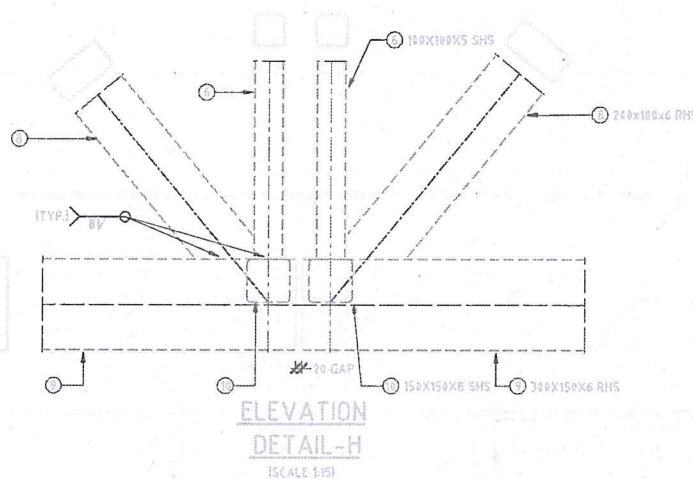
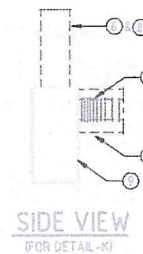
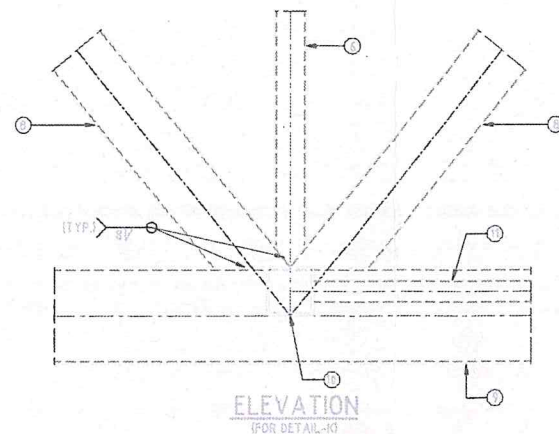
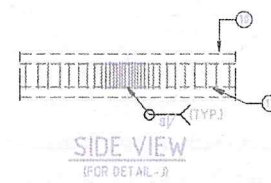
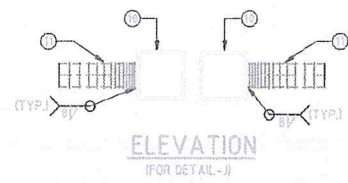
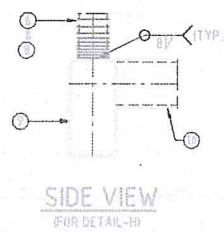
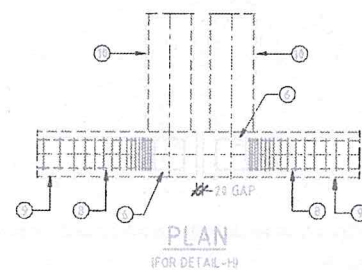
CLIENT:  NATIONAL HIGHWAY AUTHORITY OF INDIA G-5 & G-6 DWARAKA NEW DELHI	CONCESSIONAIRE: SU TOLL ROAD PRIVATE LTD REGD OFF: H BLOCK, 1ST FLOOR, DHIRAU BHAI, AMBANI KNOWLEDGE CITY, NEVI MIMBAI - 400710.	INDEPENDANT ENGINEER: SA INFRASTRUCTURE CONSULTANT PVT. LTD BY ASSOCIATION WITH QUEST ENGINEERS & CONSULTANTS PVT LTD. 1101B: 11Floor, Tower A-II, Asmi Composite Park, Plot No:7A/1, Sector-142, Noida - 201 301, India	PROJECT: 4/6 LANING OF SALEM - ULUNDURPET SECTION FROM KM 0+313 TO KM 136+670.516 OF NH-79 BAR SCALE : 0 1 2 3 4 5 6 7 8 9 10 -1:100 0 2 4 6 8 10 12 14 16 18 20 -1:50	FOB: DETAILS OF TRUSSES TITLE- FOB at Km. 70+200	APPROVED BY:	Drawing No: SU/NH-68/FOB/10
---	--	---	---	---	---------------------	------------------------------------



N. Raja, HME cum RE
M/s. SA INFRA-QUEST
Independent Engineer of NH-79 & NH-32

Team Leader
M/s. SA INFRA - QUEST
Independent Engineer of NH-79 & NH-32

CLIENT:  NATIONAL HIGHWAY AUTHORITY OF INDIA G-5 & G-6 DWARAKA NEW DELHI	CONCESSIONAIRE: SU TOLL ROAD PRIVATE LTD REGD OFF: H BLOCK, 1ST FLOOR, DHIRAOBHAI, AMBANI KNOWLEDGE CITY, NEVI MUMBAI - 400710.	INDEPENDANT ENGINEER: SA INFRASTRUCTURE CONSULTANT PVT. LTD BY AMBITION WITH QUEST ENGINEERS & CONSULTANTS PVT LTD. 1101B: 11Floor, Tower A-II, Ansal Corporate Park, Plot No:7A/1, Sector-142, Noida - 201 301, India	PROJECT: 4/6 LANING OF SALEM - ULUNDURPET SECTION FROM KM 0+313 TO KM 136+670.516 OF NH-79 BAR SCALE : 0 1 2 3 4 5 6 7 8 9 10 -1:100 0 2 4 6 8 10 12 14 16 18 20 -1:50	FOB: DETAILS OF TRUSSES TITLE:- FOB at Km. 70+200	APPROVED BY :	Drawing No: SU/NH-68/FOB/11
---	---	---	---	--	----------------------	------------------------------------



Team Leader
M/s. SA INFRA - QUEST
Independent Engineer of NH-79 & NH-32

N.Raja, HME cum RE
M/s. SA INFRA-QUEST

CLIENT:
NATIONAL HIGHWAY AUTHORITY OF INDIA
G-5 & G-6 DWARAKA
NEW DELHI

CONCESSIONAIRE:
SU TOLL ROAD PRIVATE LTD
REGD OFF: H BLOCK, 1ST FLOOR,
DHIRAUHAI, AMBANI KNOWLEDGE CITY,
NEVI MIMBAI - 400710.

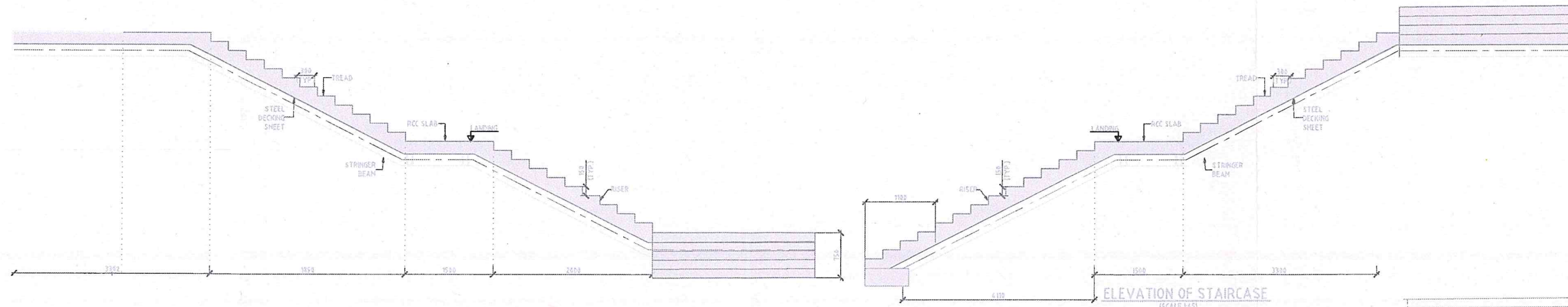
INDEPENDANT ENGINEER:
SA INFRASTRUCTURE CONSULTANT PVT. LTD
BY ASSOCIATION WITH
QUEST ENGINEERS & CONSULTANTS PVT LTD.
1101B: 11Floor, Tower A-II, Ansal Corporate Park,
Plot No:7A/1, Sector-142,
Noida - 201 301, India

PROJECT:
46 LANING OF SALEM - ULUNDURPET SECTION FROM KM 0+313 TO
KM 136+670.516 OF NH-79
BAR SCALE : 0 1 2 3 4 5 6 7 8 9 10 -1:100
0 2 4 6 8 10 12 14 16 18 20 -1:50

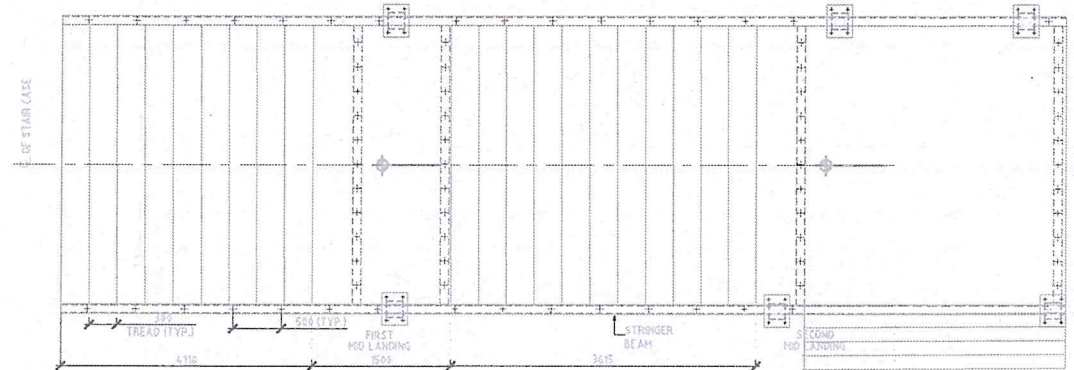
FOB: DETAILS OF TRUSSES
TITLE:- FOB at Km. 70+200

APPROVED BY:

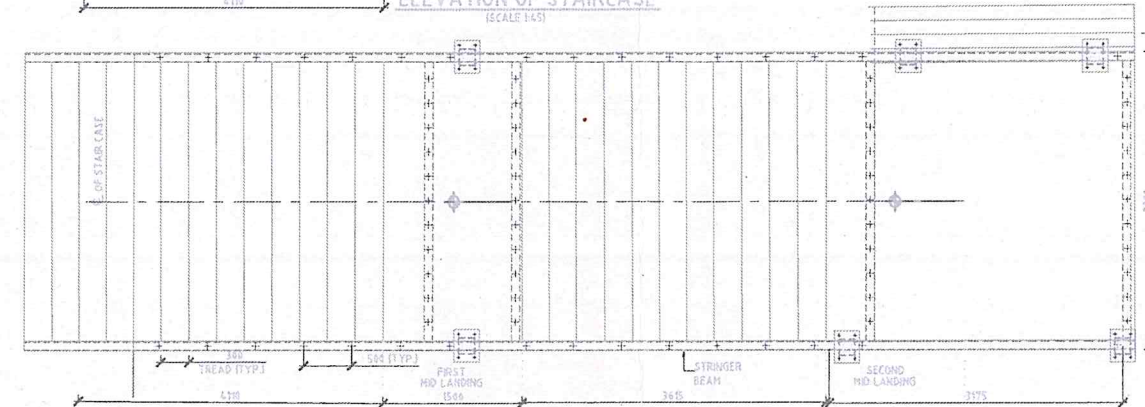
Drawing No: SUNH-68/FOB12



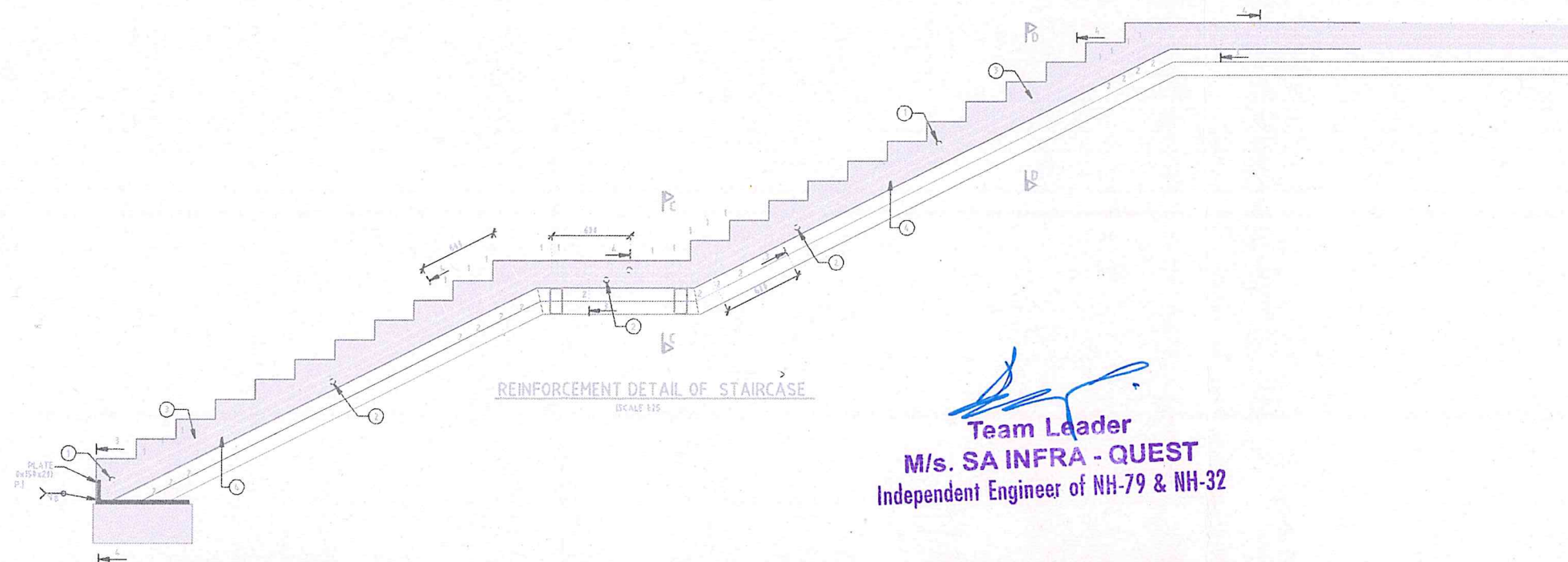
ELEVATION OF STAIRCASE
(SCALE 1:45)



PLAN
(SCALE 1:45)




PLAN
(SCALE 1:45)

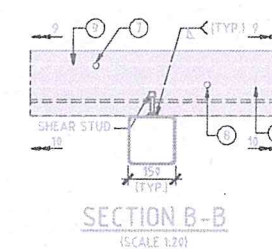
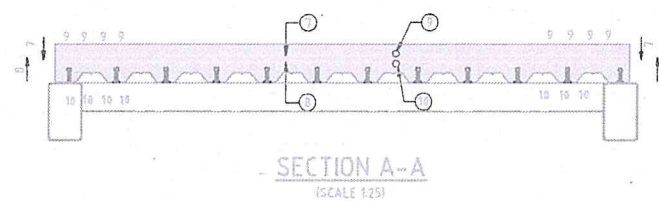
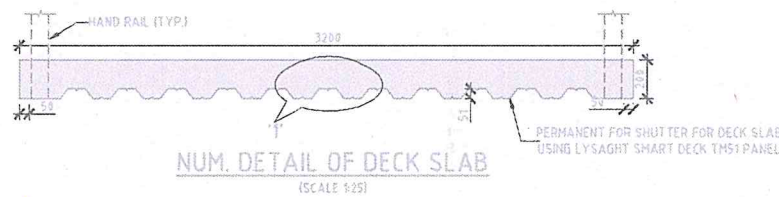
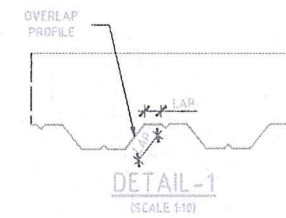
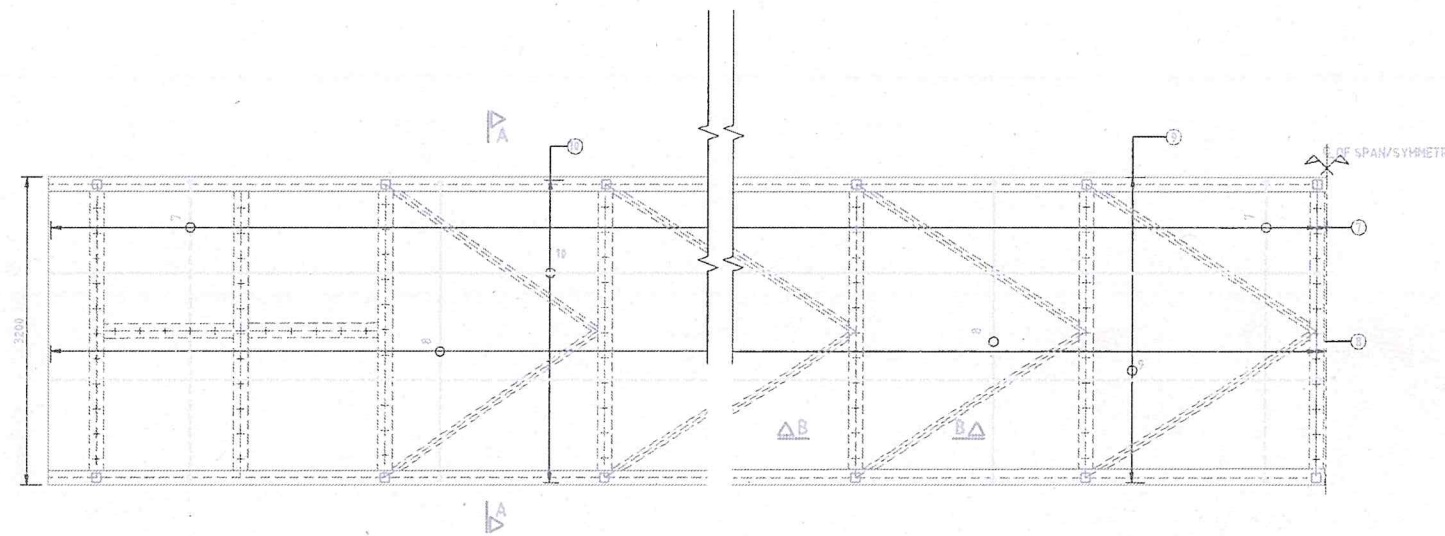
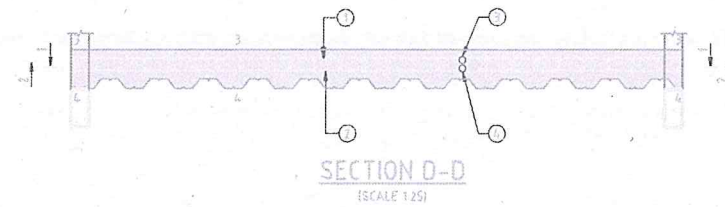
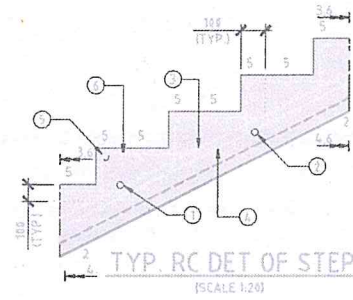
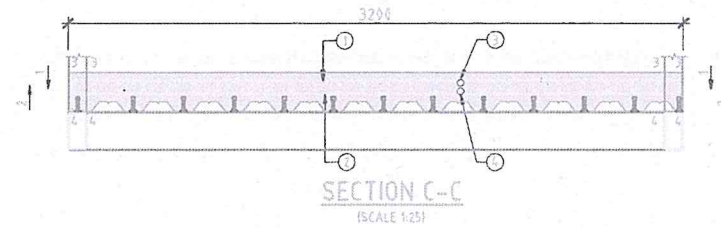


REINFORCEMENT DETAIL OF STAIRCASE
(SCALE 1:25)

N. Raja
N. Raja, HME cum RE
M/s. SA INFRA-QUEST
Independent Engineer of NH-79 & NH-32

Team Leader
Team Leader
M/s. SA INFRA - QUEST
Independent Engineer of NH-79 & NH-32

CLIENT:  NATIONAL HIGHWAY AUTHORITY OF INDIA G-5 & G-6 DWARAKA NEW DELHI	CONCESSIONAIRE: SU TOLL ROAD PRIVATE LTD REGD OFF: H BLOCK, 1ST FLOOR, DHIRUBHAI AMBANI KNOWLEDGE CITY, NEVI MIMBAI - 400710.	INDEPENDANT ENGINEER: SA INFRASTRUCTURE CONSULTANT PVT. LTD IN ASSOCIATION WITH QUEST ENGINEERS & CONSULTANTS PVT LTD. 1101B: 11Floor, Tower A-II, Ansal Corporate Park, Plot No: 7A/1, Sector-142, Noida - 201 301, India	PROJECT: 4/6 LANING OF SALEEM - ULUNDURPET SECTION FROM KM 0+313 TO KM 13+670.516 OF NH-79 BAR SCALE : 0 1 2 3 4 5 6 7 8 9 10 -1:100 0 2 4 6 8 10 12 14 16 18 20 -1:50	NUMERATION AND REINFORCEMENT DETAILS OF DECK SLAB & STAIRCASE TITLE:- FOB at Km. 70+200	APPROVED BY :	Drawing No: SU/NH-68/FOB-13
---	---	---	---	--	----------------------	------------------------------------



NOTES:


- ALL DIMENSIONS ARE IN MM AND LEVELS ARE IN METERS.
- GRADE OF CONCRETE SHALL BE AS BELOW
 - 1) RCC STAIRCASE, DECK SLAB - M30.
 - 2) PCC LEVELING COURSE - M15.
- Y-DENOTES HIGH YIELD STRENGTH DEFORMED BARS OF GRADE Fe 550 HAVING YIELD STRENGTH NOT LESS THAN 550 N/mm² CONFORMING TO IS - 1786 - 2008
- COVER OF REINFORCEMENT FOR DECK SLAB, STAIRCASE - 25mm.

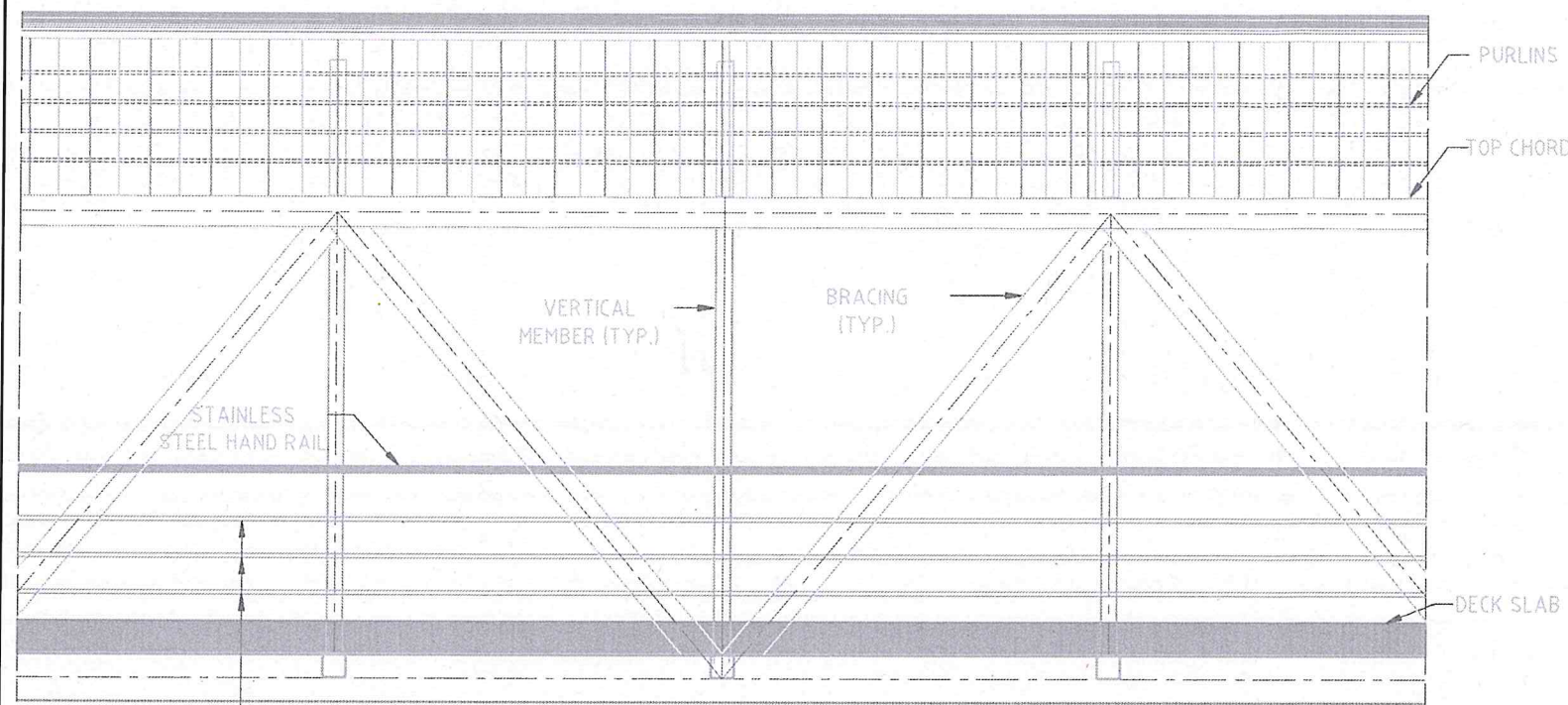
REINFORCEMENT DETAILS:

BAR MARK	TYPE & DIA	SHAPE OF BARS
1	Y10 AT 100	
2	Y10 AT 100	
3	Y10 AT 100	
4	Y10 AT 100	
5	Y10	
6	Y10	
7	Y10 AT 100	
8	Y10 AT 100	
9	Y10 AT 100	
10	Y10 AT 100	

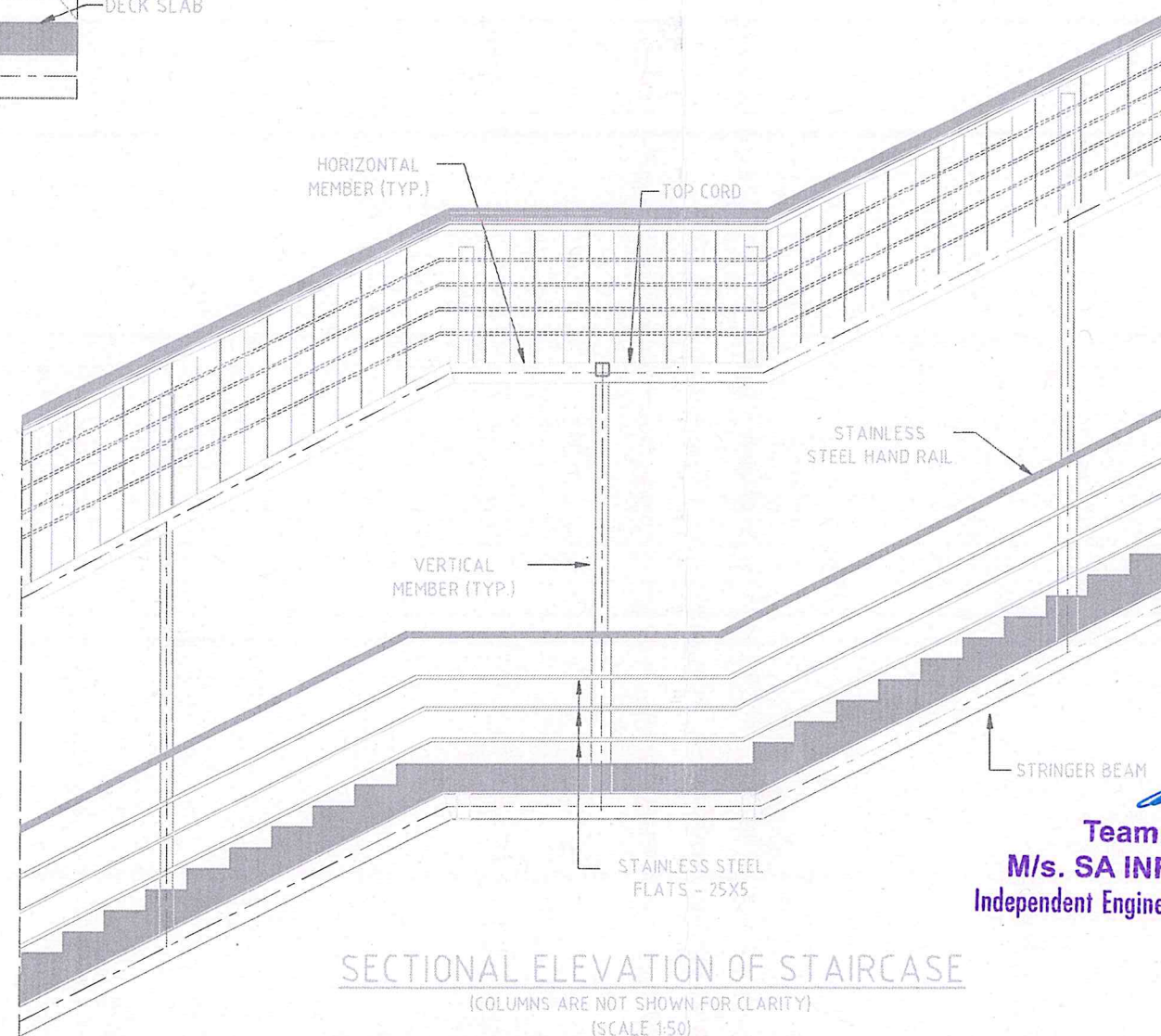
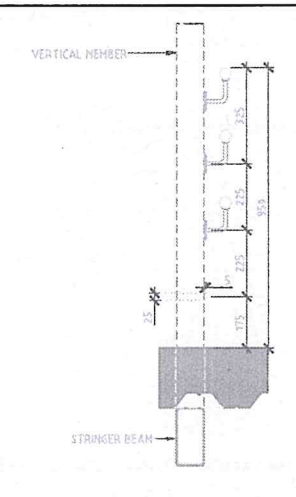
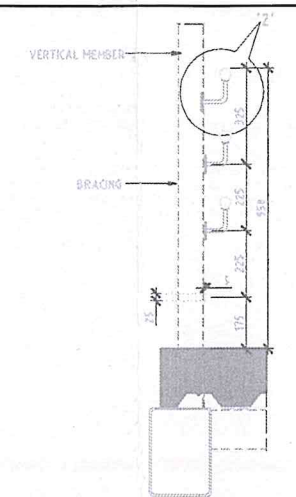
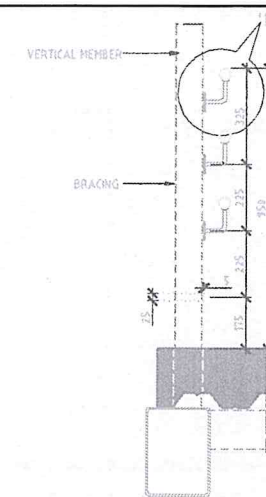
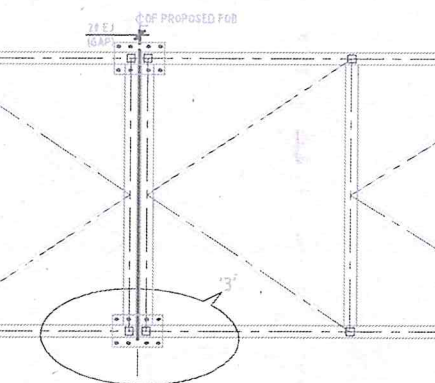
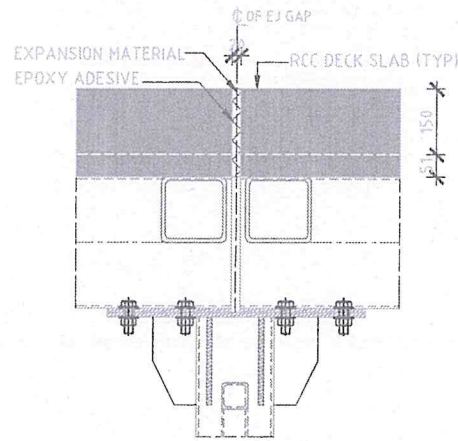
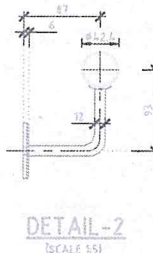
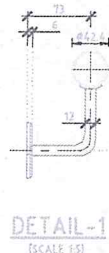
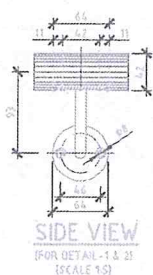
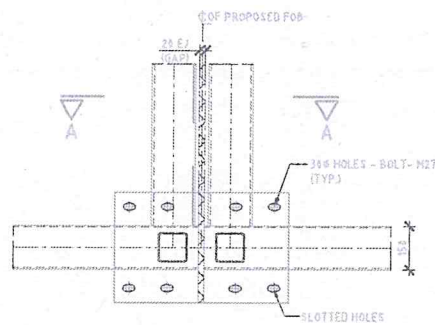
N. Raja, HME cum RE
M/s. SA INFRA-QUEST
Independent Engineer of NH-79 & NH-32

Team Leader
M/s. SA INFRA - QUEST
Independent Engineer of NH-79 & NH-32

CLIENT:  NATIONAL HIGHWAY AUTHORITY OF INDIA G-5 & G-6 DWARAKA NEW DELHI	CONCESSIONAIRE: SU TOLL ROAD PRIVATE LTD REGD OFF: H BLOCK, 1ST FLOOR, DHIRUBHAI AMBANI KNOWLEDGE CITY, NEVI MUMBAI - 400710.	INDEPENDANT ENGINEER: SA INFRASTRUCTURE CONSULTANT PVT. LTD IN ASSOCIATION WITH QUEST ENGINEERS & CONSULTANTS PVT LTD. 1101B: 11Floor, Tower A-II, Ansal Corporate Park, Plot No:7A/1, Sector-142, Noida - 201 301, India	PROJECT: 4/6 LANING OF SALEM - ULUNDURPET SECTION FROM KM 6+313 TO KM 136+670.516 OF NH-79 BAR SCALE : 0 1 2 3 4 5 6 7 8 9 10 -1:100 0 2 4 6 8 10 12 14 16 18 20 -1:150	NUMERATION AND REINFORCEMENT DETAILS OF DECK SLAB & STAIRCASE TITLE- FOB at Km. 70+200	APPROVED BY:	Drawing No: SU/NH-68/FOB-14
---	---	--	--	---	---------------------	------------------------------------



SECTIONAL ELEVATION
(AT BRIDGE-VERTICAL MEMBER & BRACING LOCATION)
(SCALE 1:50)



SECTIONAL ELEVATION OF STAIRCASE
(COLUMNS ARE NOT SHOWN FOR CLARITY)
(SCALE 1:50)

Team Leader
M/s. SA INFRA - QUEST
Independent Engineer of NH-79 & NH-32

N. Raja, HME cum E
M/s. SA INFRA-QUEST
Independent Engineer of NH-79 & NH-32

CLIENT:
NATIONAL HIGHWAY AUTHORITY OF INDIA
G-5 & G-6 DWARAKA
NEW DELHI

CONCESSIONAIRE:
SU TOLL ROAD PRIVATE LTD
REGD OFF: H BLOCK, 1ST FLOOR,
DHIRABHAI AMBANI KNOWLEDGE CITY,
NEVI MUMBAI - 400710.

INDEPENDANT ENGINEER:
SA INFRASTRUCTURES CONSULTANT PVT. LTD
IN ASSOCIATION WITH
QUEST ENGINEERS & CONSULTANTS PVT LTD.
1101B: 11Floor, Tower A-II, Ansal Corporate Park,
Plot No:7A/1, Sector-142,
Noida - 201 301, India

PROJECT:
4/6 LANE OF SALEM - ULUNDURPET SECTION FROM KM 0+313 TO
KM 136+670.516 OF NH-79
BAR SCALE : 0 1 2 3 4 5 6 7 8 9 10 -1:100
0 2 4 6 8 10 12 14 16 18 20 -1:50

FOB: HAND RAIL DETAILS
TITLE:- FOB at Km. 70+200

Drawing No: SU/NH-68/FOB-15