



NATIONAL HIGHWAYS AUTHORITY OF INDIA

(MINISTRY OF ROAD TRANSPORT & HIGHWAYS, GOVT. OF INDIA)

Name of the work:

**Construction of Foot Over Bridge
at Km. 16/550 (Karipatti) in
Salem to Ulundurpet section of
NH-79 in the State of Tamil Nadu.**

NHAI/RO-Chennai/FOB/NH-79/2024-25/....

VOL-III DRAWINGS

Regional Office - Chennai

National Highways Authority of India

(Ministry of Road, Transport & Highways)

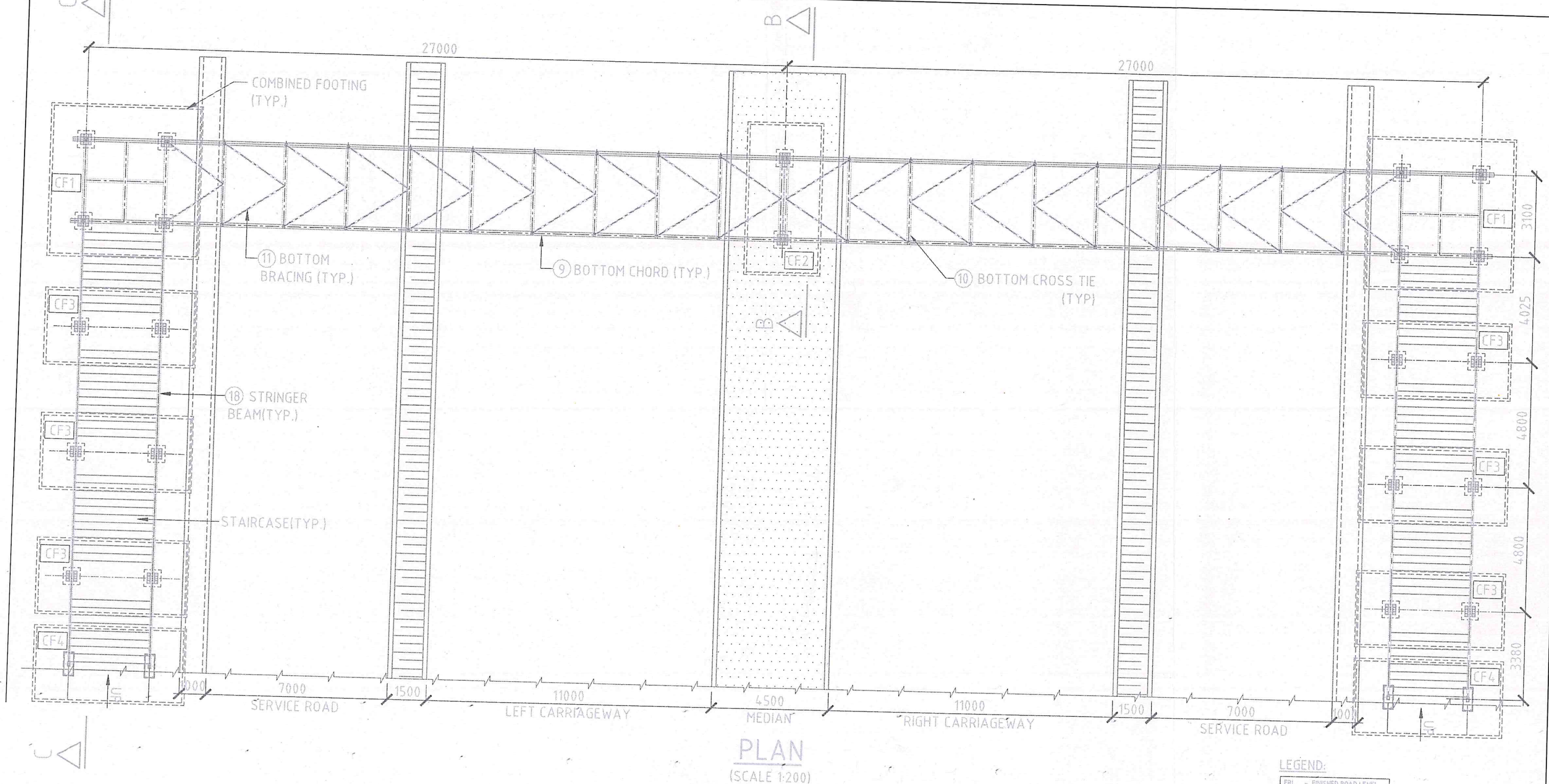
5th Floor, CMRL Building,

Poonamalle High Road,

Koyambedu, Chennai-600 107.

Phone No: 044 - 22252635

E mail: rochennai@nhai.org



LEGEND:

FRL	- FINISHED ROAD LEVEL
EJ	- EXPANSION JOINT
CL	- CENTER LINE
GL	- GROUND LEVEL
TOC	- TOP OF COLUMN

NOTES:


1. ALL DIMENSIONS ARE IN MILLIMETRES
2. ALL WELDS ARE 8mm FILLET WELD UNLESS OTHERWISE SPECIFIED
3. THE CUT LENGTH OF MEMBERS AND THE NOS. REQUIRED SHALL BE DETERMINED AT SITE BY FULL SCALE LAYOUT
4. GRADE OF ALL STRUCTURAL STEEL SHALL CONFORM TO IS.2062-2010
5. ALL BOLTS & PINS ARE OF 8.8 GRADE UNLESS OTHERWISE SPECIFIED
6. CONCRETE GRADE SHALL BE M30
7. GRADE OF STRUCTURAL STEEL - YST 310
8. GRADE OF STEEL - Fe550
9. ALL STRUCTURAL STEEL MEMBERS SHOULD BE TREATED WITH PRIMER AND ANTI-CORROSIVE PAINTS/COATING AS PER APPLICABLE SPECIFICATION
10. FOUNDING LEVEL SHALL BE MINIMUM 3m FROM FRL
11. SBC AT SITE CONSIDERED IS 20T/M²

Asst. HME
SA - Quest

N. Raja, HME cum RE
M/s. SA INFRA-QUEST
Independent Engineer of NH-79 & NH-32

Team Leader
M/s. SA INFRA - QUEST
Independent Engineer of NH-79 & NH-32

CLIENT:


NATIONAL HIGHWAY AUTHORITY OF INDIA
G-5 & G-6 DWARAKA
NEW DELHI

CONSESSONAIRES

SU TOLL ROAD PRIVATE LIMITED
Reg Off: Reliance Centre,
19, Walchand Hirachand Marg,
Balard Estate,
Mumbai - 400 001, India

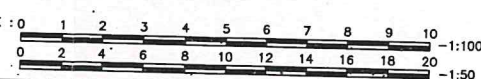
INDEPENDANT ENGINEER:

SA INFRASTRUCTURE CONSULTANT PVT. LTD
IN ASSOCIATION WITH
QUEST ENGINEERS & CONSULTANTS PVT LTD.
1101B: 11Floor, Tower A-II, Ansal Corporate Park,
Plot No:7A/I, Sector-142,
Noida - 201 301, India

PROJECT:

4/6 LANING OF SALEM - ULUNDURPET FROM KM 0+313 TO KM
136+670 OF NH-79

BAR SCALE : 0

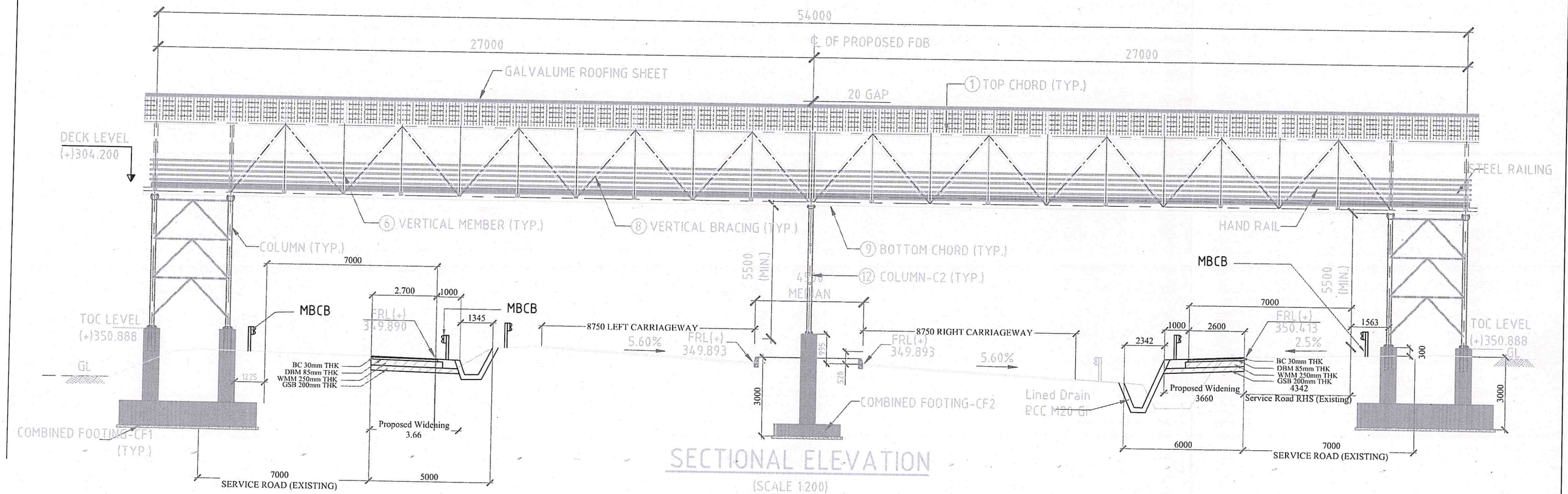


PLAN & LAYOUT OF FOB

TITLE:- FOB at Km. 16+550

APPROVED BY :

Drawing No: SUTRPL/NH-79/FOB - 01




Asst. HME
SA - Quest

N. Raja, HME cum RE
M/s. SA INFRA-QUEST
Independent Engineer of NH-79 & NH-32

Team Leader
M/s. SA INFRA - QUEST
Independent Engineer of NH-79 & NH-32

CLIENT:


NATIONAL HIGHWAY AUTHORITY OF INDIA
G-5 & G-6 DWARAKA
NEW DELHI

CONSESSONAIRE

SU TOLL ROAD PRIVATE LIMITED
Reg Off: Reliance Centre,
19, Walchand Hirachand Marg,
Balard Estate,
Mumbai - 400 001, India

INDEPENDANT ENGINEER:

SA INFRASTRUCTURE CONSULTANT PVT. LTD
IN ASSOCIATION WITH
QUEST ENGINEERS & CONSULTANTS PVT LTD.
1101B: 11Floor, Tower A-II, Ansal Corporate Park,
Plot No:7A/1, Sector-142,
Noida - 201 301, India

PROJECT:

4/6 LANING OF SALEM - ULUNDURPET FROM KM 0+313 TO KM
136+670 OF NH-79

BAR SCALE : 0

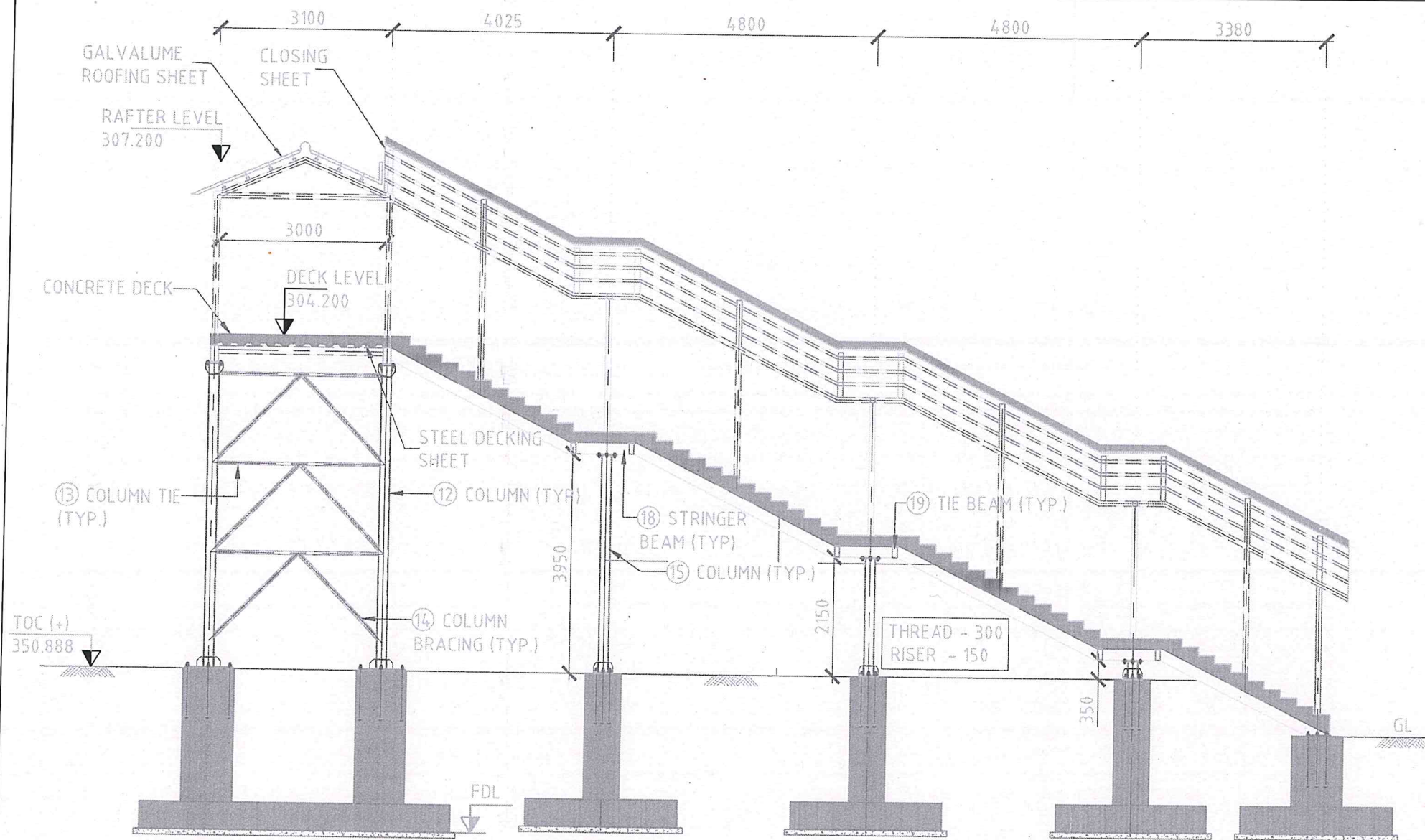
1 2 3 4 5 6 7 8 9 10
0 2 4 6 8 10 12 14 16 18 20
-1:100
-1:50

FOB - Sectional Elevation Drg.

TITLE:- FOB at Km. 16+550

APPROVED BY :

Drawing No: SUTRPL/NH-79/FOB - 02



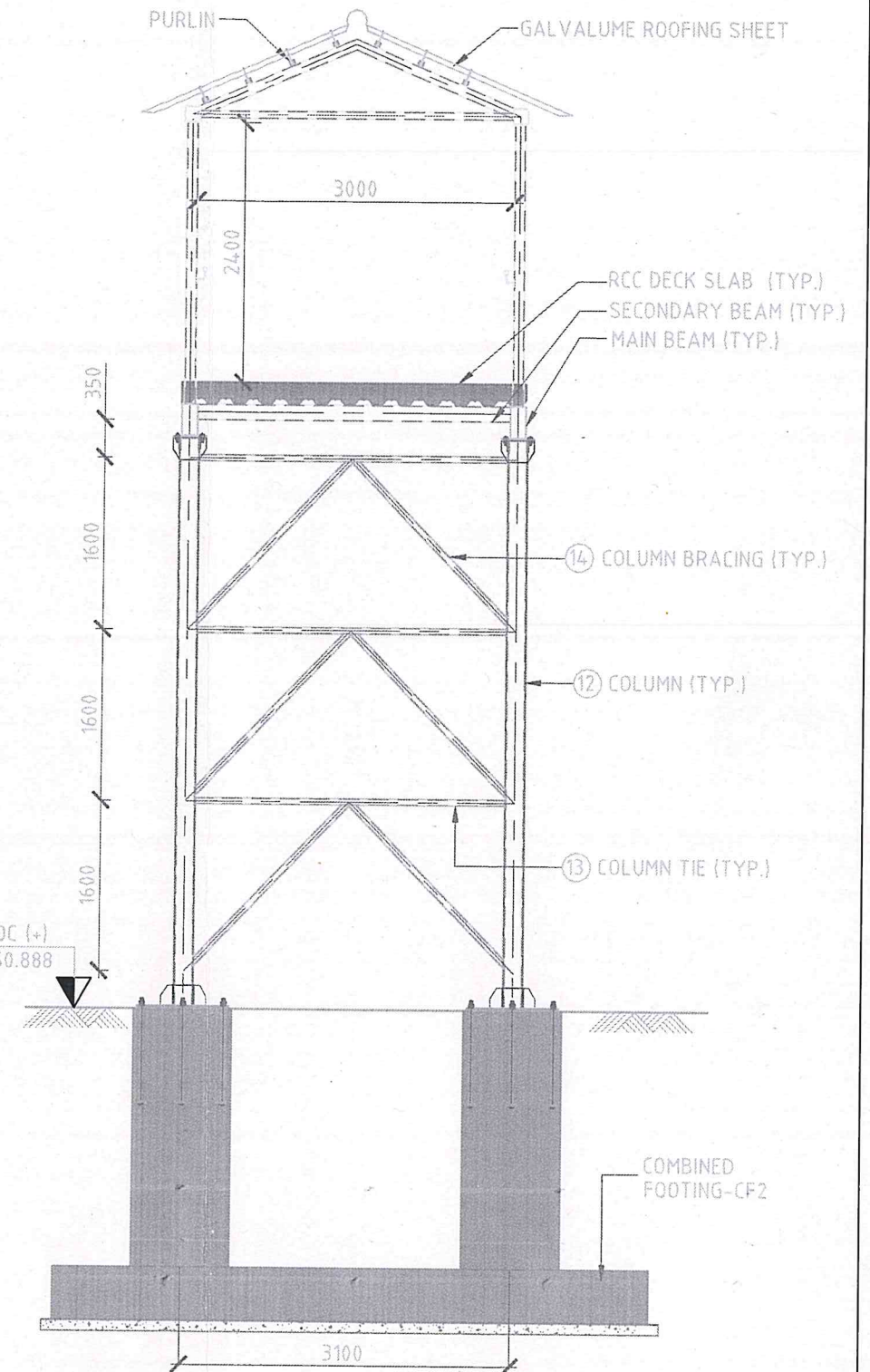
SECTION C-C
(SCALE 1:125)

LEGEND:

FRL	- FINISHED ROAD LEVEL
EJ	- EXPANSION JOINT
CL	- CENTER LINE
GL	- GROUND LEVEL
TOC	- TOP OF COLUMN

NOTES:

1. ALL DIMENSIONS ARE IN MILLIMETRES
2. ALL WELDS ARE 8mm FILLET WELD UNLESS OTHERWISE SPECIFIED
3. THE CUT LENGTH OF MEMBERS AND THE Nos. REQUIRED SHALL BE DETERMINED AT SITE BY FULL SCALE LAYOUT
4. GRADE OF ALL STRUCTURAL STEEL SHALL CONFIRM TO I.S.2062-2010
5. ALL BOLTS & PINS ARE OF 8.8 GRADE UNLESS OTHERWISE SPECIFIED
6. CONCRETE GRADE SHALL BE M30
7. GRADE OF STRUCTURAL STEEL :YST 310.
8. GRADE OF STEEL : Fe550.
9. ALL STRUCTURAL STEEL MEMBERS SHOULD BE TREATED WITH PRIMER AND ANTI-CORROSIVE PAINTS/COATING AS PER APPLICABLE SPECIFICATION.
10. FOUNDING LEVEL SHALL BE MINIMUM 3m FROM FRL.
11. SBC AT SITE CONSIDERED IS 20T/M²



SECTION B-B
(SCALE 1:75)

Asst. HME
SA - Quest

Ppm
N. Raja, HME cum RE
M/s. SA INFRA-QUEST
Independent Engineer of NH-79 & NH-32

Team Leader
M/s. SA INFRA - QUEST
Independent Engineer of NH-79 & NH-32

CLIENT:



NATIONAL HIGHWAY AUTHORITY OF INDIA
G-5 & G-6 DWARAKA
NEW DELHI

CONSESSONAIRE

SU TOLL ROAD PRIVATE LIMITED
Reg Off: Reliance Centre,
T9, Walchand Hirachand Marg,
Balard Estate,
Mumbai - 400 001, India

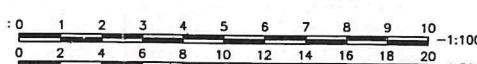
INDEPENDANT ENGINEER:

SA INFRASTRUCTURE CONSULTANT PVT. LTD
IN ASSOCIATION WITH
QUEST ENGINEERS & CONSULTANTS PVT. LTD.
1101B: 11Floor, Tower A-II, Ansal Corporate Park,
Plot No:7A/1, Sector-142,
Noida - 201 301, India

PROJECT:

4/6 LANING OF SALEM - ULUNDURPET FROM KM 0+313 TO KM
136+670 OF NH-79

BAR SCALE :

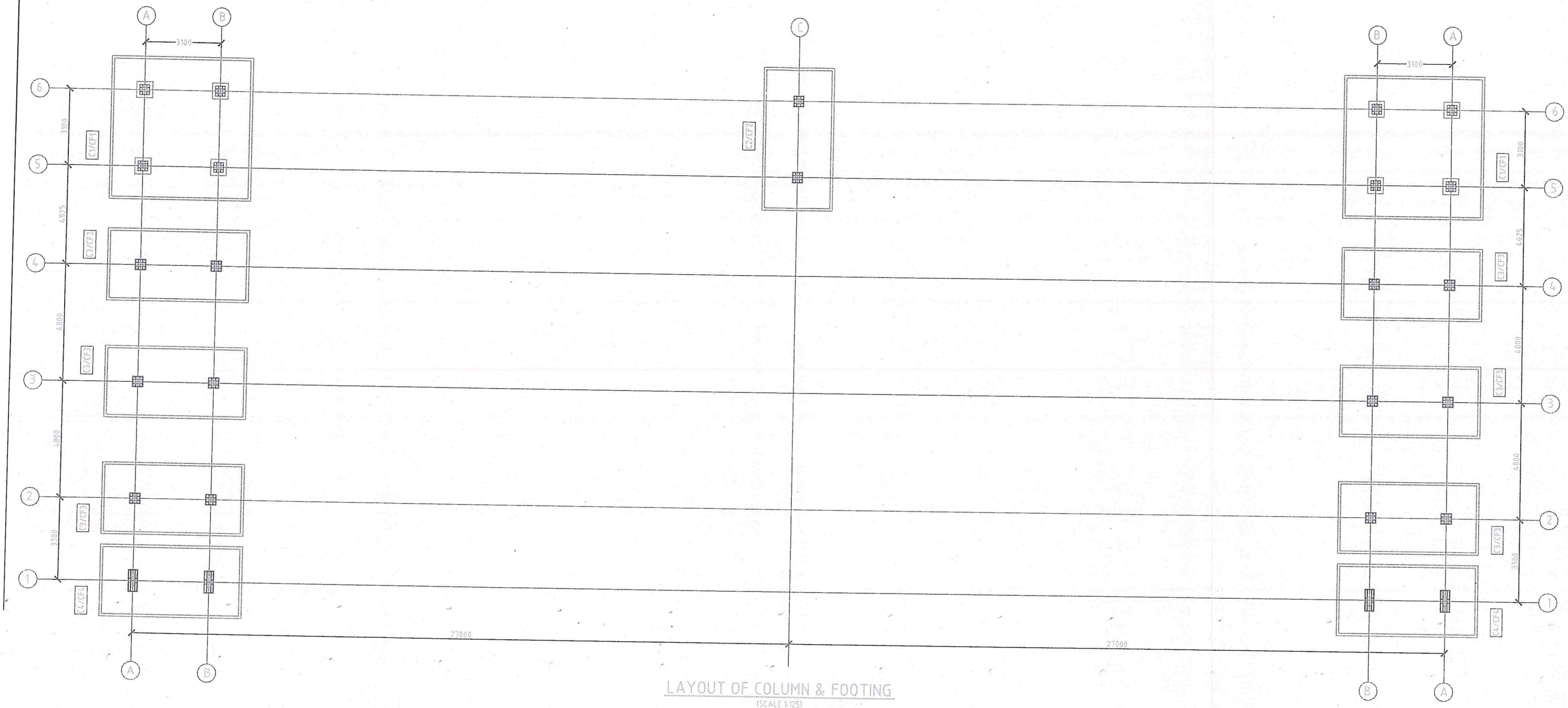


FOB - Stair Sectional Elevation Drg.

TITLE:- FOB at Km. 16+550

APPROVED BY :

Drawing No: SUTRPL/NH-79/FOB - 03




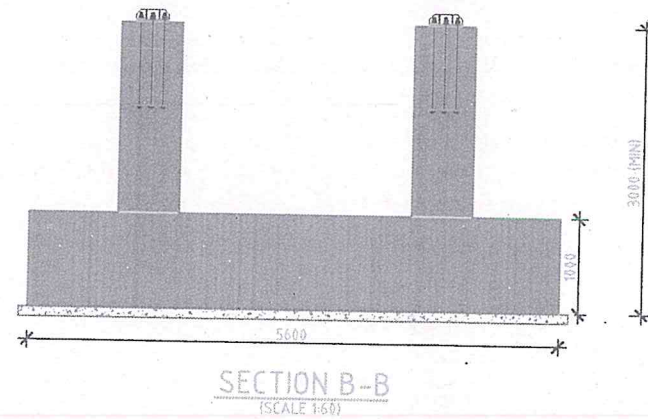
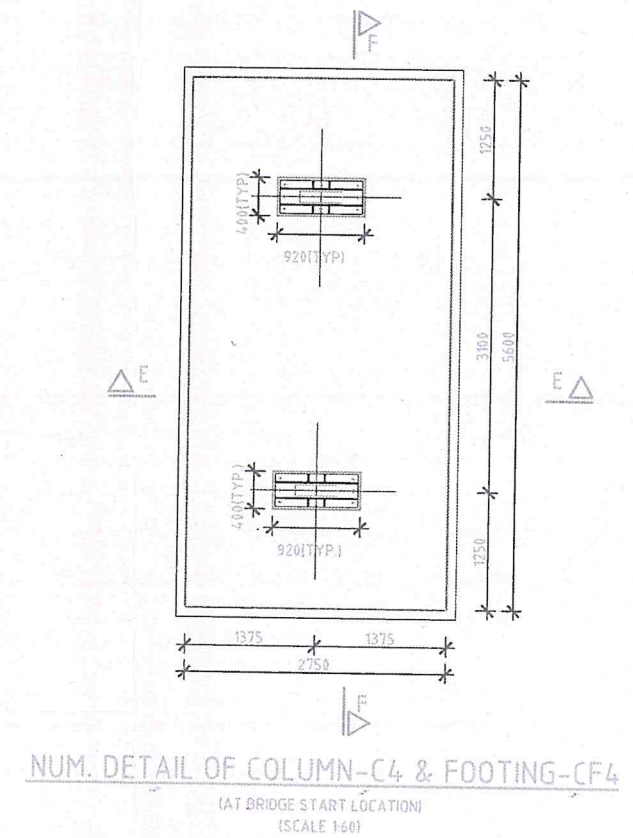
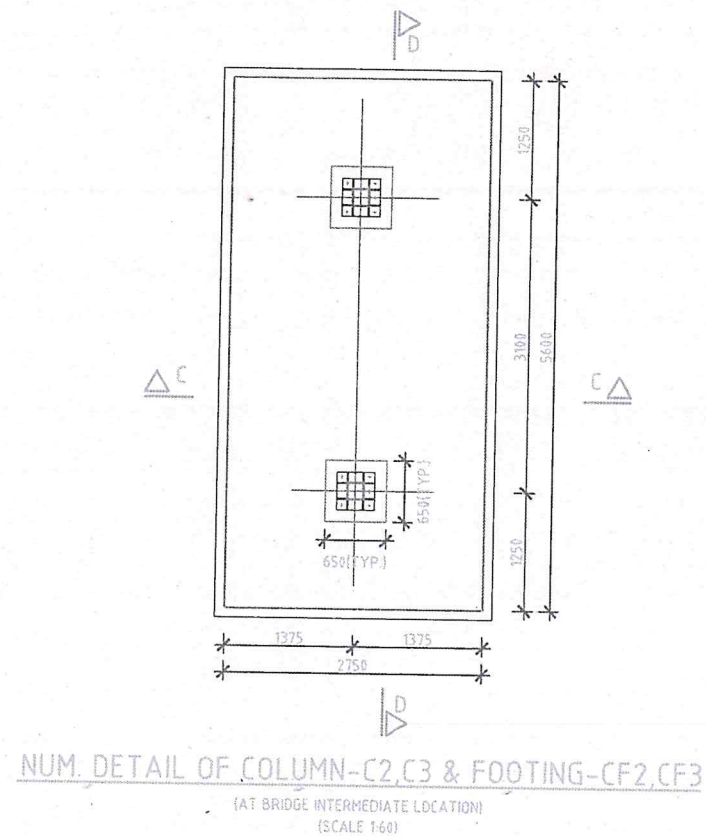
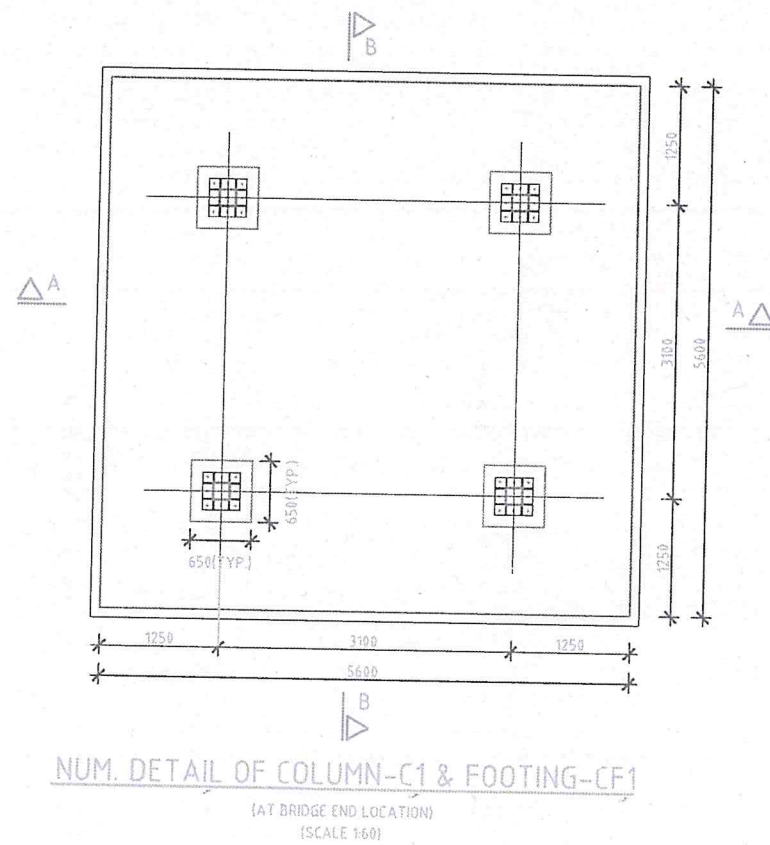
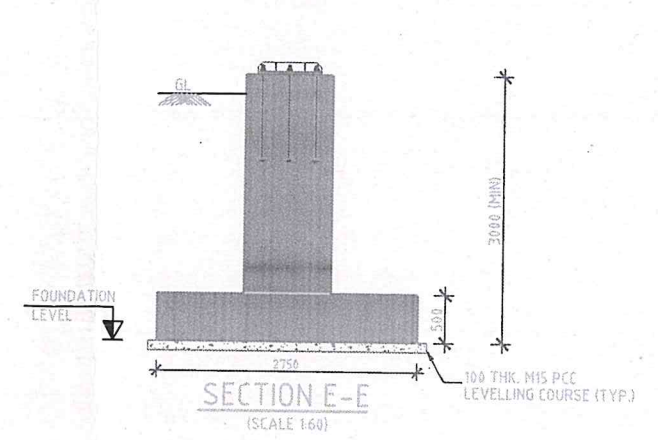
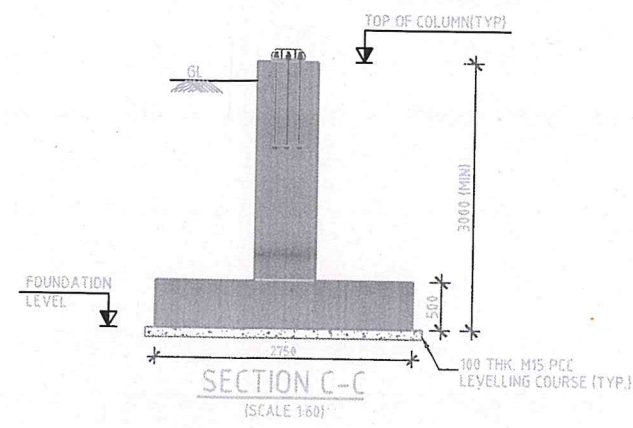
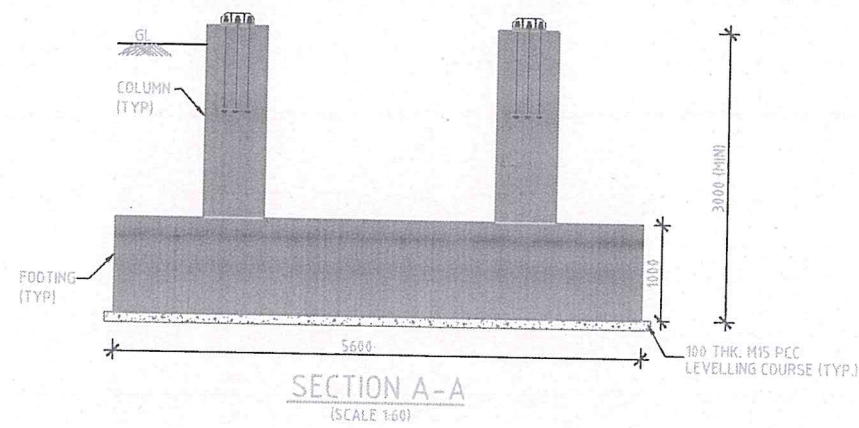
Asst. HME
SA - Ques'

LAYOUT OF FOOTING DETAIL			
FOOTING TYPE	FOOTING SIZE (L)	FOOTING SIZE (B)	MINIMUM FOUNDING LEVEL (m)
CF1	5600	5600	(+1350.888)
CF2 / CF3 / CF4	5600	2750	(+1350.888)

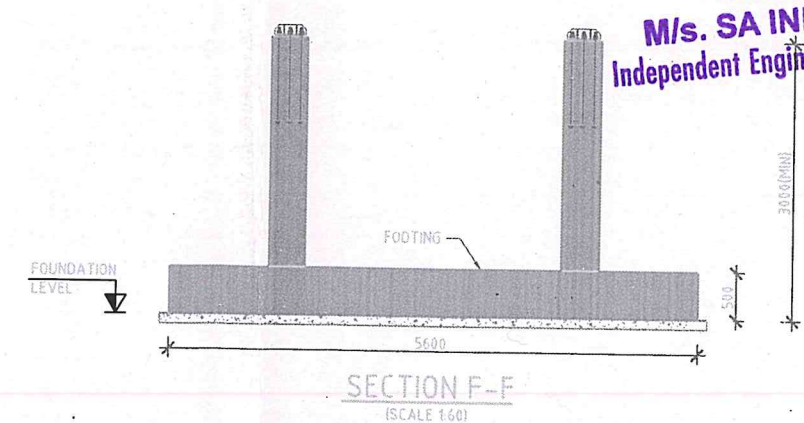
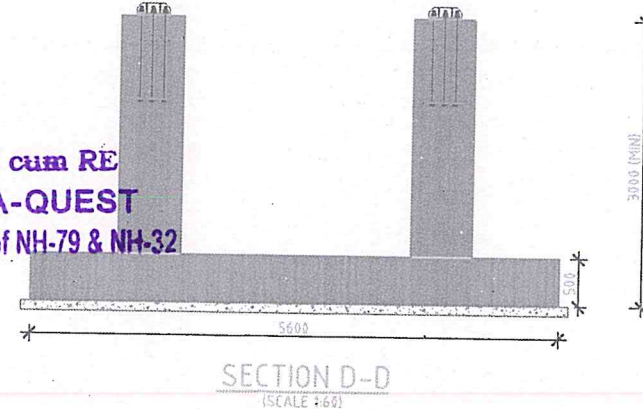
N. Raja, HME cum RE
M/s. SA INFRA-QUEST
Independent Engineer of NH-79 & NH-32

Team Leader
M/s. SA INFRA - QUEST
Independent Engineer of NH-79 & NH-32

CLIENT:  NATIONAL HIGHWAY AUTHORITY OF INDIA G-5 & G-6 DWARAKA NEW DELHI	CONSESSORNAIRE SU TOLL ROAD PRIVATE LIMITED Reg Off: Reliance Centre, 19, Walchand Hirachand Marg, Balard Estate, Mumbai - 400 001, India	INDEPENDANT ENGINEER: SA INFRASTRUCTURE CONSULTANT PVT. LTD IN ASSOCIATION WITH QUEST ENGINEERS & CONSULTANTS PVT LTD. 1101B: 11Floor, Tower A-II, Ansal Corporate Park, Plot No: 7A/I, Sector-142, Noida - 201 301, India	PROJECT: 4/6 LANING OF SALEM - ULUNDURPET FROM KM 0+313 TO KM 136+670 OF NH-79 BAR SCALE : 0 1 2 3 4 5 6 7 8 9 10 -1:100 0 2 4 6 8 10 12 14 16 18 20 -1:50	FOB - Footing Layout Drg.	APPROVED BY :	Drawing No: SUTRPL/NH-79/FOB - 04
				TITLE:- FOB at Km. 16+550		



Pm
N. Raja, HME cum RE
M/s. SA INFRA-QUEST
Independent Engineer of NH-79 & NH-32



Team Leader
M/s. SA INFRA - QUEST
Independent Engineer of NH-79 & NH-32

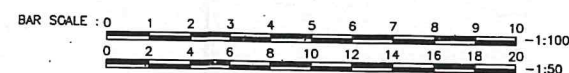
Asst. HME
SA - Quest

CLIENT
NATIONAL HIGHWAY AUTHORITY OF INDIA
G-5 & G-6 DWARAKA
NEW DELHI

CONSESSONAIRES
SU TOLL ROAD PRIVATE LIMITED
Reg Off: Reliance Centre,
19, Walchand Hirachand Marg,
Balard Estate,
Mumbai - 400 001, India

INDEPENDANT ENGINEER
SA INFRASTRUCTURE CONSULTANT PVT. LTD
IN ASSOCIATION WITH
QUEST ENGINEERS & CONSULTANTS PVT LTD.
1101B: 11Floor, Tower A-II, Ansal Corporate Park,
Plot No: 7A/1, Sector-142,
Noida - 201 301, India

PROJECT:
4/6 LANING OF SALEM - ULUNDURPET FROM KM 0+313 TO KM
136+670 OF NH-79

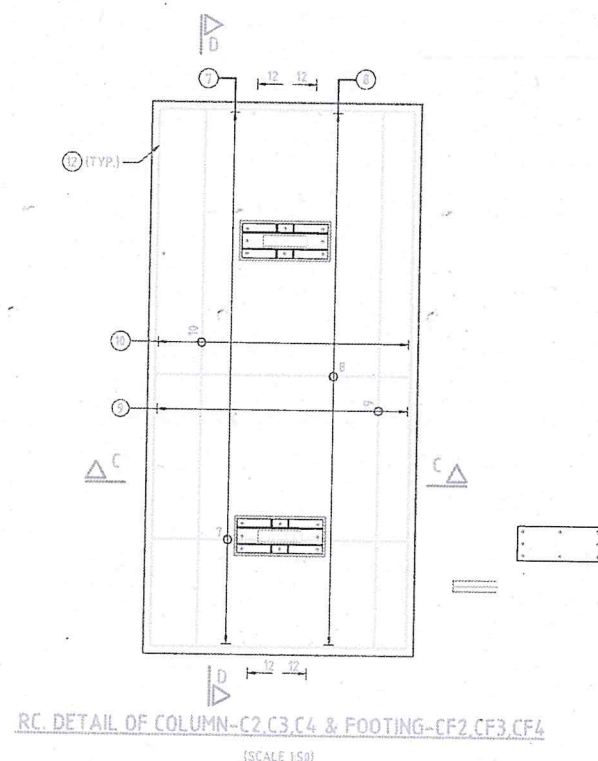
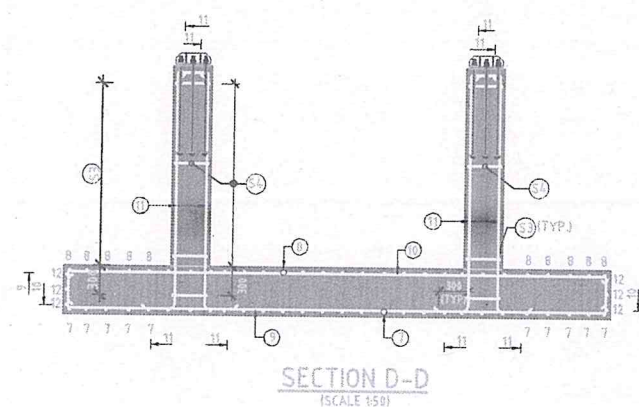
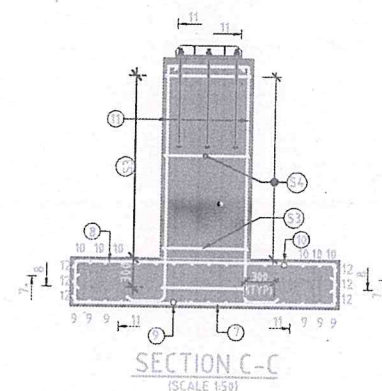
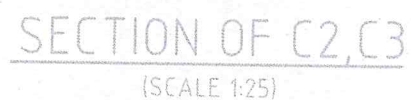


FOB - Foundation Detail Drg.

TITLE:- FOB at Km. 16+550

APPROVED BY:

Drawing No: SUTRPL/NH-79/FOB - 05




LEGEND:

	TOP REINFORCEMENT
	BOTTOM REINFORCEMENT
	CONSTRUCTION JOINT

NOTES:

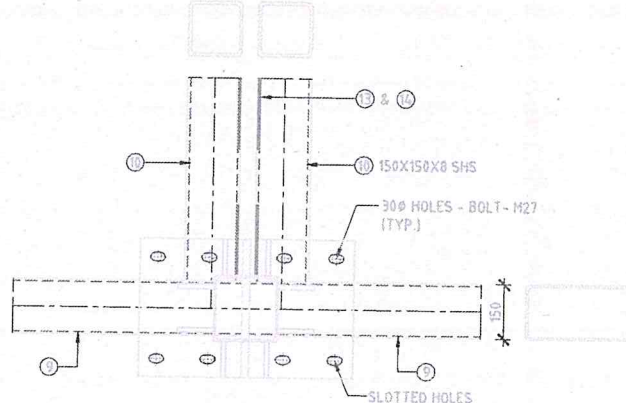
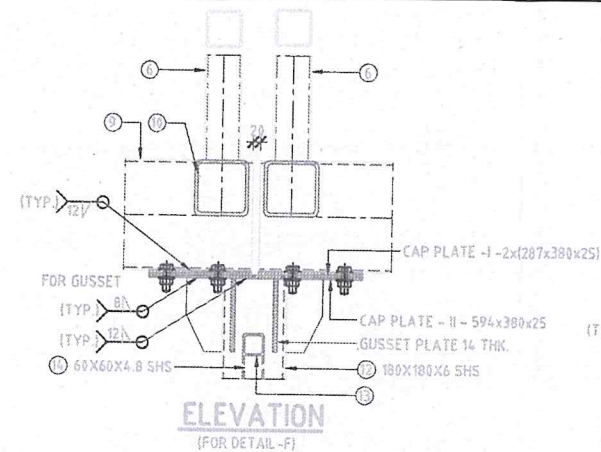
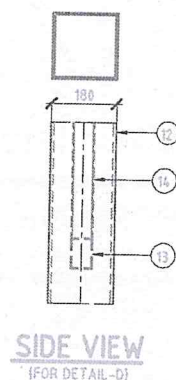
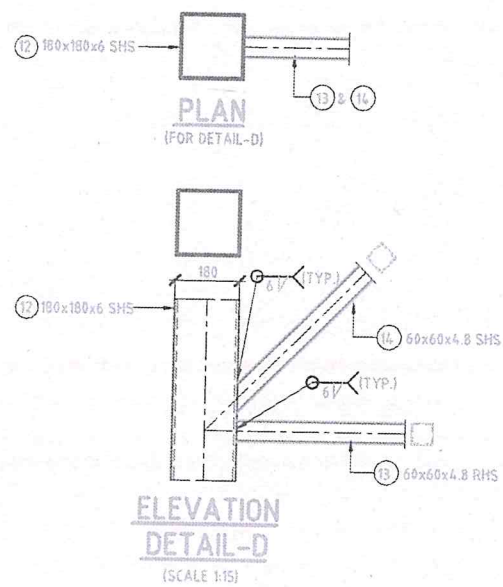
1. ALL DIMENSIONS ARE IN MILLIMETER AND LEVELS ARE IN METRE.
2. ONLY WRITTEN DIMENSION TO BE FOLLOWED.
3. CLEAR COVER TO REINFORCEMENT.
 - A. COLUMNS = 50mm
 - BEAM & NH-32 FOOTING = 75mm
4. REINFORCEMENT SHALL BE OF GRADE Fe550 CONFORMING TO IS 1786.
5. DEVELOPMENT LENGTH SHALL BE 44 ϕ .
6. LAP LENGTH SHALL BE 1.4x DEVELOPMENT LENGTH.


N. Raja, HME cum RE
M/s. SA INFRA-QUEST
Independent Engineer of NH-79 & NH-32

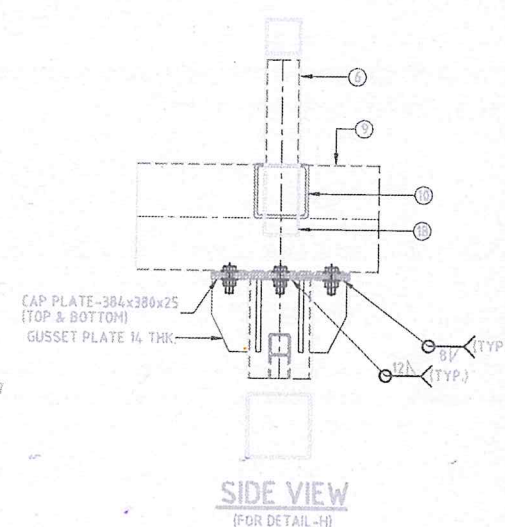
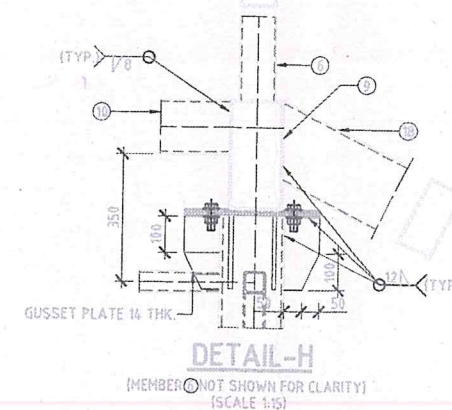
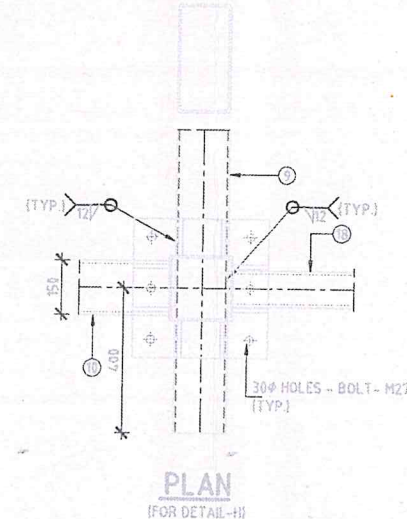
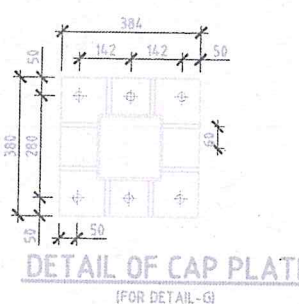
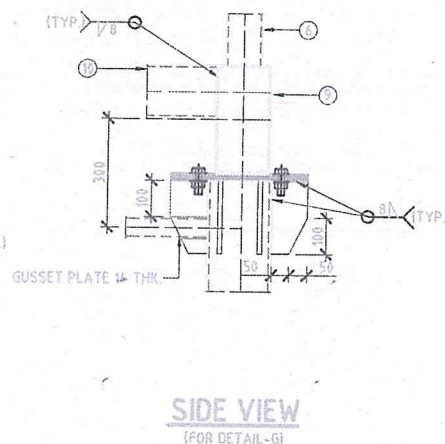
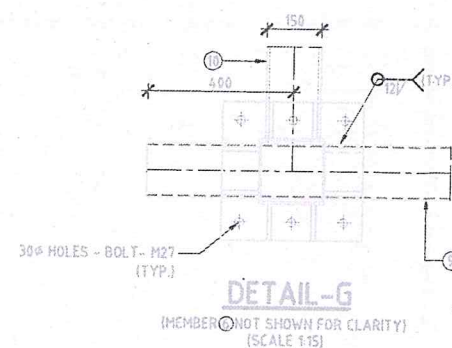
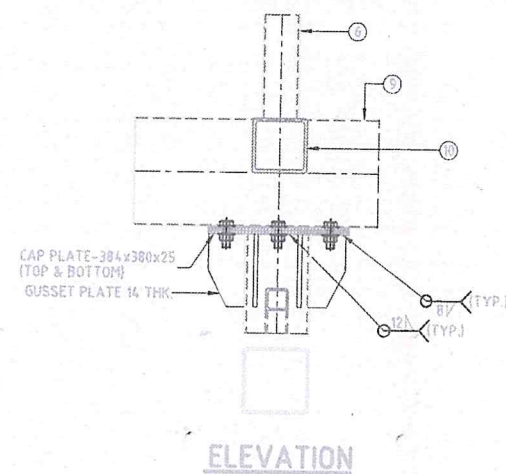
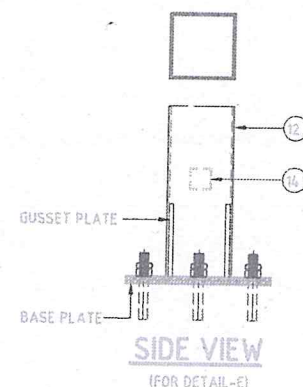
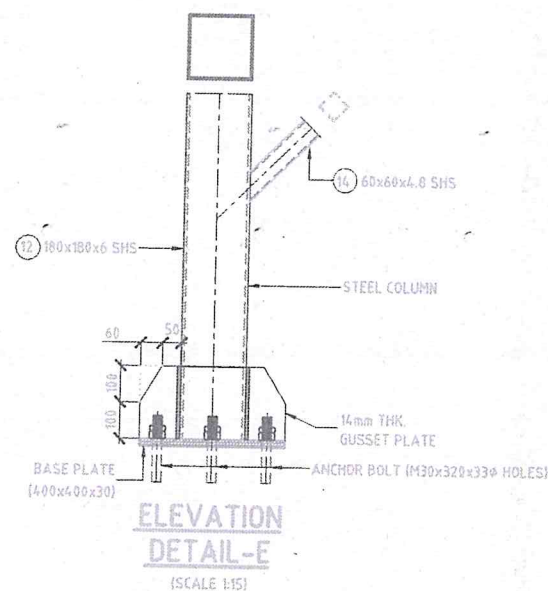
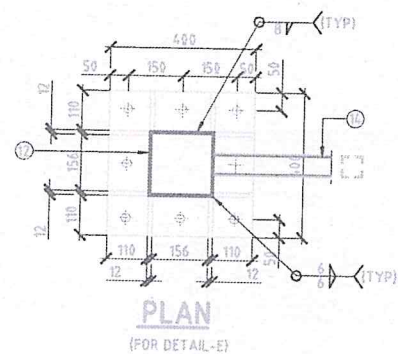
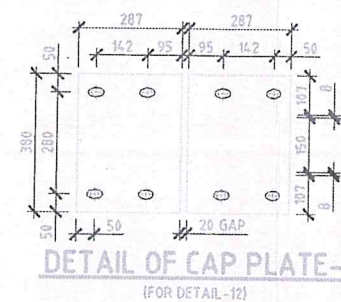
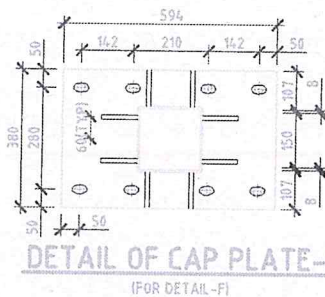
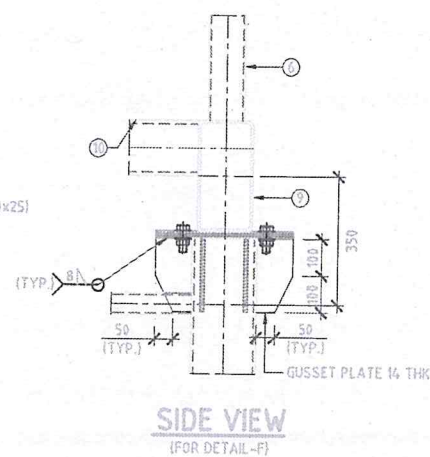
Team Leader
M/s. SA INFRA - QUEST
Independent Engineer of NH-79 & NH-32

Asst HME
SA - Ques^t

Drawing No: SUTRPL/NH-79/FOB - 06



SUFFICIENT SPACE FOR SLOTTED HOLES SHOULD BE GIVEN IN CAP PLATE - I (TOP)



(FOR CAP PLATE DETAIL REFER DETAIL-G)

N. Raja, HME cum RE
M/s. SA INFRA-QUEST
Independent Engineer of NH-79 & NH-32

NOTES :-
REFER DWG. NO. 005

Team Leader

M/s. SA INFRA-QUEST
Independent Engineer of NH-79 & NH-32

Drawing No: SUTRPL/NH-79/FOB/08

CLIENT:
NATIONAL HIGHWAY AUTHORITY OF INDIA
G-5 & G-6 DWARAKA
NEW DELHI

CONCESSIONAIRE:
SU TOLL ROAD PRIVATE LTD
REGD OFF: H BLOCK, 1ST FLOOR,
DHIRABHAI, AMBANI KNOWLEDGE CITY,
NEVI MIMBAI - 400710.

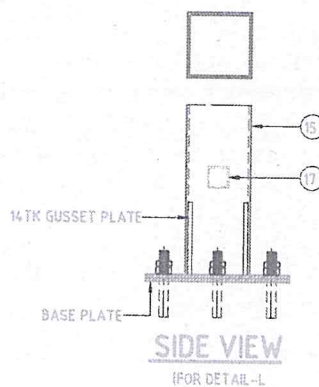
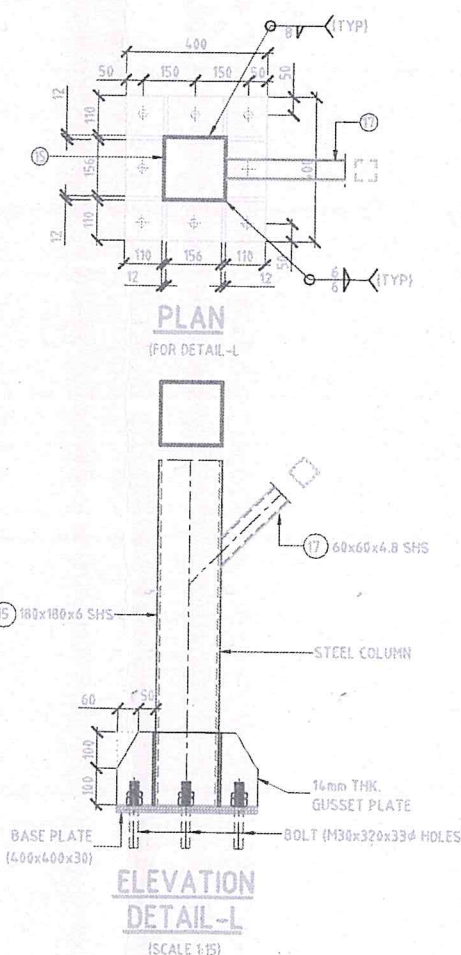
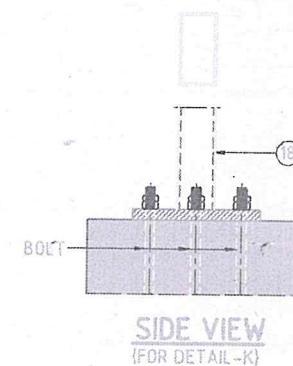
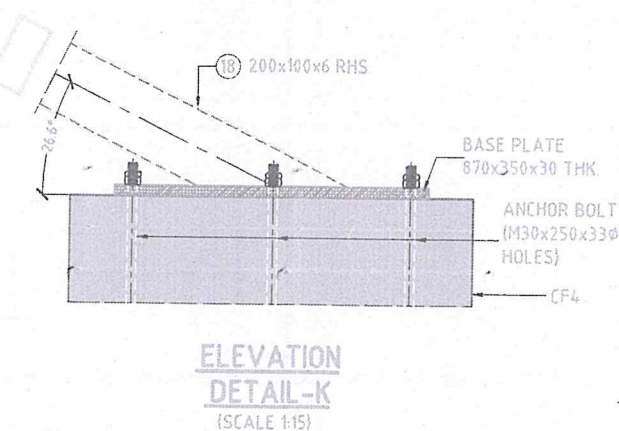
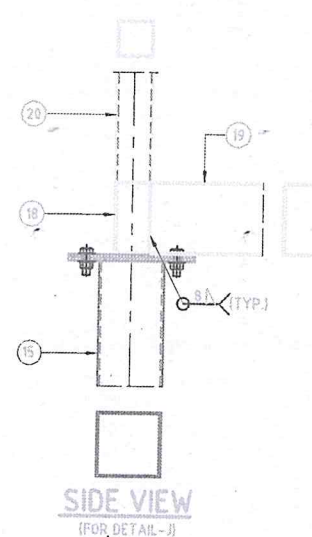
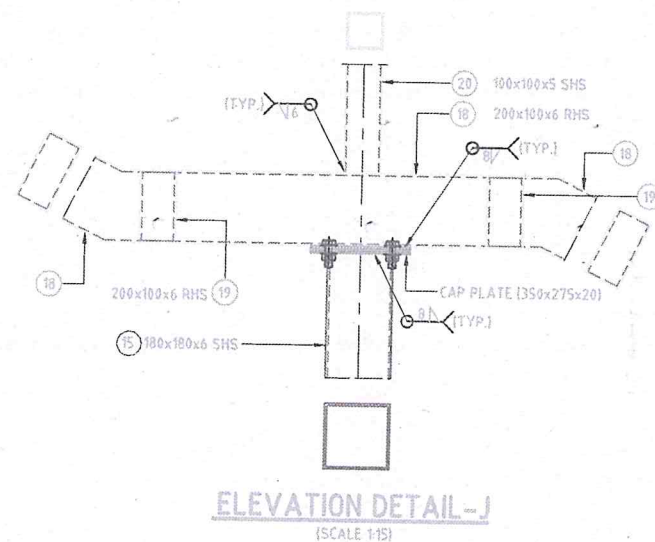
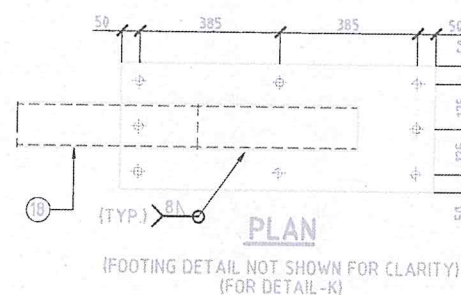
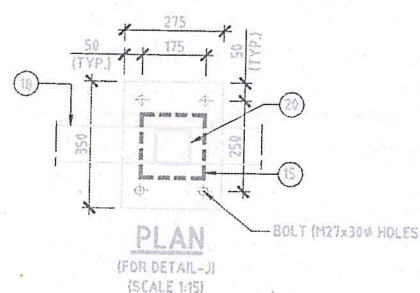
INDEPENDANT ENGINEER:
SA INFRASTRUCTURE CONSULTANT PVT. LTD
IN ASSOCIATION WITH
QUEST ENGINEERS & CONSULTANTS PVT LTD.
1101B: 11 Floor, Tower A-II, Ansal Corporate Park,
Plot No: 7A/1, Sector-142,
Noida - 201 301, India

PROJECT:
4/6 LANING OF PONDICHERRY - TINDIVANAM SECTION FROM KM
0+000 TO KM 38+620 OF NH-32

BAR SCALE : 0 1 2 3 4 5 6 7 8 9 10
0 2 4 6 8 10 12 14 16 18 20
-1:100
-1:50

FOB - Stranger Typs & Details
TITLE:- FOB at Km. 16+550


APPROVED BY :

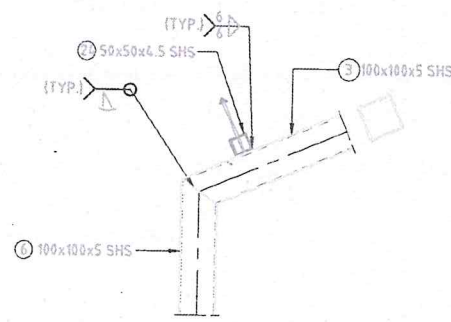


Asst. HME
SA Quest

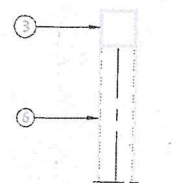
N.Raja, HME cum RE
M/s. SA INFRA-QUEST
Independent Engineer of NH-79 & NH-32

Team Leader
M/s. SA INFRA - QUEST
Independent Engineer of NH-79 & NH-32

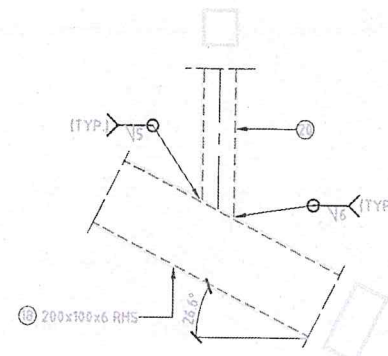
<div>CLIENT:</div> <div></div> <div>NATIONAL HIGHWAY AUTHORITY OF INDIA G-5 & G-6 DWARAKA NEW DELHI</div>	<div>CONCESSIONAIRE:</div> <div>SU TOLL ROAD PRIVATE LTD</div>	<div>INDEPENDANT ENGINEER:</div> <div>SA INFRASTRUCTURE CONSULTANT PVT. LTD IN ASSOCIATION WITH QUEST ENGINEERS & CONSULTANTS PVT LTD. 1101B: 11Floor, Tower A-II, Ansal Corporate Park, Plot No:7A/1, Sector-142, Noida - 201 301, India</div>	<div>PROJECT:</div> <div>4/6 LANING OF PONDICHERRY - TINDIVANAM SECTION FROM KM 0+000 TO KM 38+620 OF NH-32</div>	<div>Independent Engineer of NH-79 & NH-32</div> <div>FOB - Misc. Items & Details</div>	<div>APPROVED BY :</div>
	<div>REGD OFF: H BLOCK, 1ST FLOOR, DHIRAUBHAI, AMBANI KNOWLEDGE CITY, NEVI MIMBAI - 400710.</div>	<div>BAR SCALE : 0 1 2 3 4 5 6 7 8 9 10 1:100 0 2 4 6 8 10 12 14 16 18 20 1:50</div>	<div>TITLE:-</div> <div>FOB at Km.16+550</div>	<div>Drawing No:</div> <div>SUTRPL/NH-79/FOB/09</div>	



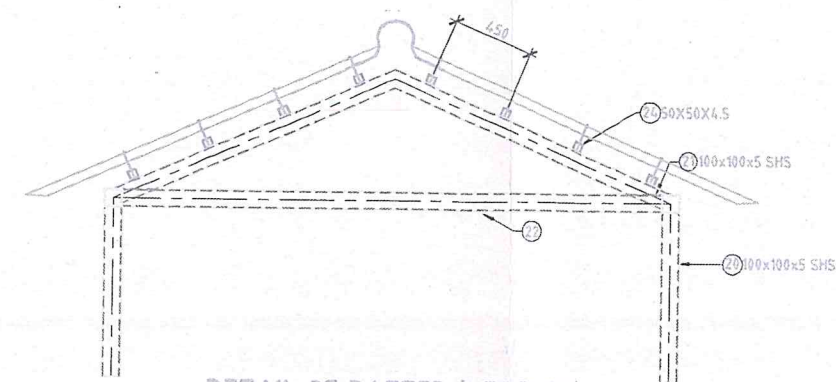
**ELEVATION
DETAIL-M**
(SCALE 1:15)



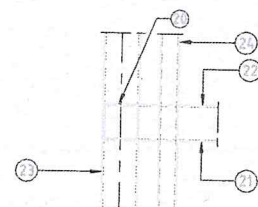
**SIDE VIEW
(FOR DETAIL-M)**



**ELEVATION
(FOR DETAIL-Q)**



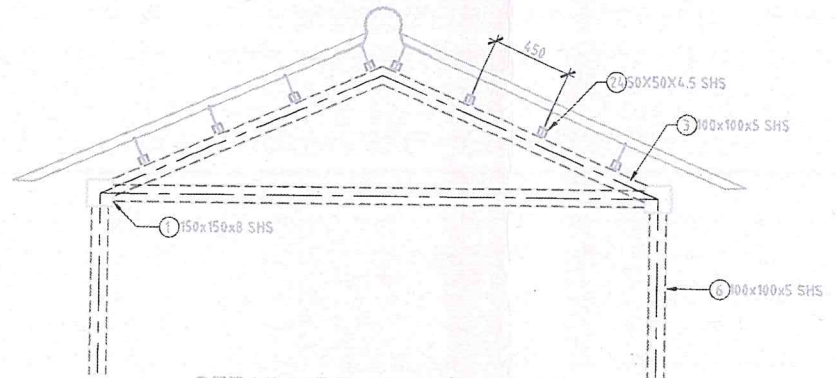
DETAIL OF RAFTER (NEAR C3)
(AT SUPPORT BRIDGE & STAIRCASE LOCATION)
(SCALE 1:30)



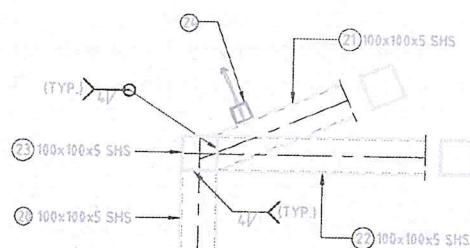
**PLAN
(FOR DETAIL-N)**
(SCALE 1:15)



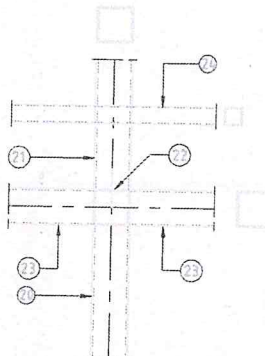
DETAIL-Q
(SCALE 1:15)



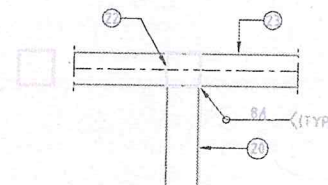
DETAIL OF RAFTER (NEAR C1)
(AT SUPPORT BRIDGE LOCATION)
(SCALE 1:30)



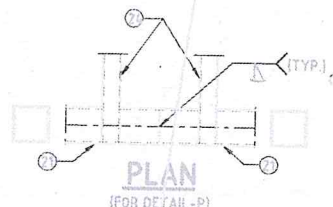
**ELEVATION
DETAIL-N**
(SCALE 1:15)



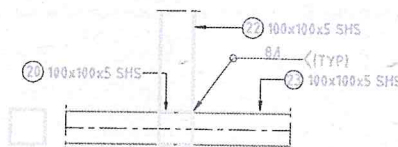
**SIDE VIEW
(FOR DETAIL-N)**



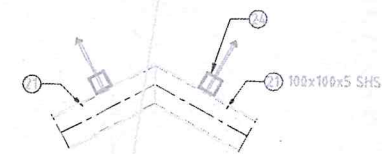
**ELEVATION
(FOR DETAIL-R)**



**PLAN
(FOR DETAIL-P)**



DETAIL-R
(SCALE 1:15)




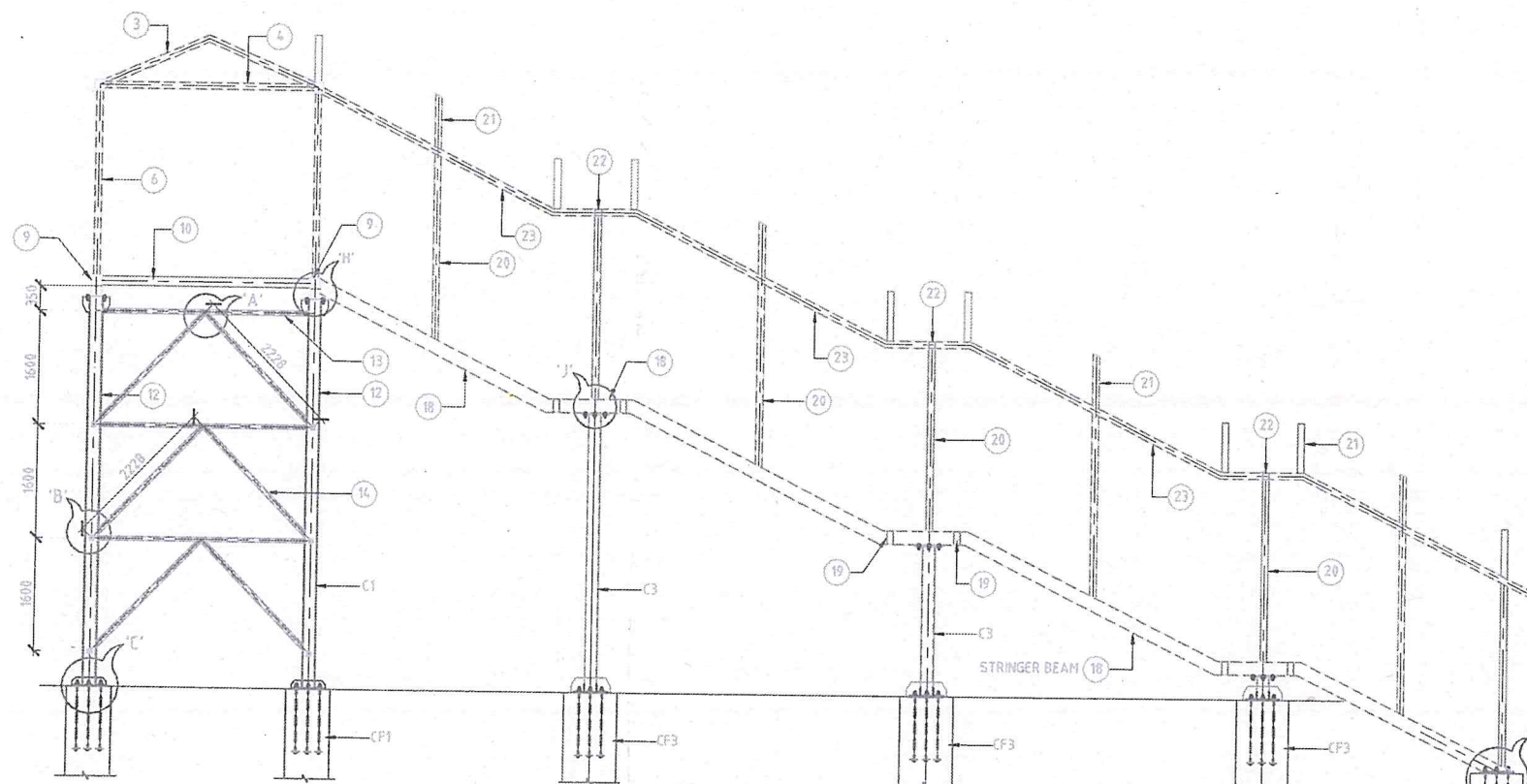
**ELEVATION
DETAIL-P**
(SCALE 1:15)

N.Raja
N.Raja, HME cum RE
M/s. SA INFRA-QUEST
Independent Engineer of NH-79 & NH-32

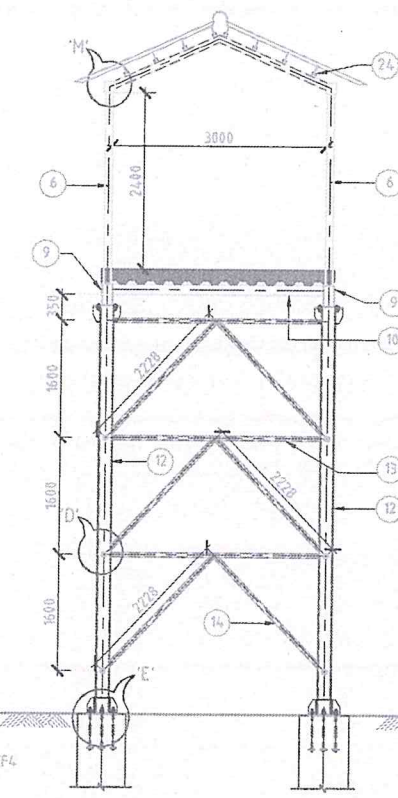
Team Leader
Team Leader
M/s. SA INFRA - QUEST
Independent Engineer of NH-79 & NH-32

Asst. HME
Asst. HME
SA - Quest

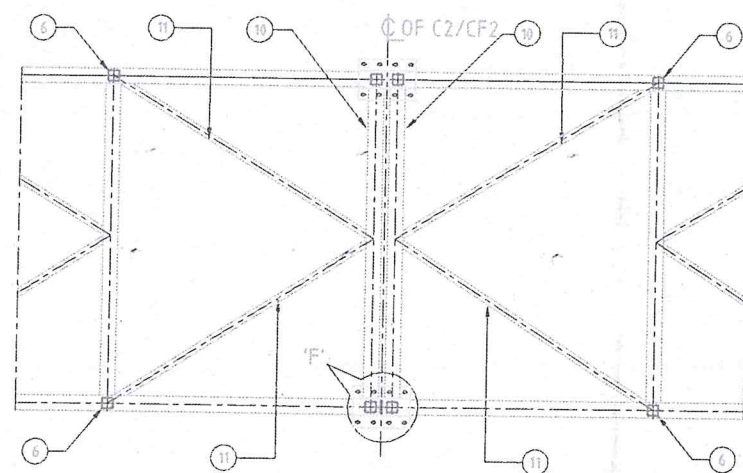
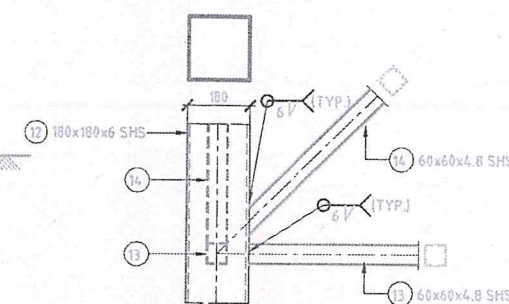
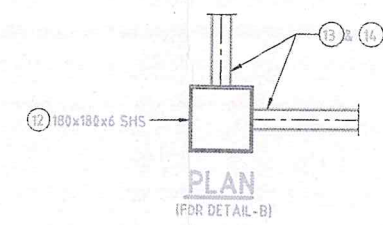
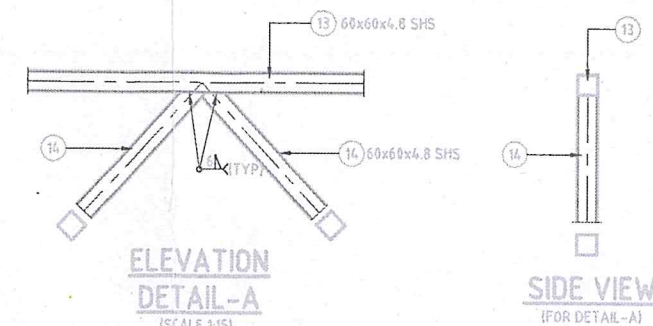
<p>CLIENT:</p>  <p>NATIONAL HIGHWAY AUTHORITY OF INDIA G-5 & G-6 DWARAKA NEW DELHI</p>	<p>CONCESSIONAIRE:</p> <p>SU TOLL ROAD PRIVATE LTD</p> <p>REGD OFF: H BLOCK, 1ST FLOOR, DHIRAU BHAI, AMBANI KNOWLEDGE CITY, NEVI MIMBAI - 400710.</p>	<p>INDEPENDANT ENGINEER:</p> <p>SA INFRASTRUCTURE CONSULTANT PVT. LTD IN ASSOCIATION WITH QUEST ENGINEERS & CONSULTANTS PVT LTD. 1101B: 11 Floor, Tower A-II, Ansal Corporate Park, Plot No:7A/I, Sector-142, Noida - 201 301, India</p>	<p>PROJECT:</p> <p>4/6 LANING OF PONDICHERRY - TINDIVANAM SECTION FROM KM 0+000 TO KM 38+620 OF NH-32</p> <p>BAR SCALE : 0 1 2 3 4 5 6 7 8 9 10 0 2 4 6 8 10 12 14 16 18 20 1:100 1:50</p>	<p>FOB - Rafter & Detail Drg.</p> <p>TITLE:- FOB at Km. 16+550</p>	<p>APPROVED BY :</p>	<p>Drawing No: SUTRPL/NH-79/FOB/10</p>
--	--	--	--	---	----------------------	--



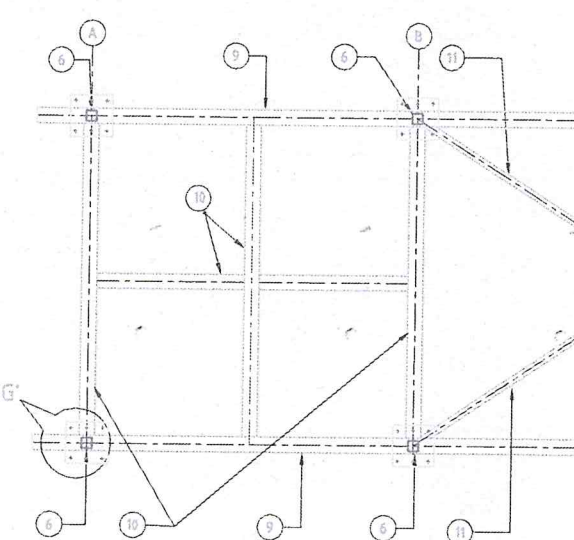
ELEVATION OF STRINGER BEAM & COLUMN
(SCALE 1:75)



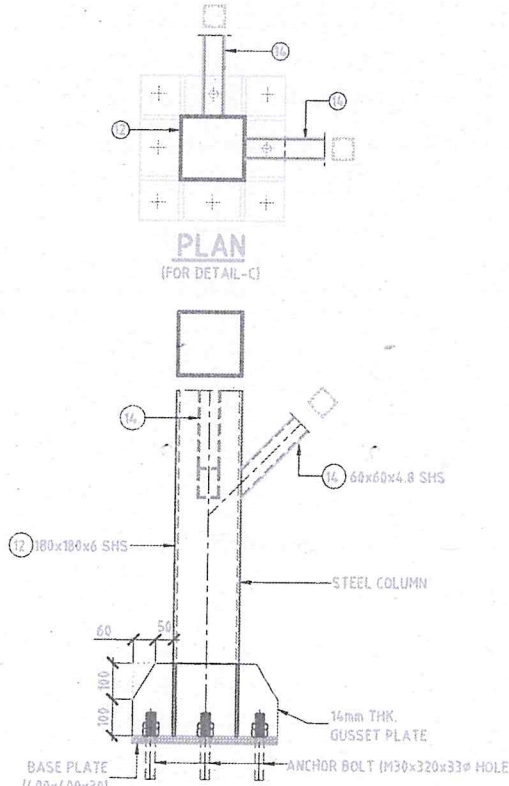
DETAIL AT COLUMN-C2
(SCALE 1:75)



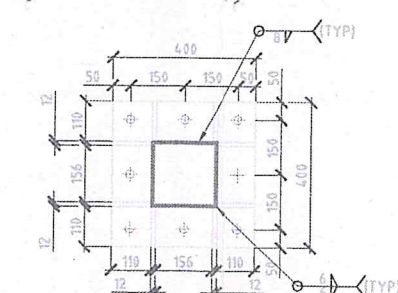
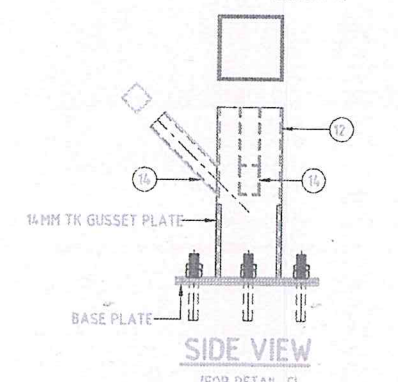
PLAN OF BOTTOM TRUSS ABOVE C2/CF2
(SCALE 1:50)



PLAN OF BOTTOM TRUSS ABOVE C1/CF1
(SCALE 1:50)



ELEVATION DETAIL-C
(SCALE 1:15)



DETAIL OF BASE PLATE
(FOR DETAIL-C)

NOTES:

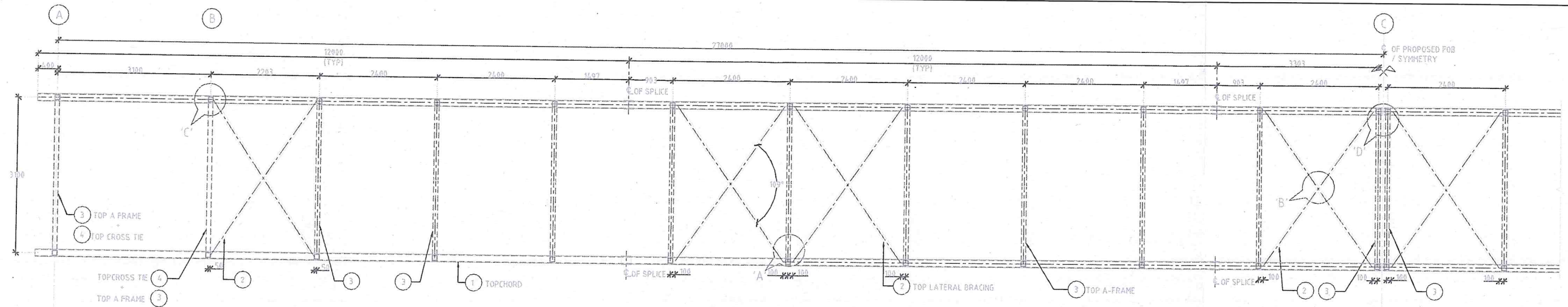
1. ALL DIMENSIONS ARE IN mm AND LEVELS ARE IN METERS.
2. ONLY WRITTEN DIMENSIONS SHALL BE FOLLOWED.
3. THE CUT LENGTH, SHAPE AND SIZE OF THE MEMBER AND GUSSET PLATE ARE TO BE VERIFIED BY FULL SCALE LAYOUT AT FABRICATION YARD.
4. ALL WELDS ARE 8mm FILLET WELD UNLESS OTHERWISE SPECIFIED.
5. BOLTED CONNECTION OF STRUCTURAL JOINT USING HIGH STRENGTH BEARING TYPE AND FRICTION GRIP TYPE BOLTS SHALL COMPLY WITH REQUIREMENT OF IS:4000.
6. IN MAKING SITE JOINTS BOLTS SHOULD BE DIPPED IN THICK RED LEAD PAINT BEFORE INSERTION IN THE HOLES.
7. NECESSARY JIGS AND FIXTURES SHOULD BE USED FOR WELDING VARIOUS MEMBERS OF FOOT-OVER-BRIDGE TO AVOID DISTORTION AS PER SPECIFICATION IS:9595.
8. ALL OPEN ENDS OF HOLLOW SECTIONS AFTER FABRICATION, IF ANY, SHOULD BE SEALED TO PREVENT CORROSION OF INTERNAL SURFACES BY WELDING A 6mm THK PLATE.
9. ALL STRUCTURAL STEEL SECTIONS SHALL BE HOT ROLLED SECTION (HRS) AND COMPLY WITH FOLLOWING REQUIREMENT.
i) SHS & RHS - GRADE YS# 310 CONFORMING TO IS 4923:1997
10. FABRICATION AND ERECTION SHALL BE FOLLOWED AS PER IS:800:1984.
11. PAINTING OF ALL STRUCTURAL STEEL SHALL CONFORM TO IS: 5905-1989 AS MENTIONED IN GENERAL NOTES.
12. ALL STRUCTURAL STEEL MEMBERS SHOULD BE TREATED WITH PRIMER AND ANTI-CORROSIVE PAINTS/COATING AS PER APPLICABLE SPECIFICATION.
13. IN ACCORDANCE WITH CLAUSE 6.2.2 OF IS:816:1969, THE SIZE OF FILLET WELD SHALL NOT BE LESS THAN 3mm

Asst. HME
SA - Quest

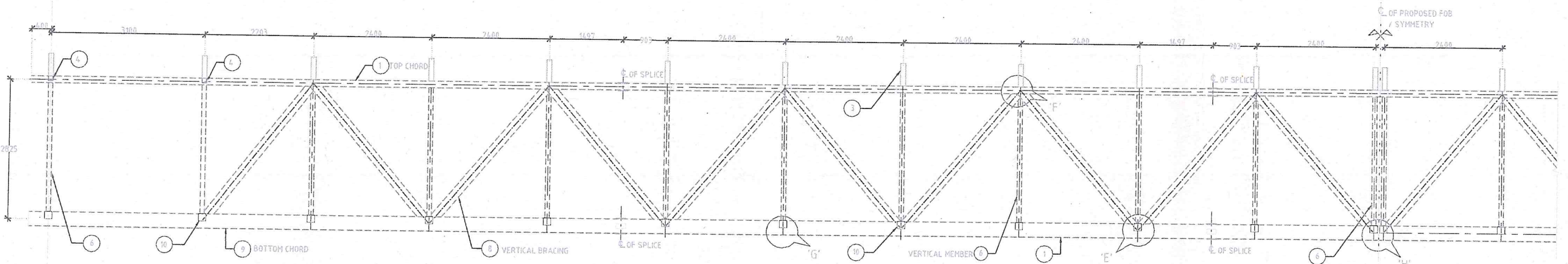
N. Raja, HME cum RL
M/s. SA INFRA-QUEST
Independent Engineer of NH-79 & NH-3.

Team Leader
M/s. SA INFRA - QUEST

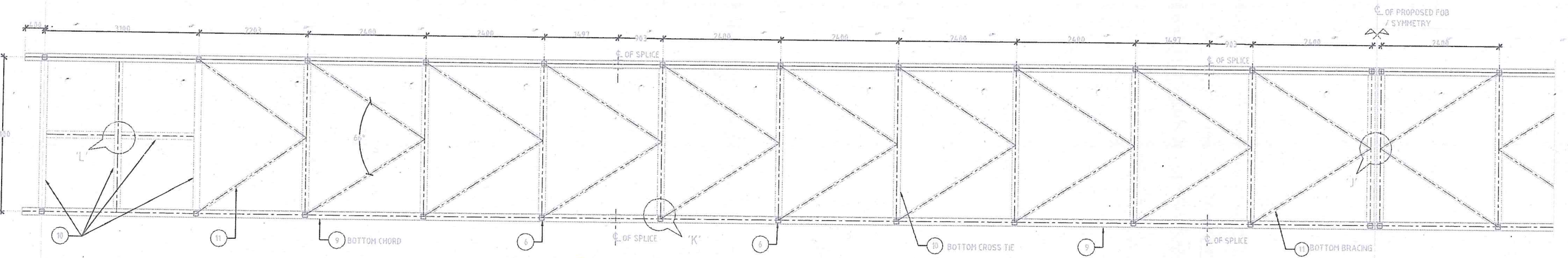
<p>CLIENT:</p> <p>NATIONAL HIGHWAY AUTHORITY OF INDIA G-5 & G-6 DWARAKA NEW DELHI</p>	<p>CONCESSIONAIRE:</p> <p>SU TOLL ROAD PRIVATE LTD</p> <p>REGD OFF: H BLOCK, 1ST FLOOR, DHIRABHAI, AMBANI KNOWLEDGE CITY, NEVI MIMBAI - 400710.</p>	<p>INDEPENDANT ENGINEER:</p> <p>SA INFRASTRUCTURE CONSULTANT PVT. LTD IN ASSOCIATION WITH QUEST ENGINEERS & CONSULTANTS PVT LTD. 1101B: 11Floor, Tower A-II, Ansal Corporate Park, Plot No:7A/1, Sector-142, Noida - 201 301, India</p>	<p>PROJECT:</p> <p>4/6 LANING OF PONDICHERRY - TINDIVANAM SECTION FROM KM 0+000 TO KM 38+620 OF NH-32</p> <p>BAR SCALE : 0 1 2 3 4 5 6 7 8 9 10 -1:100 0 2 4 6 8 10 12 14 16 18 20 -1:50</p>	<p>FOB - Elevation of Stringer Beam</p> <p>TITLE:- FOB at Km. 16+550</p>	<p>Drawing No: SUTRPL/NH-79/FOB/07</p>
--	--	---	---	--	---



PLAN OF TOP TRUSS
(SCALE 1:75)



ELEVATION OF TRUSS
(SCALE 1:75)




PLAN OF BOTTOM TRUSS
(CAP PLATE ARE NOT SHOWN CLARITY)
(SCALE 1:75)

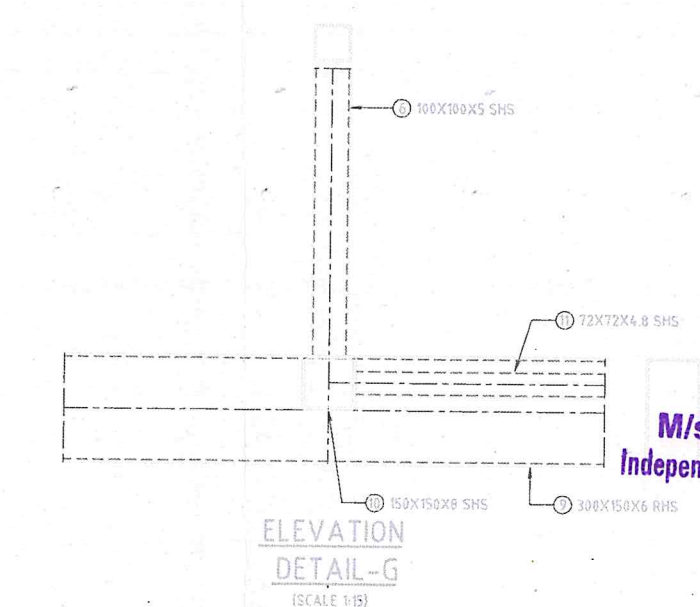
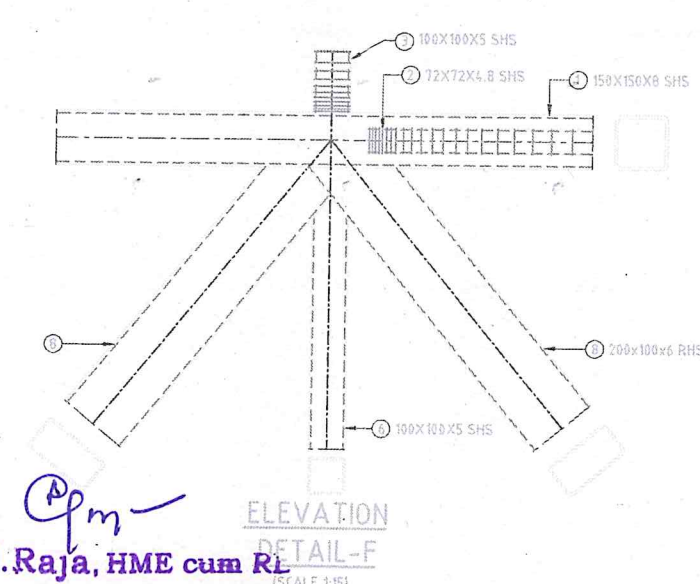
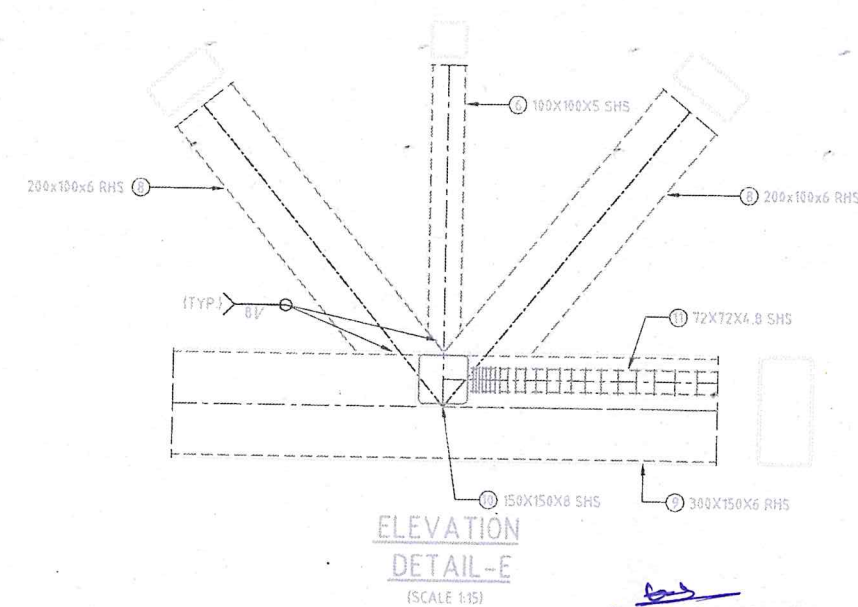
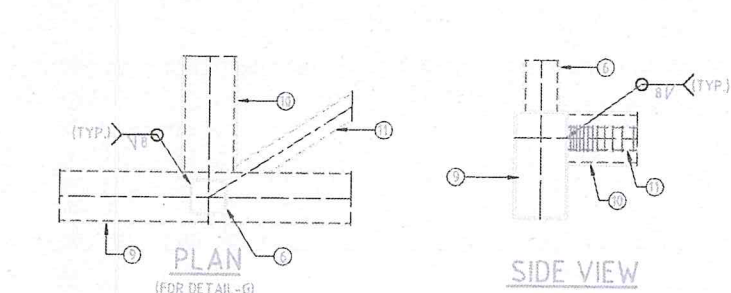
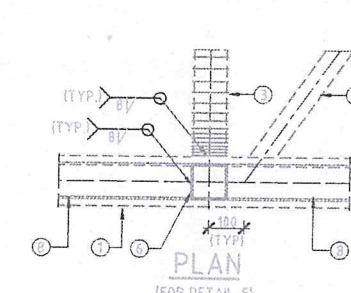
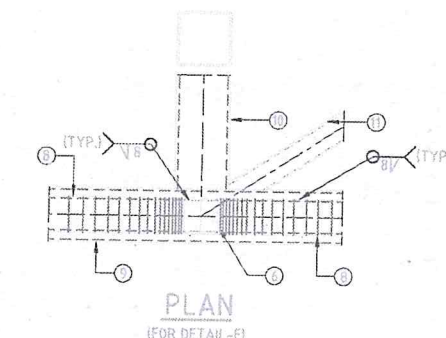
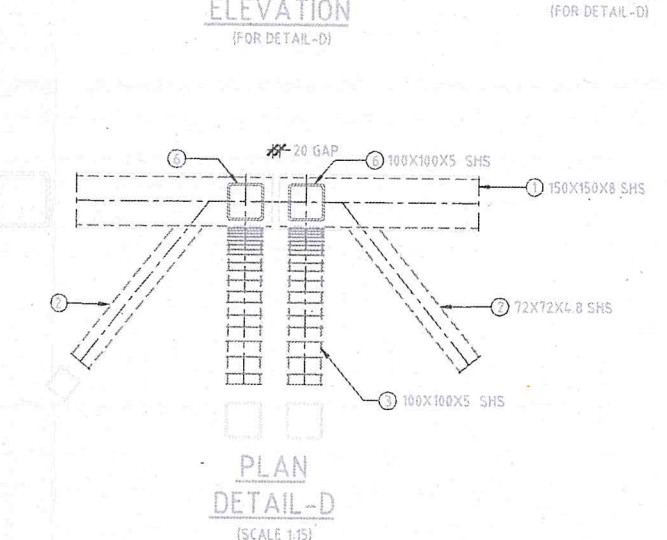
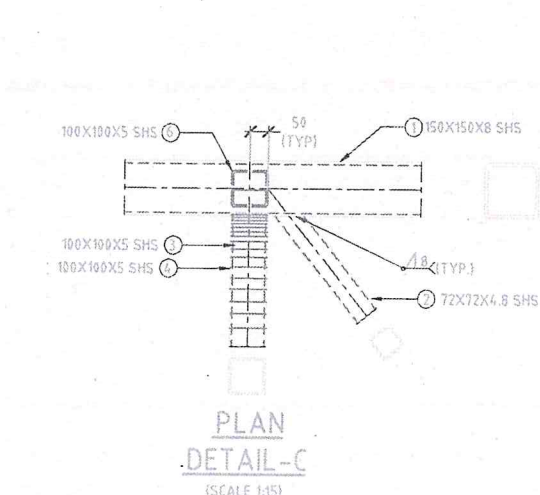
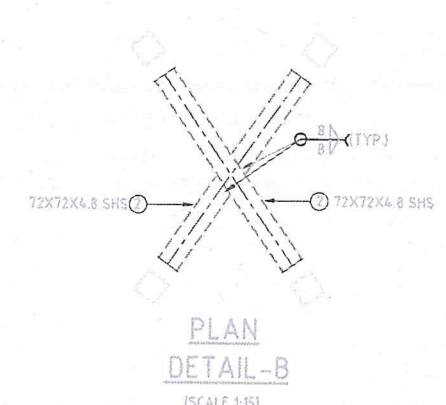
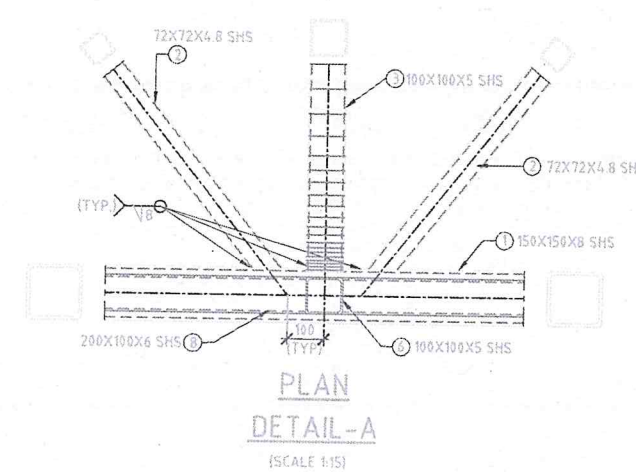
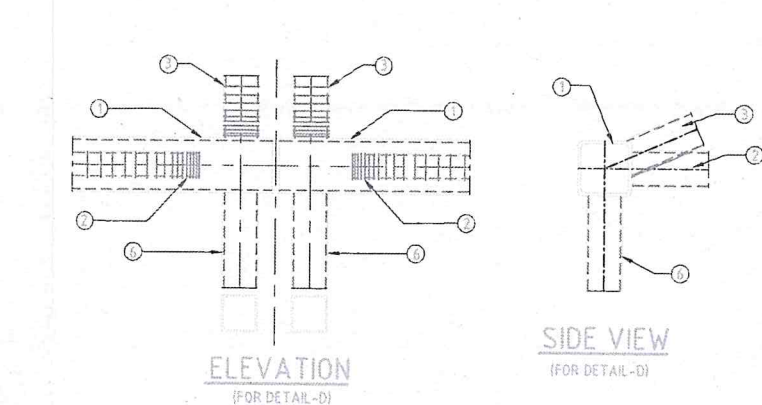
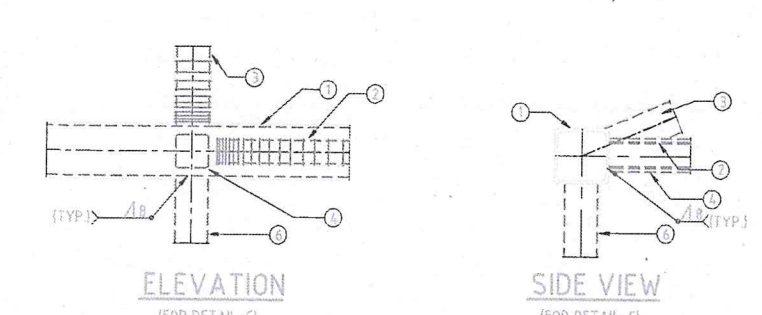
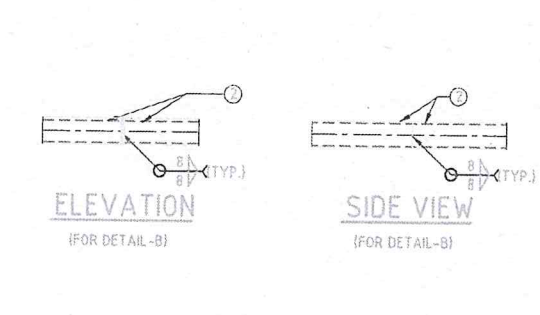
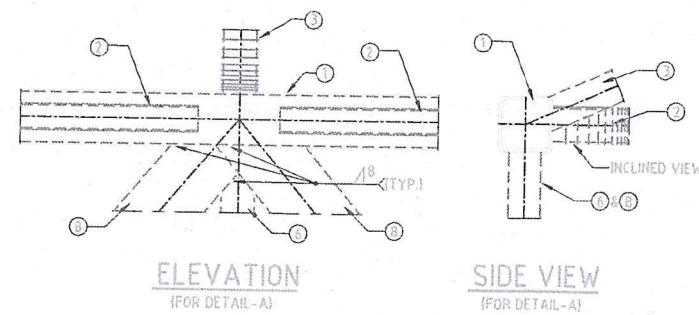
Asst. HME
SA - Quest

N. Raja, HME cum RE
M/s. SA INFRA-QUEST
Independent Engineer of NH-79 & NH-32

Team Leader
M/s. SA INFRA - QUEST
Independent Engineer of NH-79 & NH-32

Note:-
1. REFER DWG. NO -DD 005

<p>CLIENT:</p>  <p>NATIONAL HIGHWAY AUTHORITY OF INDIA G-5 & G-6 DWARAKA NEW DELHI</p>	<p>CONCESSIONAIRE:</p> <p>SU TOLL ROAD PRIVATE LTD</p> <p>REGD OFF: H BLOCK, 1ST FLOOR, DHIRABHAI, AMBANI KNOWLEDGE CITY, NEVI MUMBAI - 400710.</p>	<p>INDEPENDANT ENGINEER:</p> <p>SA INFRASTRUCTURE CONSULTANT PVT. LTD IN ASSOCIATION WITH QUEST ENGINEERS & CONSULTANTS PVT LTD. 1101B: 11 Floor, Tower A-II, Ansal Corporate Park, Plot No:7A/1, Sector-142, Noida - 201 301, India</p>	<p>PROJECT:</p> <p>4/6 LANING OF PONDICHERRY - TINDIVANAM SECTION FROM KM 0+000 TO KM 38+620 OF NH-32</p> <p>BAR SCALE : 0 1 2 3 4 5 6 7 8 9 10 -1:100 0 2 4 6 8 10 12 14 16 18 20 -1:50</p>	<p>FOB - Details of Struss drg.</p> <p>TITLE:- FOB at Km. 16+550</p>	<p>APPROVED BY :</p>	<p>Drawing No: SUTRPL/NH-79/FOB/11</p>
---	---	--	--	--	----------------------	--

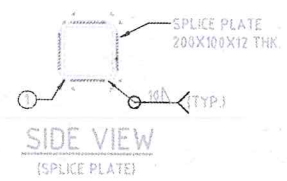
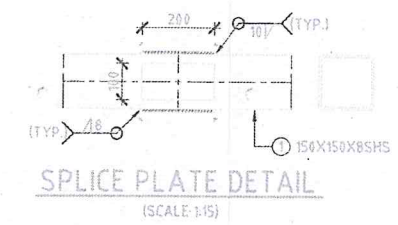
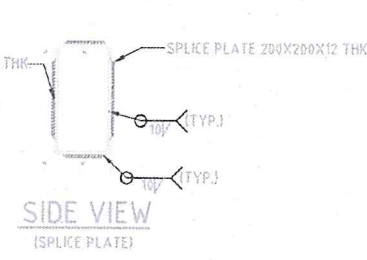
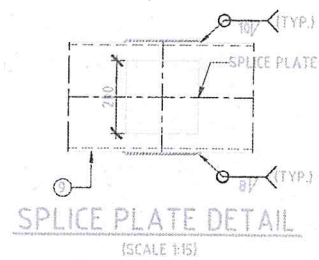
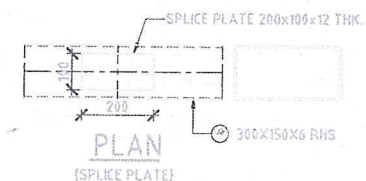
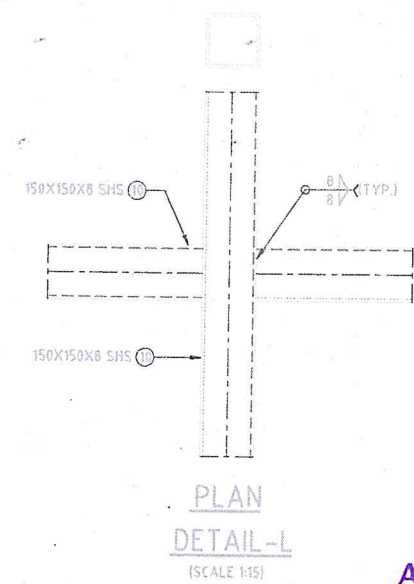
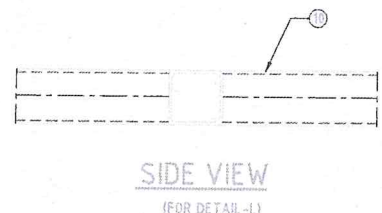
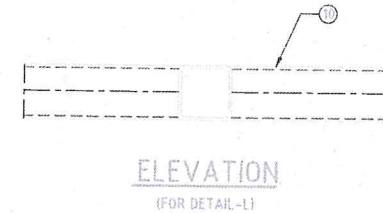
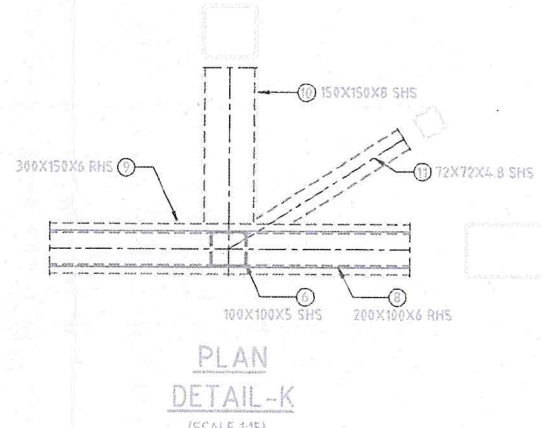
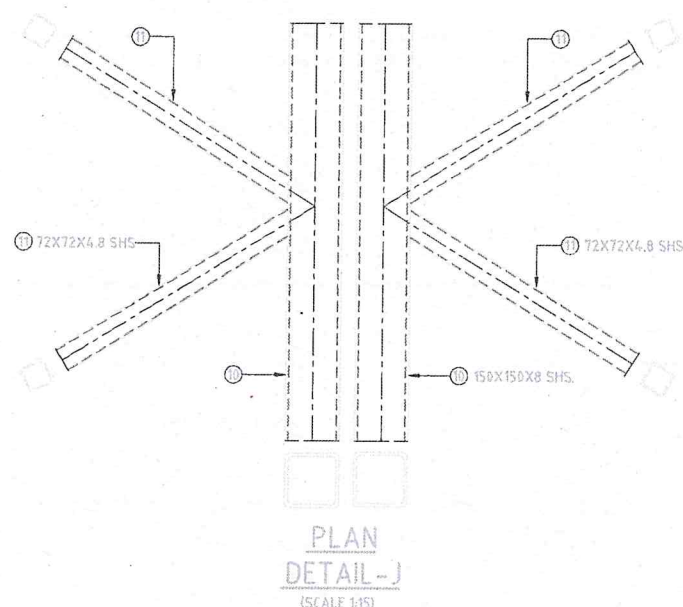
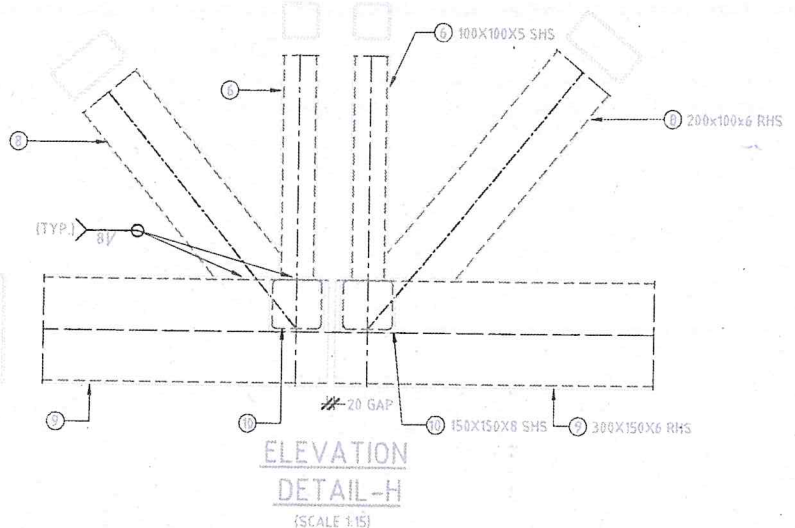
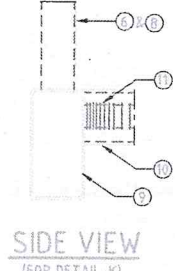
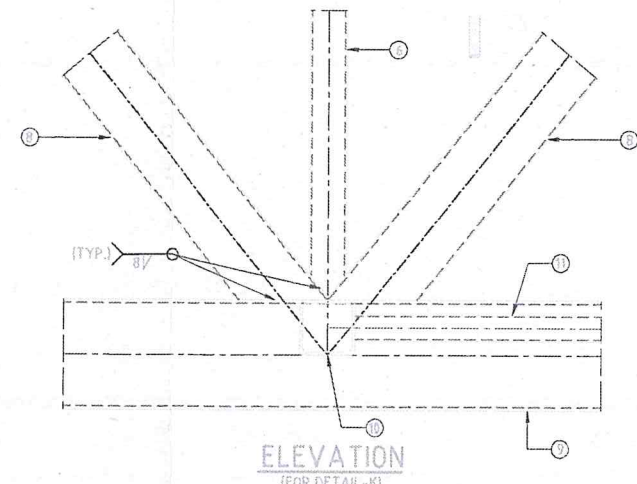
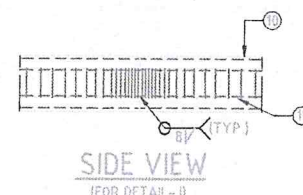
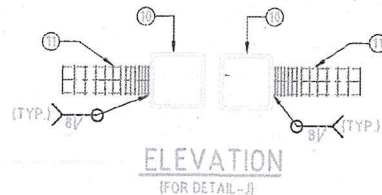
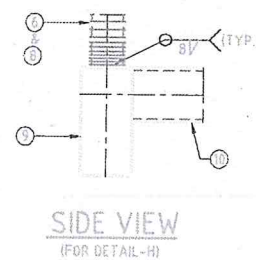
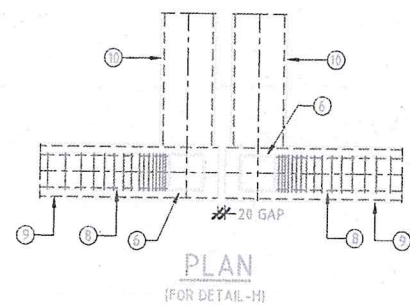


Asst. HME

N. Raja, HME cum RL
M/s. SA INFRA-QUEST
Independent Engineer of NH-79 & NH-32

Team Leader
M/s. SA INFRA-QUEST
Independent Engineer of NH-79 & NH-32

CLIENT: NATIONAL HIGHWAY AUTHORITY OF INDIA G-5 & G-6 DWARAKA NEW DELHI	CONCESSIONARY: SA - Ques' SU TOLL ROAD PRIVATE LTD REGD OFF: H BLOCK, 1ST FLOOR, DHIRAOBHAI, AMBANI KNOWLEDGE CITY, NEVI MIMBAI - 400710.	INDEPENDANT ENGINEER: SA INFRASTRUCTURE CONSULTANT PVT. LTD IN ASSOCIATION WITH QUEST ENGINEERS & CONSULTANTS PVT LTD. 1101B: 11Floor, Tower A-II, Ansal Corporate Park, Plot No:7A/1, Sector-142, Noida - 201 301, India	PROJECT: 4/6 LANING OF PONDICHERRY - TINDIVANAM SECTION FROM KM 0+000 TO KM 38+620 OF NH-32 BAR SCALE : 0 1 2 3 4 5 6 7 8 9 10 1:100 0 2 4 6 8 10 12 14 16 18 20 1:50	FOB - Details of Strusses TITLE:- FOB at Km. 16+550	APPROVED BY :	Drawing No: SUTRPL/NH-79/FOB/12
--	--	--	---	--	----------------------	--



FOR TOP CHORD

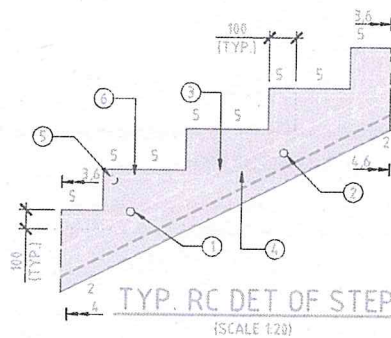
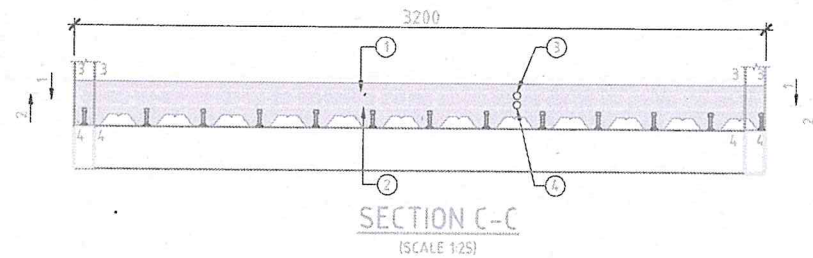
FOR BOTTOM CHORD

Asst. HME
SA - Quest

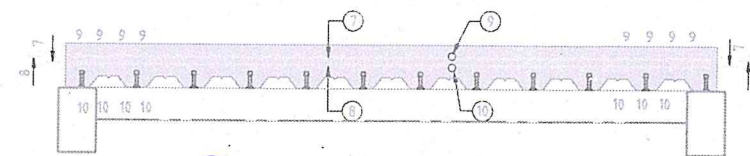
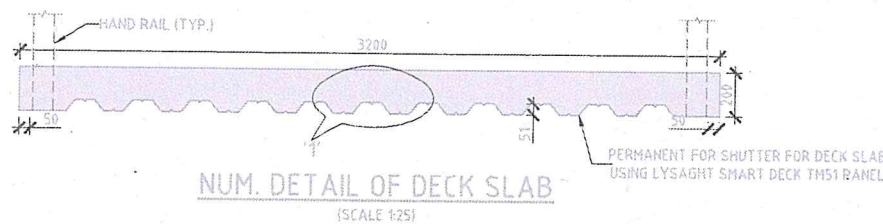
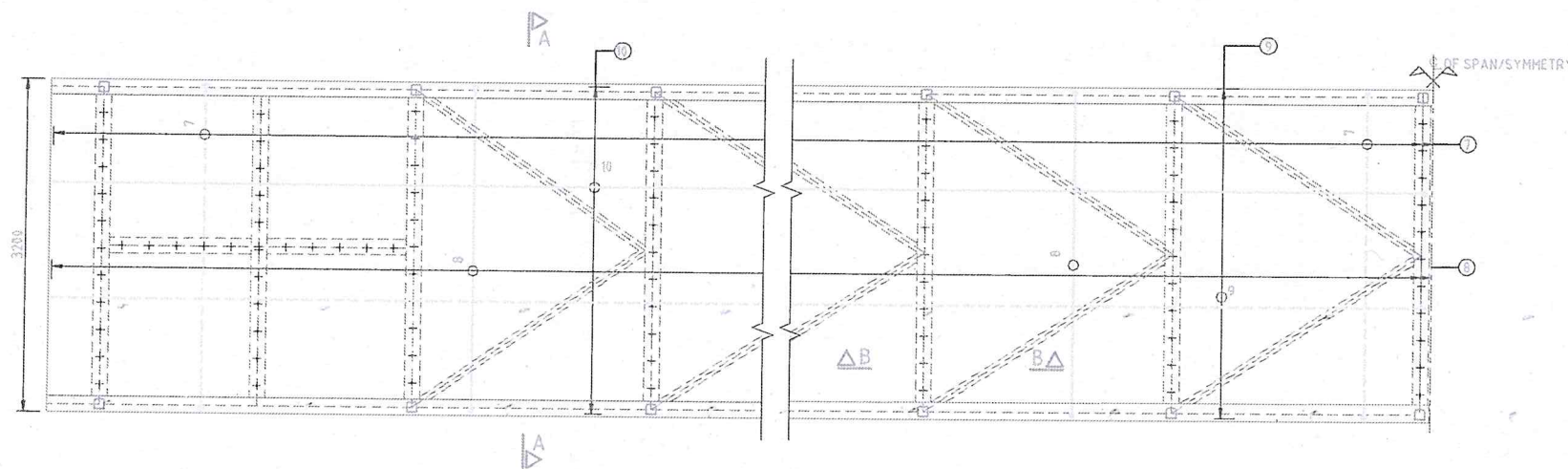
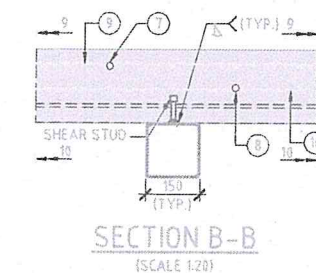
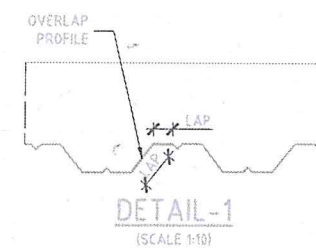
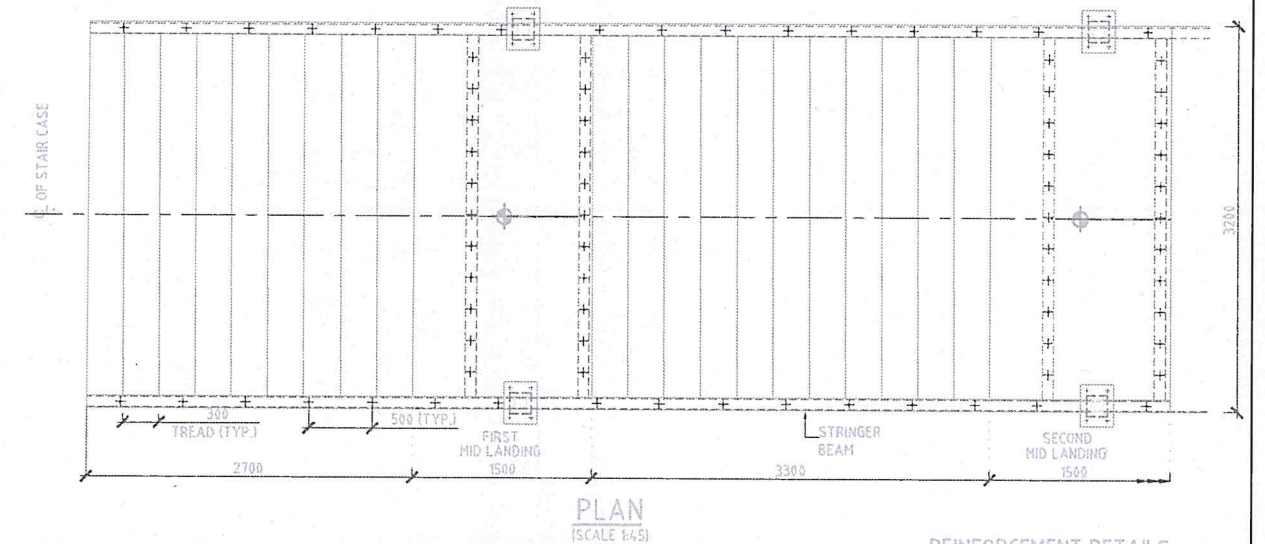
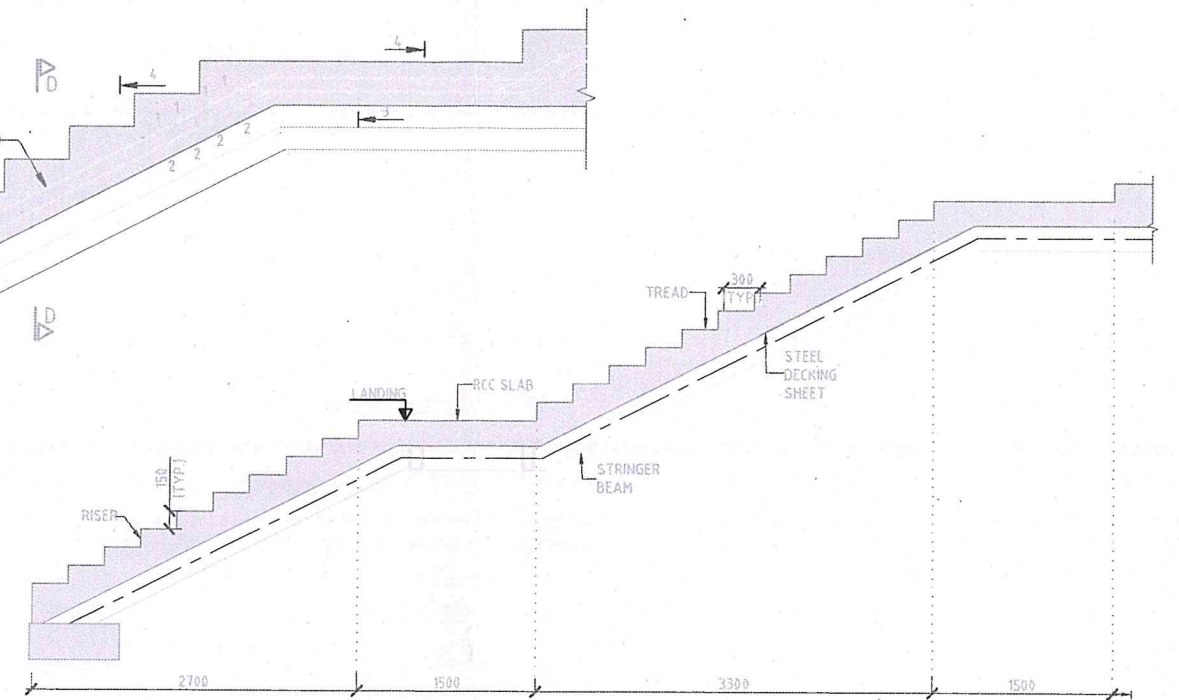
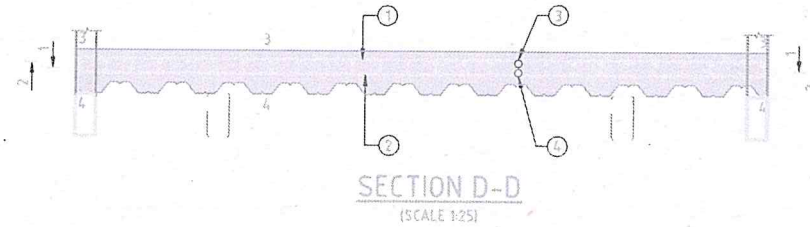
N. Raja, HME cum RE
M/s. SA INFRA-QUEST
Independent Engineer of NH-79 & NH-32

Team Leader
M/s. SA INFRA - QUEST
Independent Engineer of NH-79 & NH-32

<p>CLIENT:</p> <p>NATIONAL HIGHWAY AUTHORITY OF INDIA G-5 & G-6 DWARAKA NEW DELHI</p>	<p>CONCESSIONAIRE:</p> <p>SU TOLL ROAD PRIVATE LTD</p> <p>REGD OFF: H BLOCK, 1ST FLOOR, DHIRAU BHAI, AMBANI KNOWLEDGE CITY, NEVI MIMBAI - 400710.</p>	<p>INDEPENDANT ENGINEER:</p> <p>SA INFRASTRUCTURE CONSULTANT PVT. LTD IN ASSOCIATION WITH QUEST ENGINEERS & CONSULTANTS PVT LTD, 1101B: 11Floor, Tower A-II, Ansal Corporate Park, Plot No: 7A/I, Sector-142, Noida - 201 301, India</p>	<p>PROJECT:</p> <p>4/6 LANING OF PONDICHERRY - TINDIVANAM SECTION FROM KM 0+000 TO KM 38+620 OF NH-32</p> <p>BAR SCALE : 0 1 2 3 4 5 6 7 8 9 10 11 12 13 14 15 16 17 18 19 20 1:100 0 2 4 6 8 10 12 14 16 18 20 1:50</p>	<p>FOB - Details of Strusses</p> <p>TITLE:- FOB at Km. 3+150</p>	<p>APPROVED BY :</p>	<p>Drawing No: SUTRPL/NH-79/FOB/13</p>
---	---	--	--	--	----------------------	--



REINFORCEMENT DETAIL OF STAIRCASE
(SCALE 1:25)



REINFORCEMENT DETAILS:

BAR MARK	TYPE & DIA	SHAPE OF BARS
1	Y10 AT 100	
2	Y10 AT 100	
3	Y10 AT 100	
4	Y10 AT 100	
5	Y10	
6	Y10	
7	Y10 AT 100	
8	Y10 AT 100	
9	Y10 AT 100	
10	Y10 AT 100	

NOTES:

- ALL DIMENSIONS ARE IN MM AND LEVELS ARE IN METERS.
- GRADE OF CONCRETE SHALL BE AS BELOW
 - RCC STAIRCASE, DECK SLAB - M30.
 - PCC LEVELING COURSE - M15.
- Y-DENOTES HIGH YIELD STRENGTH DEFORMED BARS OF GRADE Fe 550 HAVING YIELD STRENGTH NOT LESS THAN 550 N/mm² CONFORMING TO IS : 1786 : 2008.
- COVER OF REINFORCEMENT FOR DECK SLAB, STAIRCASE - 25mm.

Team Leader
M/s. SA INFRA - QUEST
Independent Engineer of NH-79 & NH-32

CLIENT:

NATIONAL HIGHWAY AUTHORITY OF INDIA
G-5 & G-6 DWARAKA
NEW DELHI

CONCESSIONAIRE:
SU TOLL ROAD PRIVATE LTD
REGD OFF: H BLOCK, 1ST FLOOR,
DHIRAU BHAI, AMBANI KNOWLEDGE CITY,
NEVI MIMBAI - 400710.

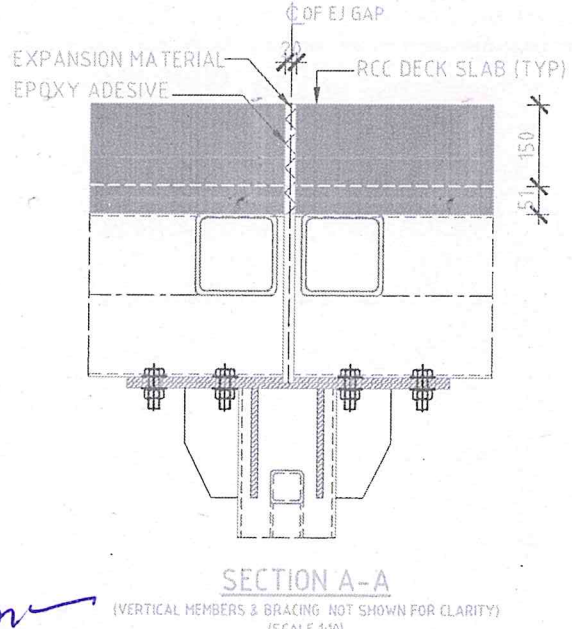
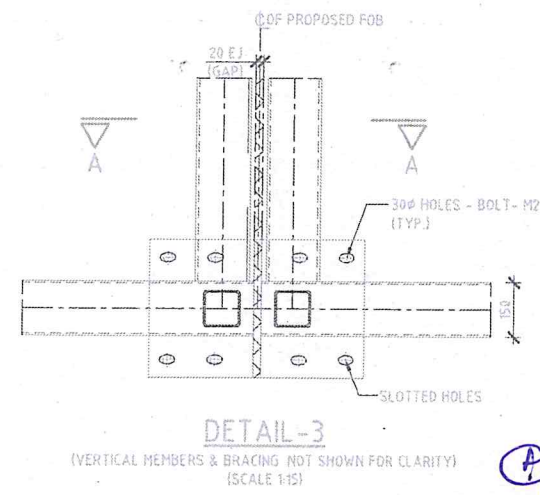
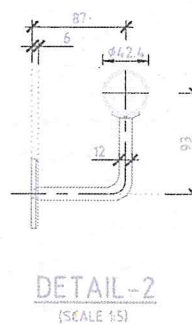
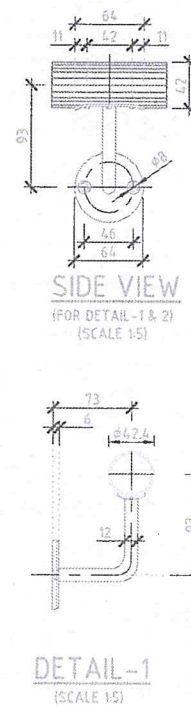
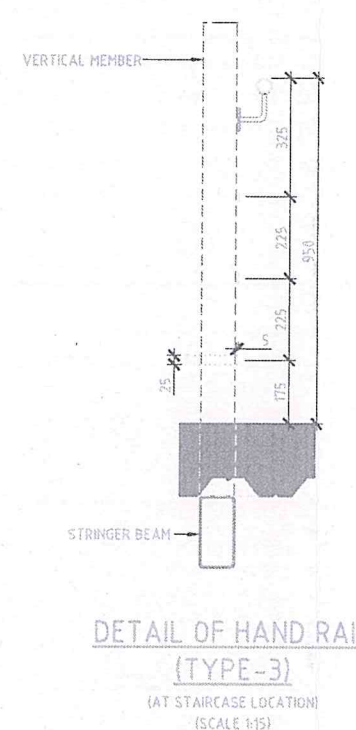
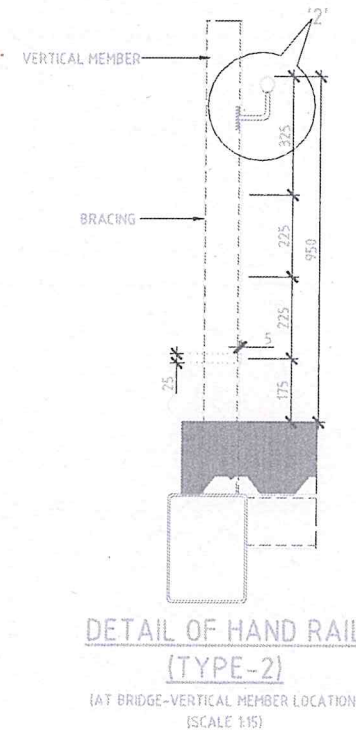
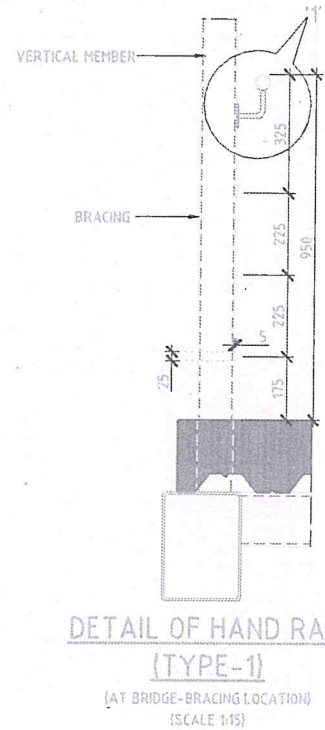
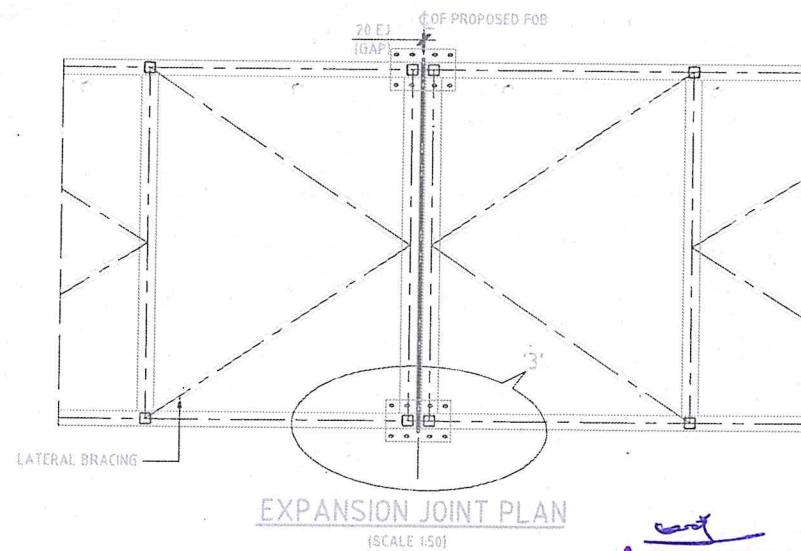
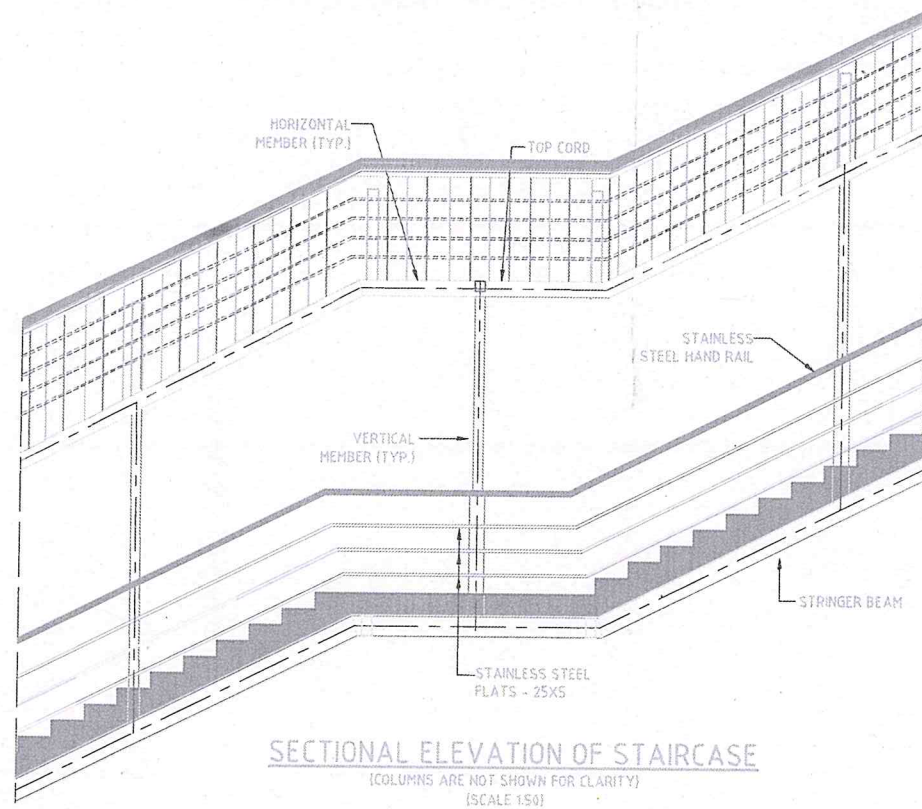
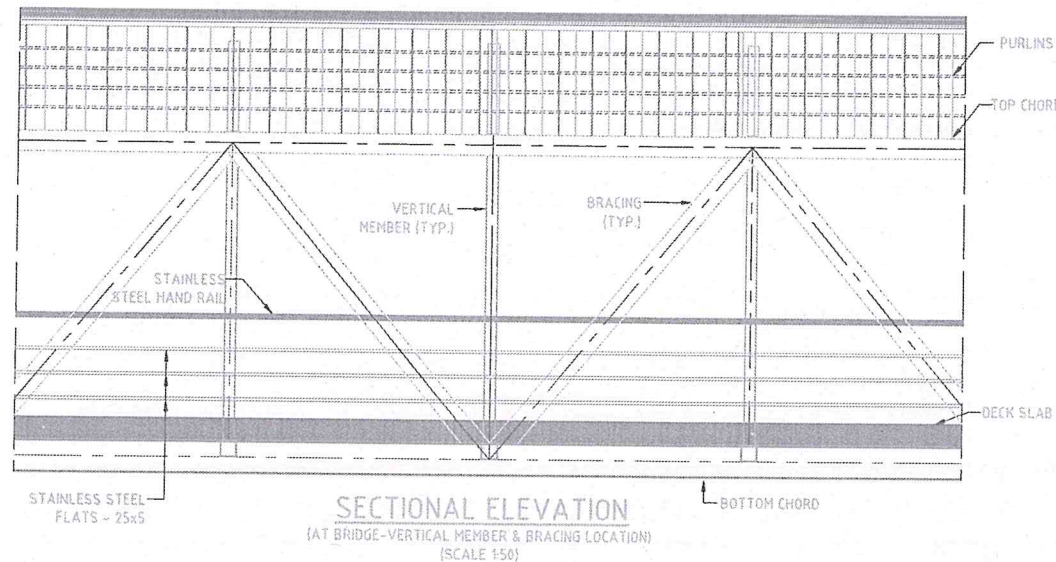
INDEPENDANT ENGINEER:
SA INFRASTRUCTURE CONSULTANT PVT. LTD
IN ASSOCIATION WITH
QUEST ENGINEERS & CONSULTANTS PVT. LTD.
1101B: 11Floor, Tower A-II, Ansal Corporate Park,
Plot No:7A/1, Sector-142,
Noida- 201 301, India

PROJECT:
4/6 LANING OF PONDICHERRY - TINDIVANAM SECTION FROM KM
0+000 TO KM 38+620 OF NH-32
BAR SCALE : 0 1 2 3 4 5 6 7 8 9 10 -1:100
0 2 4 6 8 10 12 14 16 18 20 -1:50


FOB - Numeration & RFT Details
Of Deck Slab / Staircase
TITLE:- FOB at Km. 16+550

APPROVED BY :

Drawing No: SUTRPL/NH-79/FOB/14



Team Leader
M/s. SA INFRA - QUEST
Independent Engineer of NH-79 & NH-32

<p>CLIENT:</p>  <p>NATIONAL HIGHWAY AUTHORITY OF INDIA G-5 & G-6 DWARAKA NEW DELHI</p>	<p>CONCESSIONAIRE:</p> <p>SU TOLL ROAD PRIVATE LTD</p> <p>REGD OFF: H BLOCK, 1ST FLOOR, DHIRAOBHAI, AMBANI KNOWLEDGE CITY, NEVI MIMBAI - 400710.</p>	<p>INDEPENDANT ENGINEER:</p> <p>SA INFRASTRUCTURE CONSULTANT PVT. LTD IN ASSOCIATION WITH QUEST ENGINEERS & CONSULTANTS PVT LTD, 1101B: 11Floor, Tower A-II, Ansal Corporate Park, Plot No:7A/1, Sector-142, Noida - 201 301, India</p>	<p>PROJECT:</p> <p>4/6 LANING OF NH-79 & NH-32 0+000 TO KM 38+620 OF NH-32</p> <p>BAR SCALE : 0 1 2 3 4 5 6 7 8 9 10 0 2 4 6 8 10 12 14 16 18 20 1:100 1:50</p>	<p>FOB - Hand Rail Detail drawing</p> <p>TITLE:- FOB at Km. 16+550</p>	<p>APPROVED BY :</p>	<p>Drawing No: SUTRPL/NH-79/FOB/15</p>
---	--	---	---	--	----------------------	--

